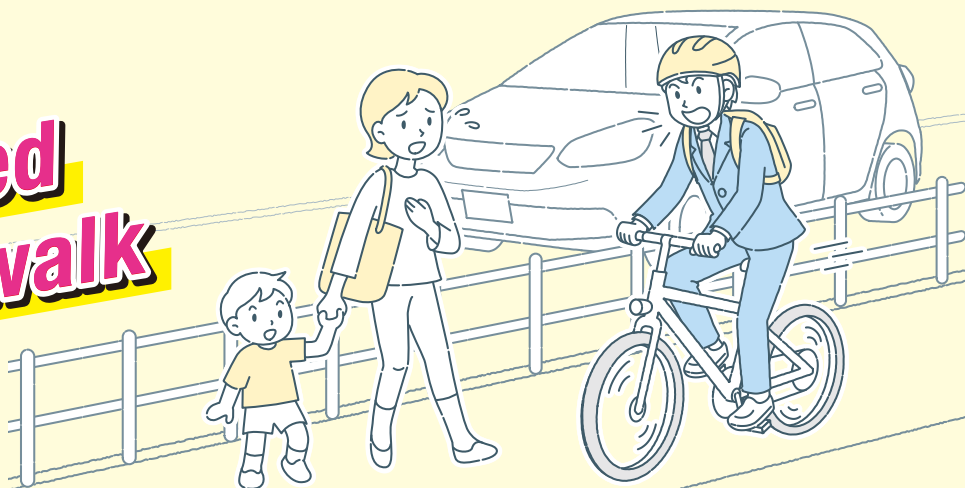
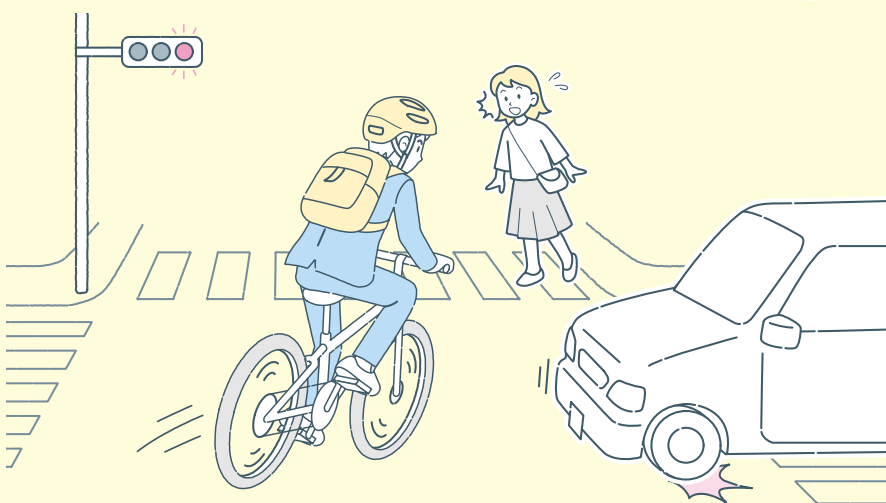


Have you ever seen these things happen? Do these riding habits apply to you?

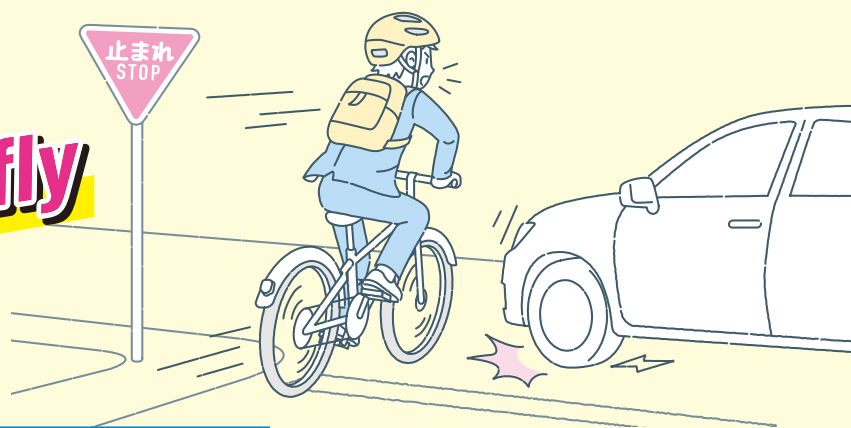
**Riding at
a high speed
on a sidewalk**



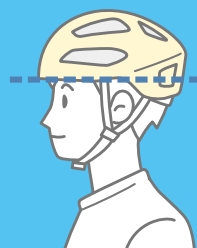
**Crossing
an intersection
diagonally**



**Neglecting
to stop briefly**



Wear your helmet in the correct manner too



① Correct angle for wearing a helmet

In order for a helmet to perform its intended function, it must be worn at the correct angle.



② Evenness left and right

Adjust the angle so that the helmet rim will sit just above your eyebrows (make sure your forehead is not exposed). Also check that it is not tilted to the right or left.



③ Adjustment of the chin strap

Adjust the length of the chin strap with only enough room for one or two fingers between the chin and the strap. Fasten the buckle firmly.



④ Final check

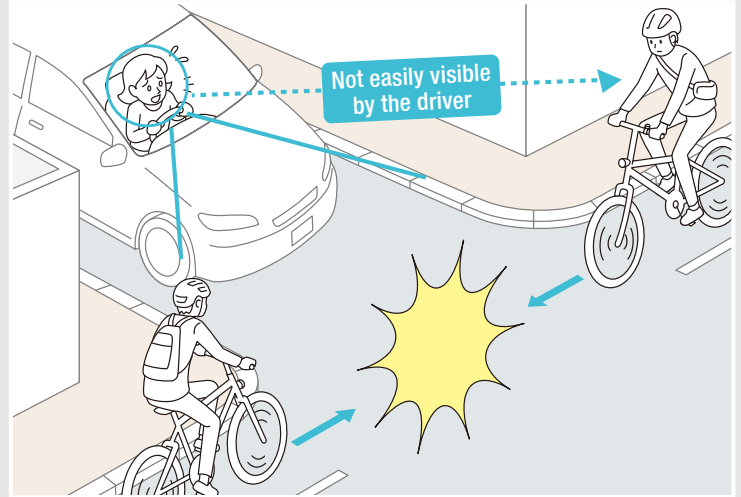
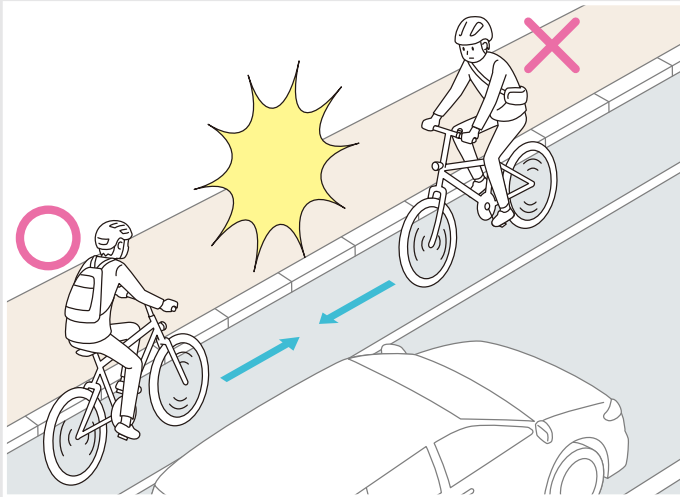
Make sure that the strap is not loose or twisted around the ears.



Ride on the left-hand side of a road

As a general rule, you must ride a bicycle on the left-hand side of a road. Riding on the right-hand side of a road creates the risk of colliding with an approaching car head-on.

Riding on the right-hand side of a road may not be noticed in time by a driver, making it much more likely that you will be involved in a traffic accident.

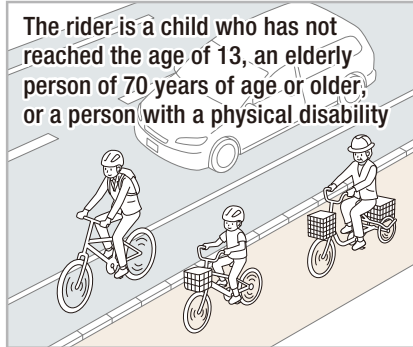


Riding on a sidewalk is permitted in the following exceptional cases.

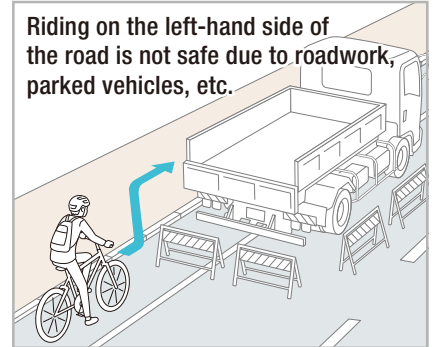
There is a road sign or marking to that effect



The rider is a child who has not reached the age of 13, an elderly person of 70 years of age or older, or a person with a physical disability



Riding on the left-hand side of the road is not safe due to roadwork, parked vehicles, etc.



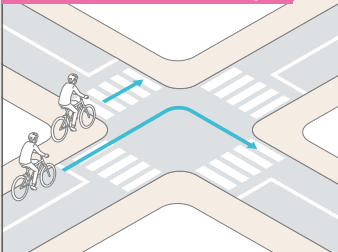
How to cross an intersection

When riding on a road, obey traffic lights for cars, and when riding on a sidewalk, obey traffic lights for pedestrians.

If there is a bicycle crossing lane, bicyclists on the road must ride in that crossing lane.

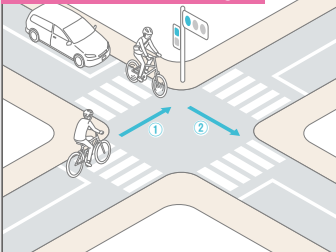
When turning right at an intersection

Intersection without traffic lights



Cross to the other side while riding on the left-hand side of the road, and then turn to the right after ensuring safety.

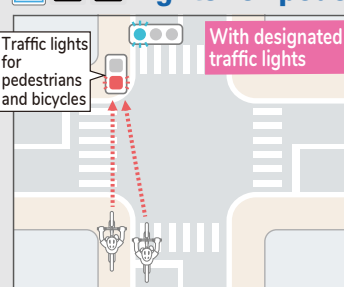
Intersection with traffic lights



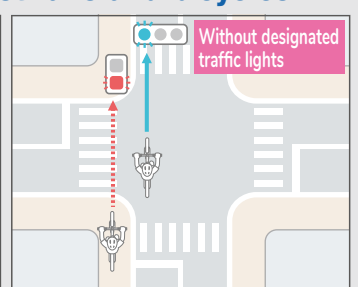
Cross to the other side at the first traffic light, and cross once again at the second traffic light. (Two-stage right turn)



Intersection with designated traffic lights for pedestrians and bicycles



Obey designated traffic lights for pedestrians and bicycles, regardless of whether on the sidewalk or road.



Those on the sidewalk must obey traffic lights for pedestrians and those on the road must obey traffic lights for cars.

In Kumamoto City, like other cities, many traffic accidents occur at intersections. Pay close attention to nearby pedestrians and cars and take care to ensure safety while riding.

The police are strengthening their enforcement efforts in bicycle traffic instruction and patrol!

Five rules for safe bicycle riding

- 1 As a general rule, ride on the left-hand side. Sidewalks are for exceptional cases. Priority must be given to pedestrians.
- 2 Obey traffic lights and stop as required at intersections, and check for safety.
- 3 Make sure to keep your bicycle light on at night.
- 4 Do not drink and ride.
- 5 Wear a helmet.

Issuer: Kumamoto City, Urban Development and Construction Bureau, Traffic Policy Department, Bicycle Use Promotion Division

TEL 096-328-2259 e-mail : jitenshariyou@city.kumamoto.lg.jp

Editorial supervisor: Kumamoto Prefectural Police Headquarters, Traffic Department, Traffic Planning Division

Collaborators: Kumamoto Prefectural Board of Education, Kumamoto Municipal Board of Education (Issued in March 2024)

