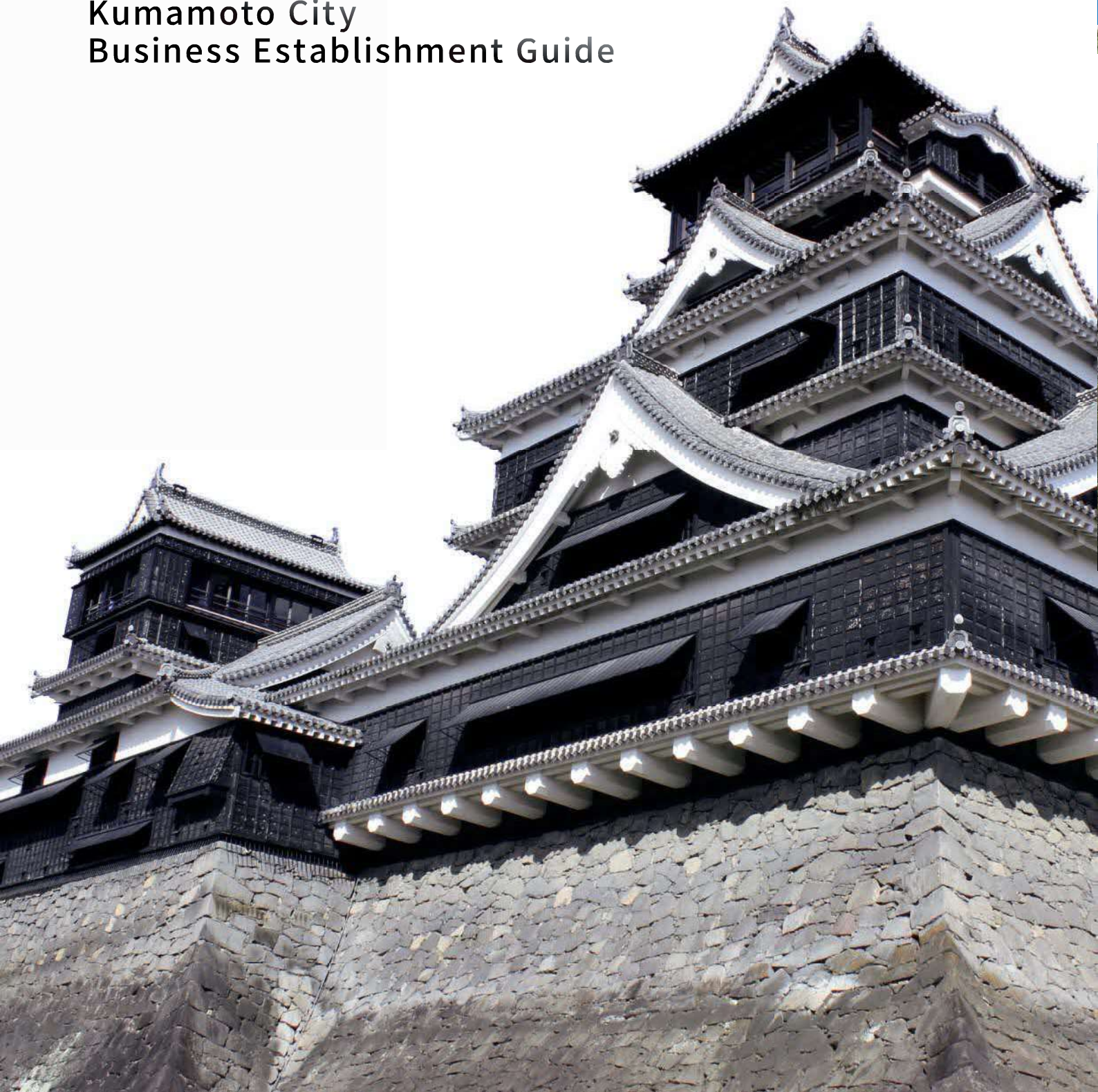


Grow with Us KUMAMOTO

Kumamoto City
Business Establishment Guide



A City with a High Quality of Life

Kumamoto aims to be a city with a high quality of life, where residents can enjoy diverse lives with pride and dreams. We are working on developing communities that not only resonate with traditional culture and entertainment, but also coexist with the rich blessings of nature.

We are also creating an environment where children can be raised with peace of mind and where everyone can move about and live easily.

SAKURA MACHI Kumamoto



Sakura Machi Kumamoto

Created to be a landmark of Kumamoto's Sakura-machi area, this complex includes the public facility Kumamoto-jo Hall and a bus terminal that serves as the cornerstone for transportation inside the prefecture. There are also a variety of fashion and lifestyle stores, restaurants, and a rooftop garden that offers views of the city among the lush greenery and Kumamoto Castle.

Kumamoto Station Area

The area around Kumamoto Station was renovated with the opening of the Kyushu Shinkansen. Its highlights include the station bld, a design based on Kumamoto Castle, large commercial facilities offering the latest trends, and new office buildings. As the gateway to Kumamoto City, it is a popular place for many people.



Kumamoto Station



Shimotori Arcade

Kamitori-Shimotori Arcades

Known as one of the largest arcades in western Japan, the Kamitori-Shimotori Arcades stretch 1km north and south and are lined with an array of shops and cafes. They are often crowded with tourists and residents enjoying the shopping, dining, and seasonal events. Thanks to being located in the middle of the office district, they are ideal places for business.



I want to stay here —



Streetcar

The popular Streetcars that Run Through the City

Streetcars run from east to west through Kumamoto City are popular with both tourists and residents. They charge a flat fare, making them convenient for commuting to work or school.

Strong Medical & Childrearing Environment

Kumamoto City has a very advanced medical system and has set up an emergency system so that pediatrics, internal medicine, and surgery are available 24 hours a day, 365 days a year. In addition, we have achieved Zero waitlists for childcare services for several years and are actively working on improving the childrearing environment, such as by focusing on the care of sick and recovering children.

I want to visit —

I want to live here —

An Introduction to Kumamoto

Kumamoto City is located in central Kyushu and has been blessed with history, culture, and nature, allowing it to develop into a major city of Kyushu.

After the completion of the Kyushu Shinkansen and becoming a designated city, it is continuing to grow with a population of approximately 740,000, or 1,120,000 including the metropolitan area. It has also been steadily recovering since the 2016 Kumamoto Earthquake including the redevelopment of many large-scale commercial facilities.

In the city center, we are promoting projects such as the Machinaka Urban Restoration Project which improves disaster prevention and generates activity around the city. This is expected to lead to further strides in making Kumamoto a more attractive base for tourism, business, and living.

Information

(As of April 1st, 2023)

Population

736,245

Area

390.32 km²

Population Density

1,886 people/km²

Kumamoto Metropolitan Area
Population* (*2020 Census Data)

About 1,120,000

Regional Charm

History & Culture

Kumamoto City is home to many historical buildings and gardens, such as Kumamoto Castle which is considered one of Japan's three famous castles. Charming streetcars run through the nostalgic streets and can take you around to various sightseeing and dining spots.

The city is also attractive as a transportation hub in the prefecture, making it easy to access sightseeing spots like Aso and Amakusa.



Kumamoto Produce

Kumamoto City has soil well-suited for farming. Thanks to its abundant clean water, the area produces a wide range of agricultural products such as watermelons and eggplants, both of which Kumamoto ranks first in the country in terms of acreage.

Local specialties include lotus root, & mustard, taipien soup, horse sashimi, and Kumamoto-style ramen.

Nature

Kumamoto is an attractive city that harmoniously balances urban and natural spaces. It's full of soothing places like the lush Mt. Kinpu and Lake Ezu, which is full of pure spring water.

Known as the city with the best groundwater in all of Japan, its abundant water source supports the lives of all the city's residents.



Statue of Luffy
©Eiichiro Oda / Shueisha

ONE PIECE Straw Hat Pirates Statues

As part of the ONE PIECE Kumamoto Revival Project, bronze statues of the Straw Hat Pirates who appear in the series have been set up all over the prefecture.

Kumamoto City is the birthplace of the manga artist Eiichiro Oda, and the statues of Luffy and Chopper have become popular tourist spots.



Kumamoto Castle



Lake Ezu

In the Center of Kyushu: Kumamoto

— Transportation Map —

Excellent Access to Major Cities in Kyushu and Japan

Kumamoto City is located in the heart of Kyushu, making it a convenient place for both foreign and domestic business, as well as tourism.

| Land

Using the Shinkansen or highway buses, it is possible to travel to major cities in Kyushu, such as Fukuoka and Kagoshima, within one hour.

Minimum Time Using JR

Shinkansen from Kumamoto Station

- Shin-Osaka: **2 Hours 57 Minutes**
- Hakata: **33 Minutes**
- Kagoshima: **43 Minutes**

Driving Times

Ordinary Vehicles from the Kumamoto IC

- Fukuoka: 75 Minutes
- Nagasaki: 120 Minutes
- Saga: 60 Minutes
- Oita: 150 Minutes
- Miyazaki: 120 Minutes
- Kagoshima: 120 Minutes

Time Needed to Go to the Airport

Limousine Bus

From Sakuramachi Bus Terminal

- Kumamoto Airport: 50 Minutes

| Sea

Kumamoto Port

[Regular International Container Service]

- Busan Port, South Korea: 3 Trips per Week

[Regular Passenger Service]

- Shimabara Port, Nagasaki: 16 Trips per Week

| Air

Using an airplane, it is possible to reach major Japanese cities in less than two hours. Direct flights to other Asian cities are also possible, allowing for easy access.

Asia's Gateway: Kyushu



Operating Hours and

Number of Flights to

Major Airports

From Kumamoto Airport

[Domestic Flights]

- Tokyo (Haneda): **90 Minutes, 18 Flights per Day**
- Tokyo (Narita): 100 Minutes, 3 Flights per Day
- Nagoya (Chubu Centrair): 75 Minutes, 2 Flights per Day
- Osaka (Itami): 65 Minutes, 13 Flights per Day
- Okinawa (Naha): 90 Minutes, 1 Flight per Day

[International Flights]

- Seoul (Incheon): **90 Minutes, 7 Flights per Day**
- Taiwan (Taoyuan): **135 Minutes, 7 Flights per Day**
- Taiwan (Kaohsiung): 150 Minutes, Not in Service

(As of Sept. 2023)



Building the Future of Kumamoto The 10-and-20-Minute Concept

Improving convenient transportation to revitalize economic activity!

We aim to improve access to each hub from the center of Kumamoto City.

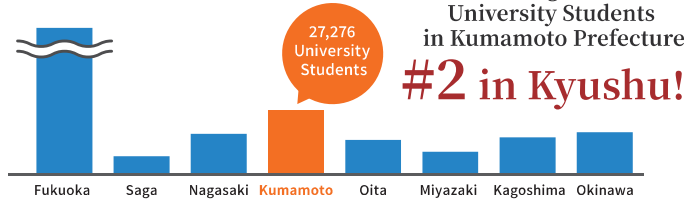
- Highways
- **About 10 minutes** to the Interchange
- **About 20 minutes** to Kumamoto Airport

Outstanding Human Resources

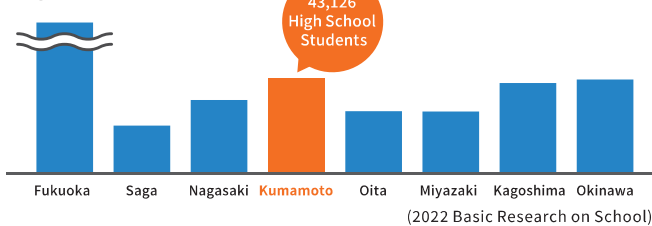
Kumamoto Prefecture has 10 Universities, three junior colleges, and one technical college. Of these, eight universities and one junior college are concentrated in Kumamoto City. The engineering and science departments are particularly rich, and graduates have been demonstrating a high degree of skill at companies, such as in their R&D or management departments.

Number of Students in Each Prefecture of Kyushu

[University Students]

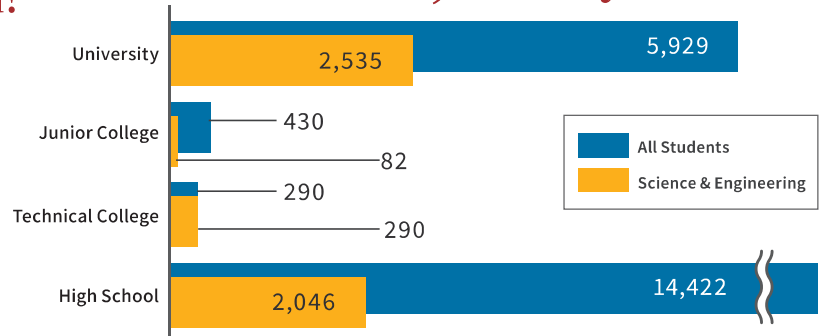


[High School Students]



Number of Graduates in the Prefecture (All / Science & Engineering)

Science & Engineering Graduates
About 5,000 a year!



(2022 Kumamoto Prefecture Survey)

A Diverse Job Placement Environment

Kumamoto City is dedicated to allowing companies that set up here to operate smoothly by fostering partnerships with educational institutions, helping to acquire talented human resources, and creating business opportunities.



Holding Job Fairs and More

As a way to create opportunities for businesses and job-seekers to connect, we are holding regular job fairs for general job-seekers and university students. In addition, for high school students, we also hold roundtable discussions between teachers and companies in the prefecture. This allows the companies to directly let the teachers know what they have to offer students when they decide on a career path.



Kumamoto City UIJ Turn Support Desk

For those wishing to move to Kumamoto City, our relocation support staff provide consultation regarding making the move to the city. Also, the employment support staff will meet the needs of those looking for work and aim to promote employment at local companies to people from outside the prefecture.



Xoss Point

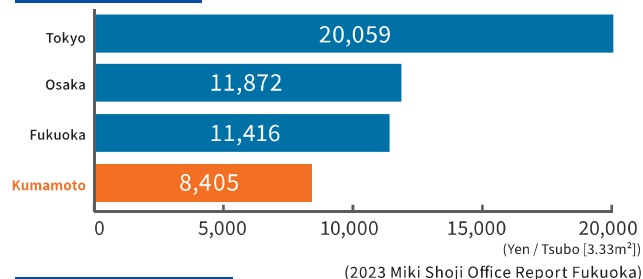
Xoss Point is the first startup support service in Kumamoto city and provides the ideal environment for entrepreneurs and companies aiming to develop new markets. In addition to holding regular networking events and connecting companies that share similar interests, we collaborate with local governments and public groups inside and outside the prefecture to create business opportunities. We also set up collaborations that focus on regional development.

An Excellent Investment Environment

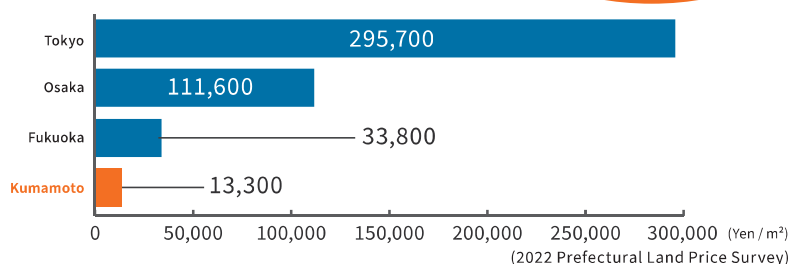
Kumamoto City has a business environment with excellent cost performance, such as low office rent and land prices, providing huge benefits for businesses that choose to expand here.

Low costs compared to the rest of Japan!

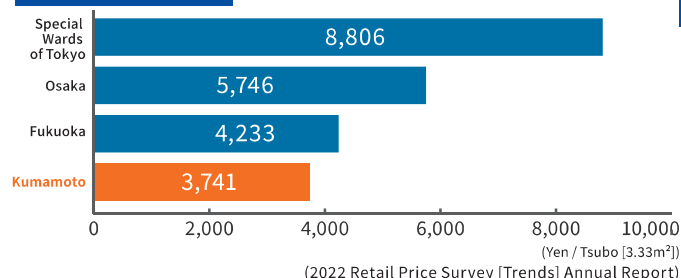
Office Rent



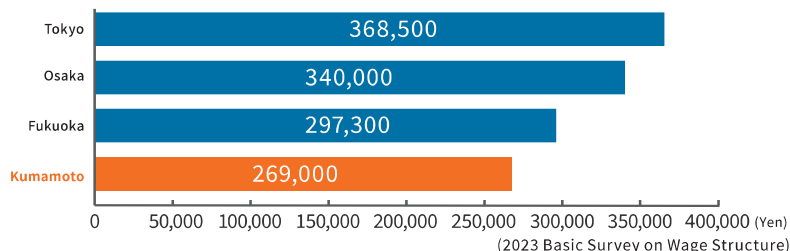
Average Price of Industrial Property



Monthly Rent



Wages by prefecture



Abundant High-Quality Water Resources

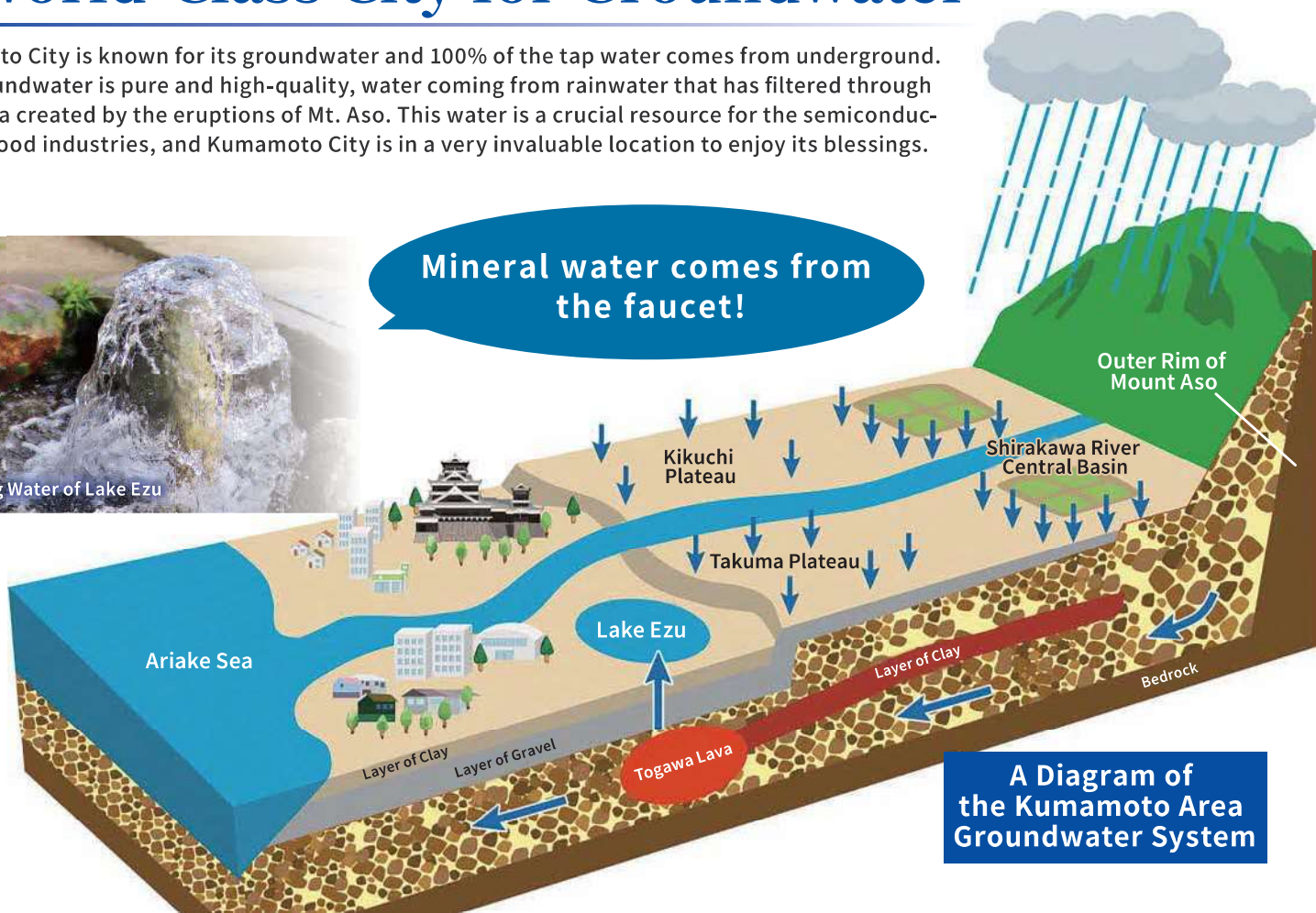
A World-Class City for Groundwater

Kumamoto City is known for its groundwater and 100% of the tap water comes from underground. This groundwater is pure and high-quality, water coming from rainwater that has filtered through the strata created by the eruptions of Mt. Aso. This water is a crucial resource for the semiconductor and food industries, and Kumamoto City is in a very invaluable location to enjoy its blessings.



The Spring Water of Lake Ezu

Mineral water comes from the faucet!



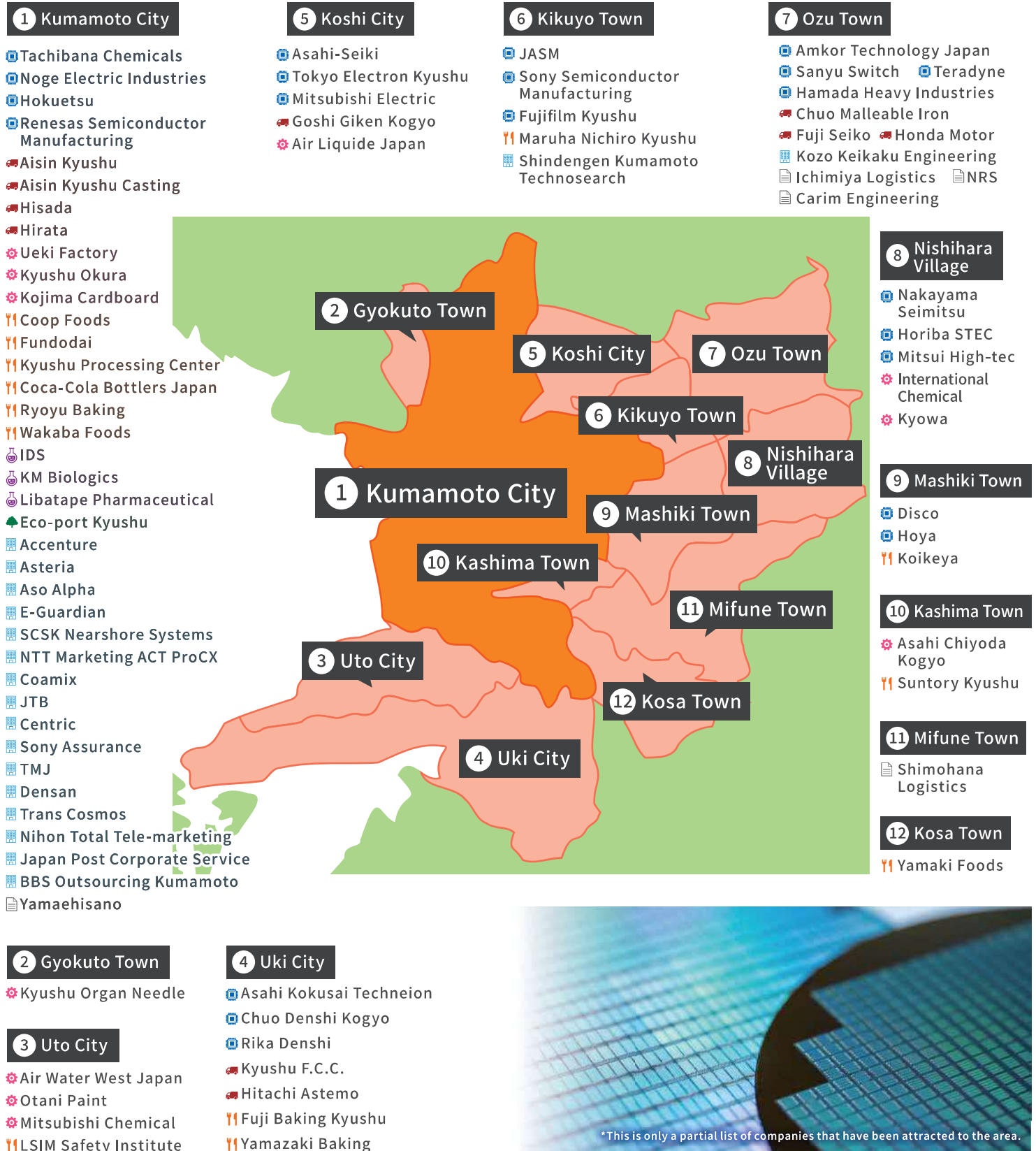
A Diagram of the Kumamoto Area Groundwater System

Industrial Landscape

Kyushu can be called "Silicon Island" because of the large concentration of semiconductor companies that operate there. And within it, the Kumamoto Metropolitan Area is home to a variety of businesses such as semiconductors, automobiles, and food production, making it an environment that facilitates cooperation and collaboration. Rich in resources like water and land, the entire metropolitan area has been attracting a lot of attention as a destination for investment and innovation.

Major Companies in the Kumamoto Metropolitan Area

 Semiconductor Related  Vehicle Related  General Manufacturing  Food Production Related
 Medical Product Related  Environment Related  Office Related  Other





An Introduction to the Business Establishment Subsidy System

Kumamoto City offers a **nationally top-class subsidy system**.

Can be used with the prefectural system for

Up to

8 Billion Yen

Subsidies Under the Business Establishment Promotion Act

Support for purchasing property, hiring staff, and other expenses involved in establishing a business in Kumamoto City

Support for Manufacturing and Logistics Industries

Up to

3 Billion Yen

- **Target Industries:** Manufacturing, Packaging, Transportation of Goods by Road, Warehousing
- **Target Facilities:** Factories, Distribution Centers, R&D Facilities
- **Eligibility Requirements:** Increase Staff by 5 or More Employees (Depending on Business), Fixed Asset Acquisition of 10 Million Yen or More (Depending on Business)
- **Content of Subsidy:**
 - Land Acquisition Subsidy** 15% of the Cost of Land Acquisition, Half of Rent (Land & Building) for 12 Months
 - Capital Investment Subsidy** 7-10% of the Cost of Fixed Asset Acquisition (Buildings & Depreciable Assets)
 - Employment Promotion Subsidy** Up to 1 Million Yen per New Full-time Employee

Support for IT and Communication Industries

Up to

300 Million Yen

- **Target Industries:** Software, Machine Design, Entertainment Media, Internet-related Services
- **Target Facilities:** Administrative Centers, Call Centers, Offices
- **Eligibility Requirements:** Increase Staff by 5 or More Employees (Depending on Business)
- **Content of Subsidy:**
 - Land Acquisition Subsidy** 15% of the Cost of Land Acquisition, Half of Rent (Land & Building) for 36 Months
 - Capital Investment Subsidy** 9-10% of the Cost of Fixed Asset Acquisition (Buildings & Depreciable Assets)
 - Employment Promotion Subsidy** Up to 1 Million Yen per New Full-time Employee

Kumamoto City aims to grow together with all of its businesses step-by-step.
Please consider locating to Kumamoto City.

For more information

Kumamoto City Industry and Investment Attraction Section

Postal Code: 860-8601 1-1 Tetorihoncho, Chuo Ward, Kumamoto City Kumamoto City Hall 8th Floor

TEL : +81-96-328-2386 E-mail : kigyouritti@city.kumamoto.lg.jp

Kumamoto City Tokyo Branch Office

Postal Code: 102-0093 2-4-1 Hirakawacho, Chiyoda City, Tokyo Japan Municipal Research Center 9th Floor

TEL : +81-3-3262-3840 E-mail : toukyoujimuso@city.kumamoto.lg.jp

Check it out!

Kumamoto City official Website
Corporate Location Information

