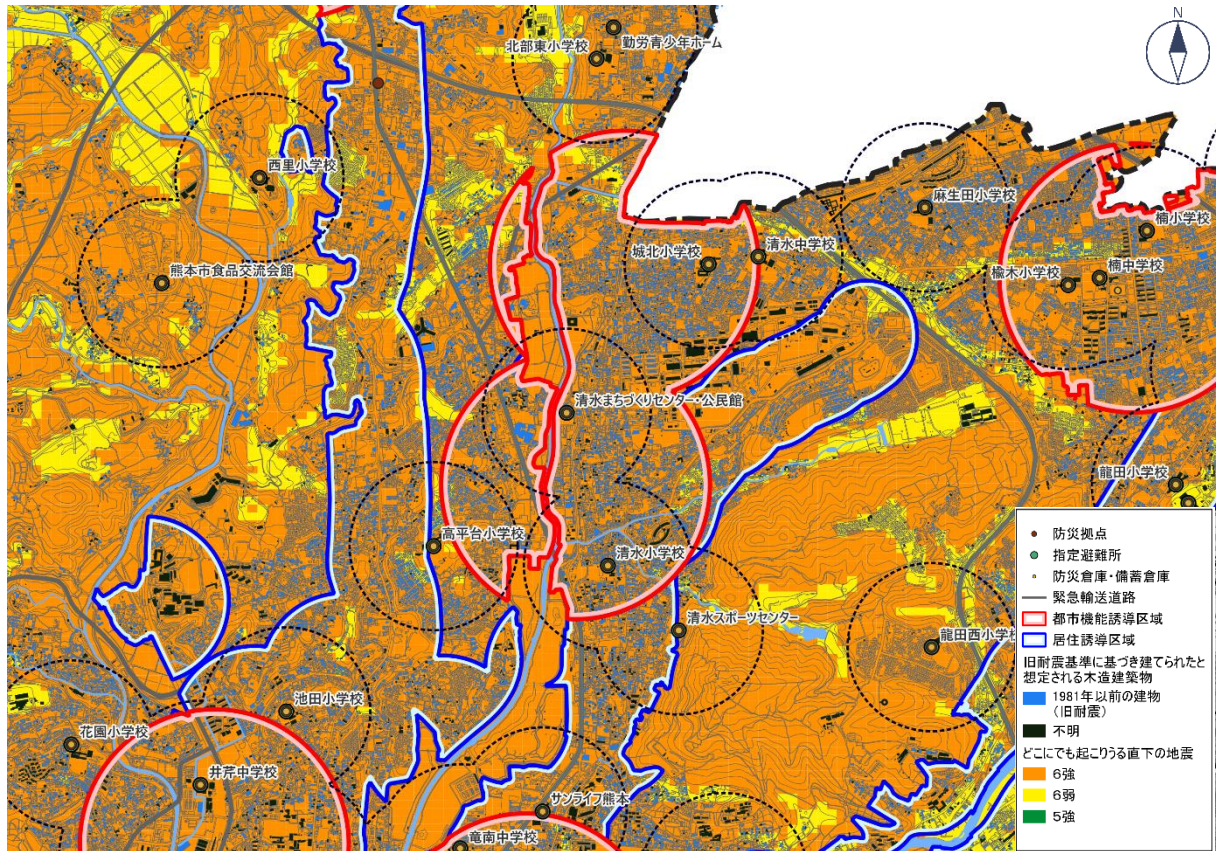
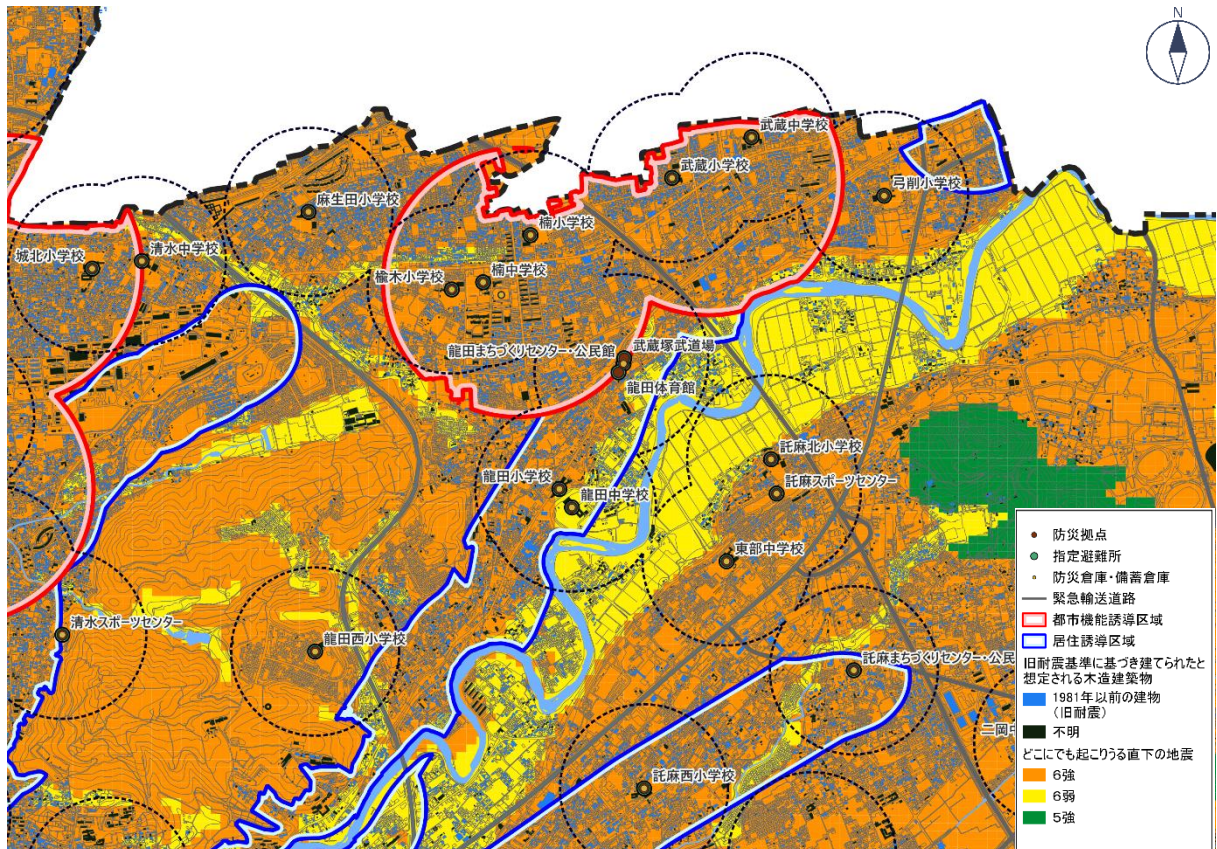


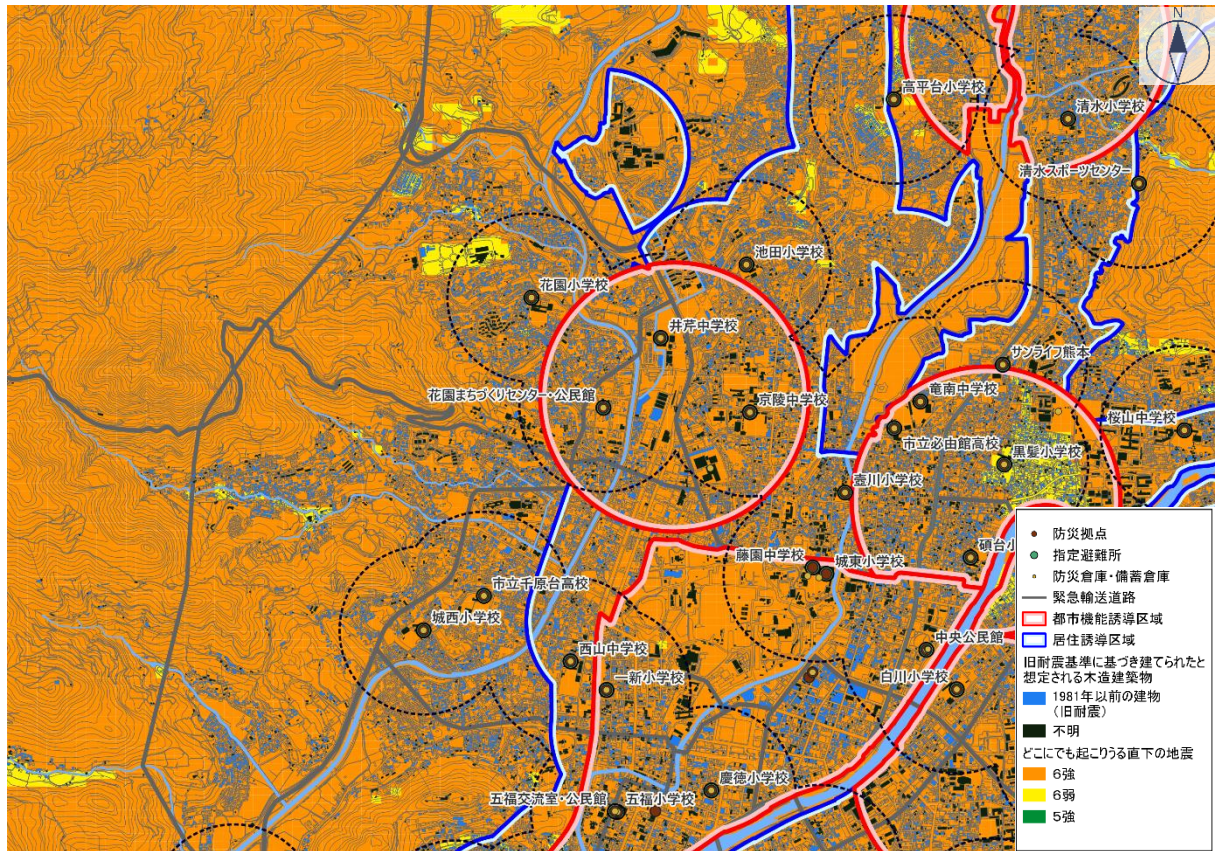
③ 八景水谷・清水亀井地区



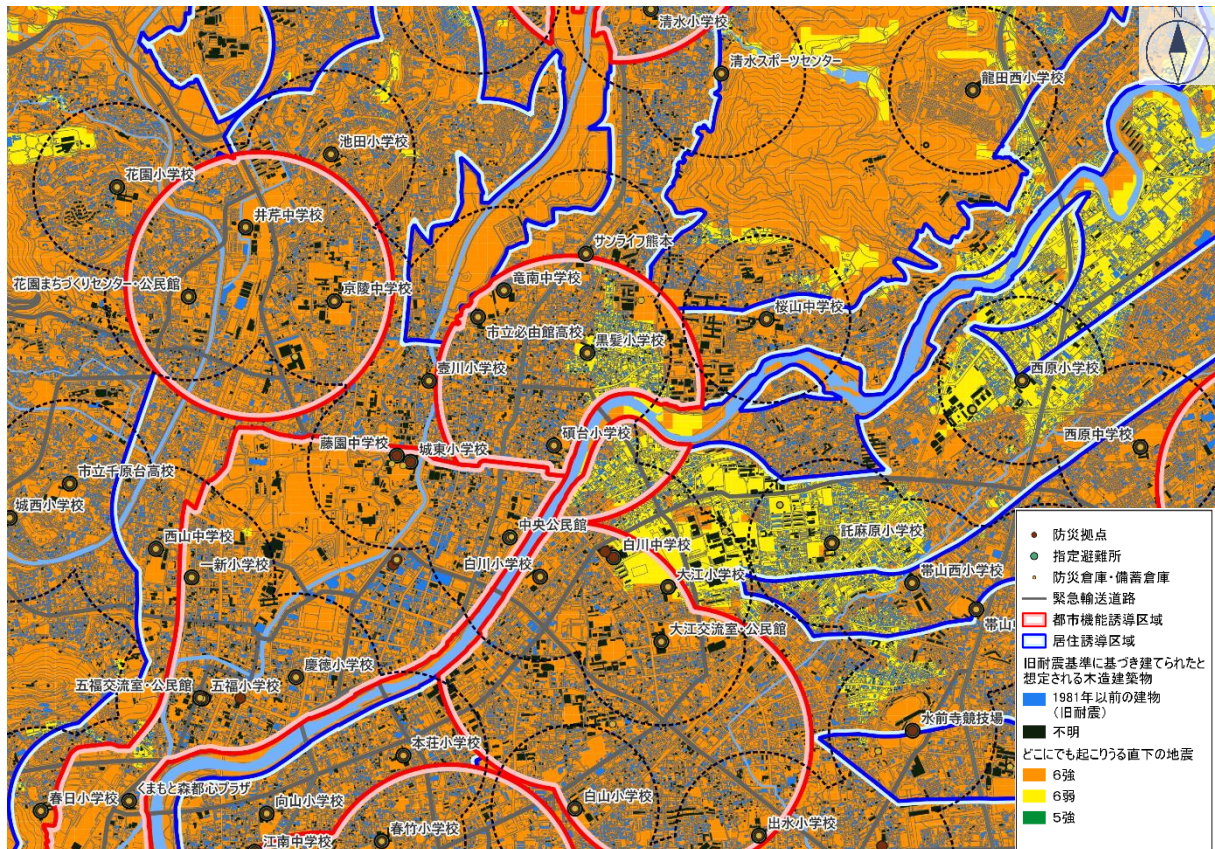
④ 楠・武蔵ヶ丘地区



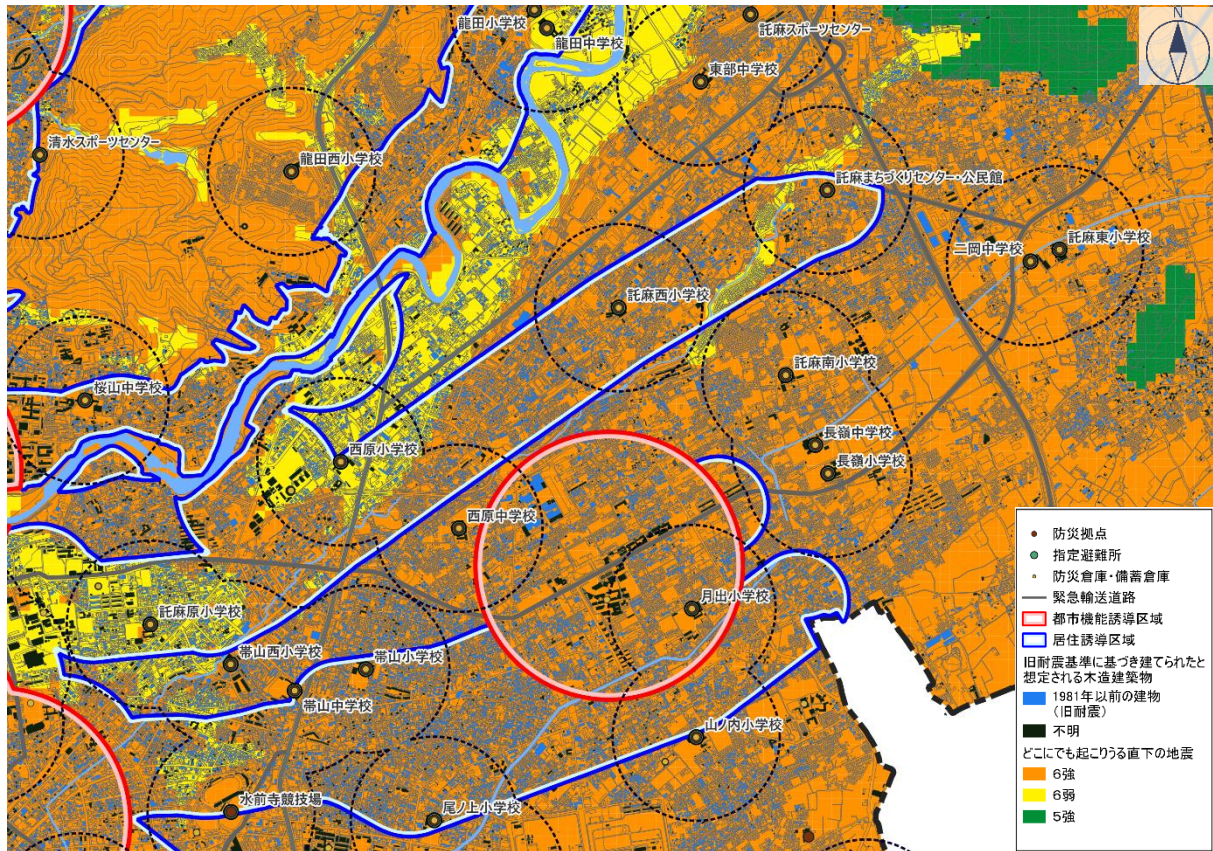
⑤ 上熊本地区



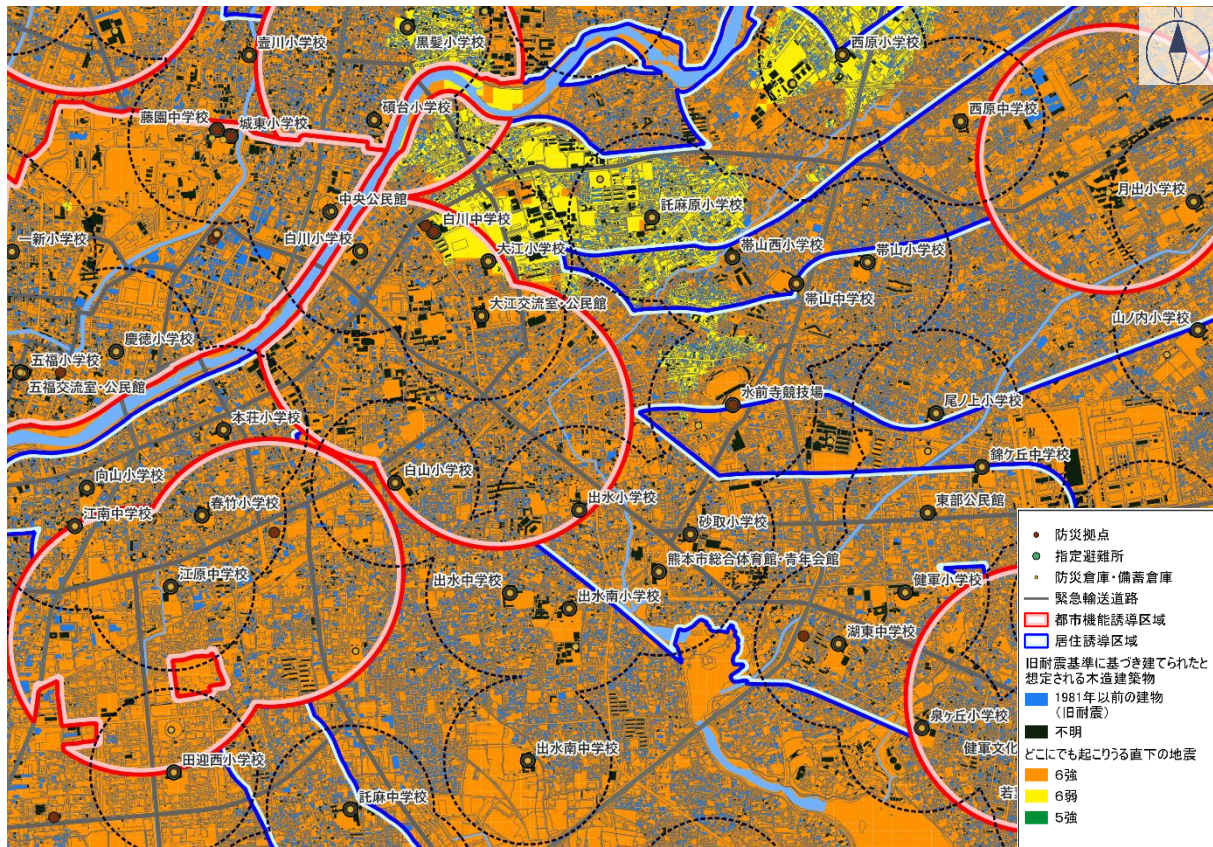
⑥ 子飼地区



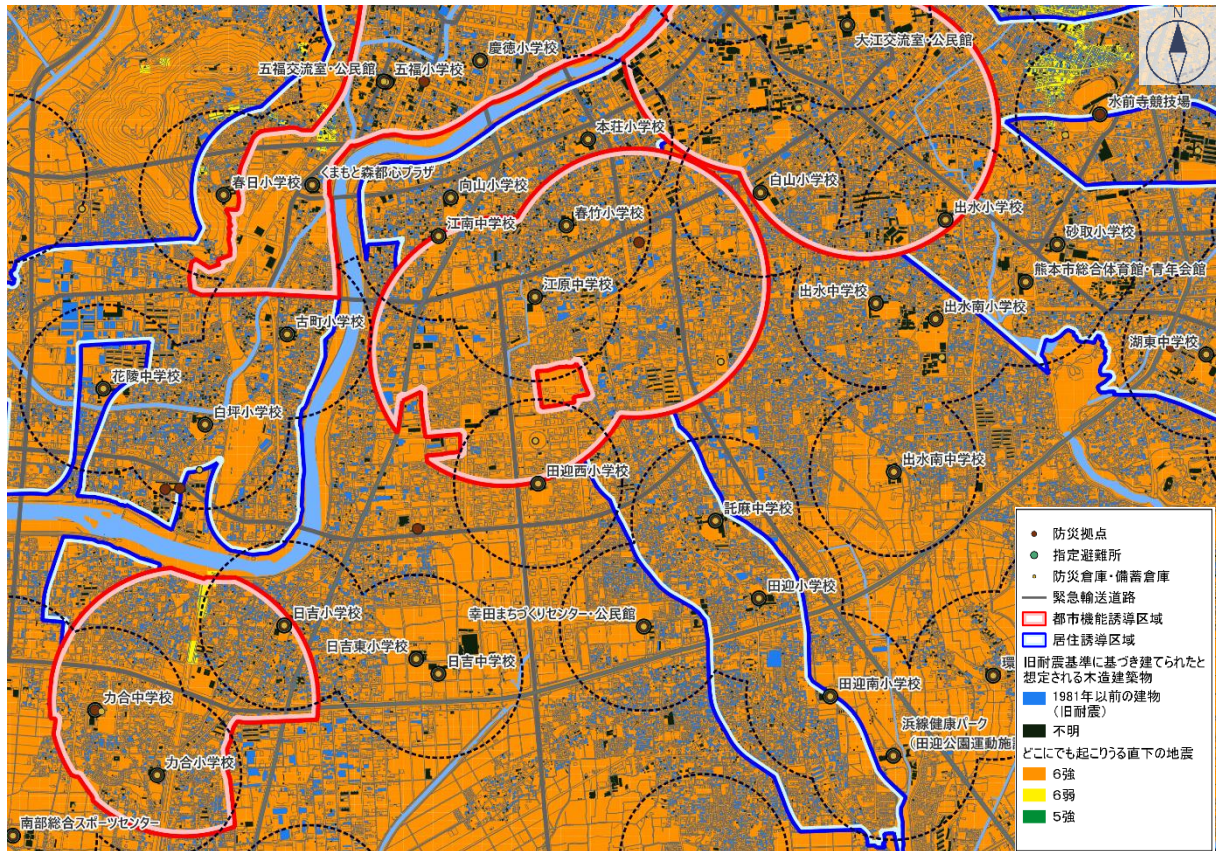
⑦ 長嶺地区



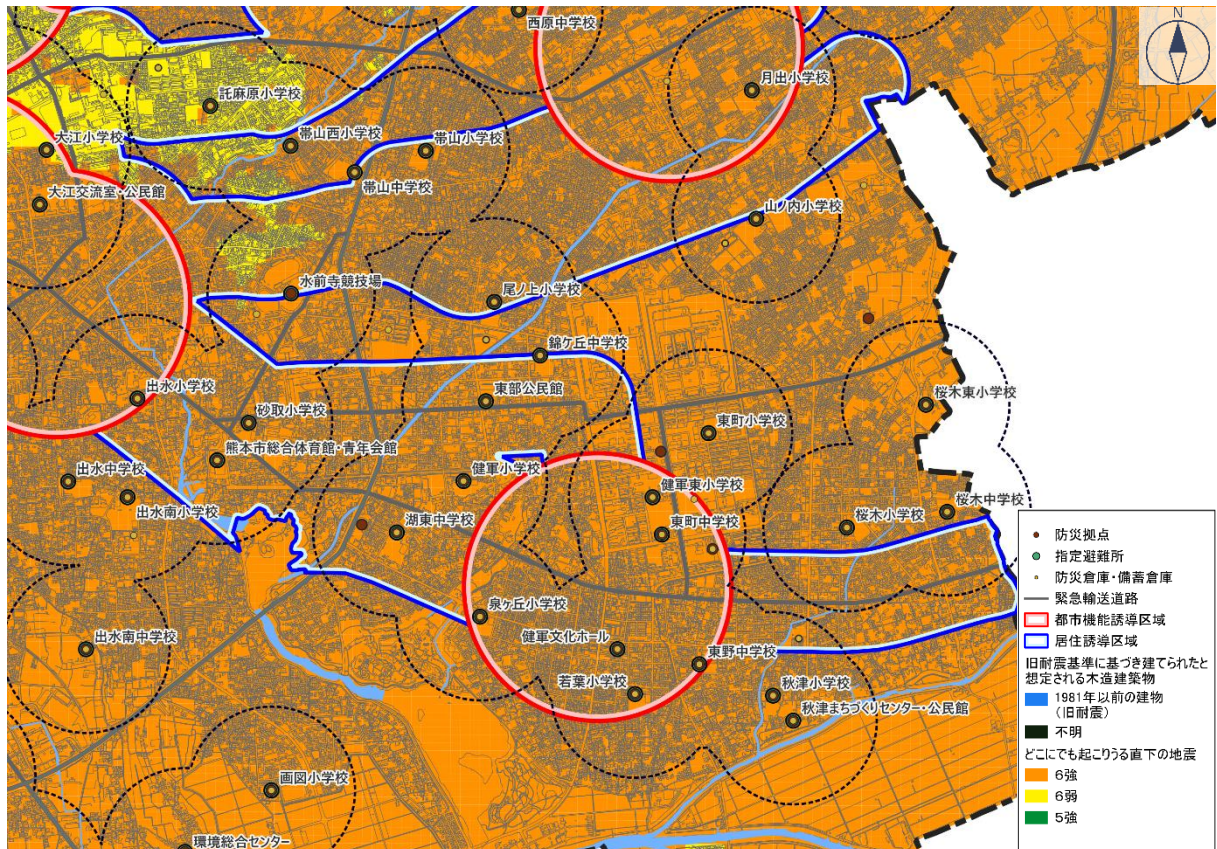
⑧ 水前寺・九品寺地区



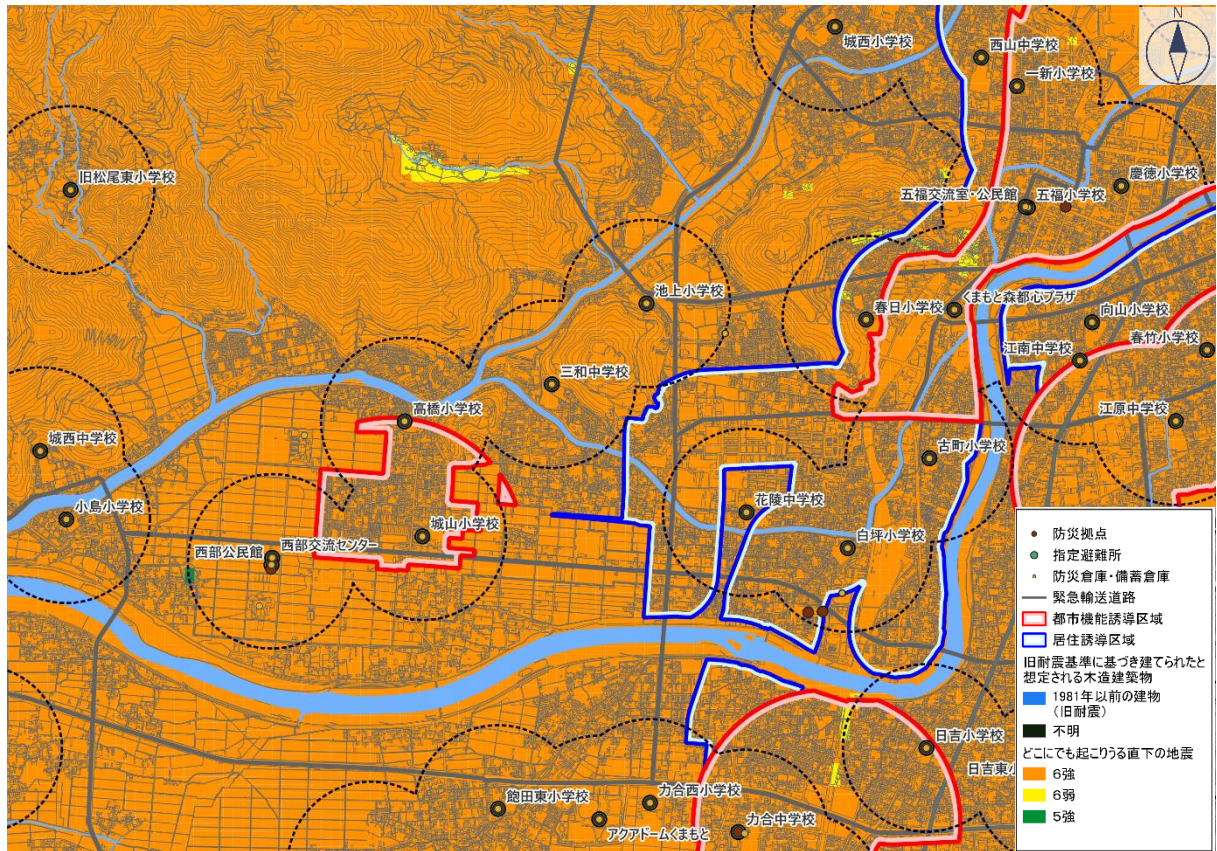
⑨ 平成・南熊本地区



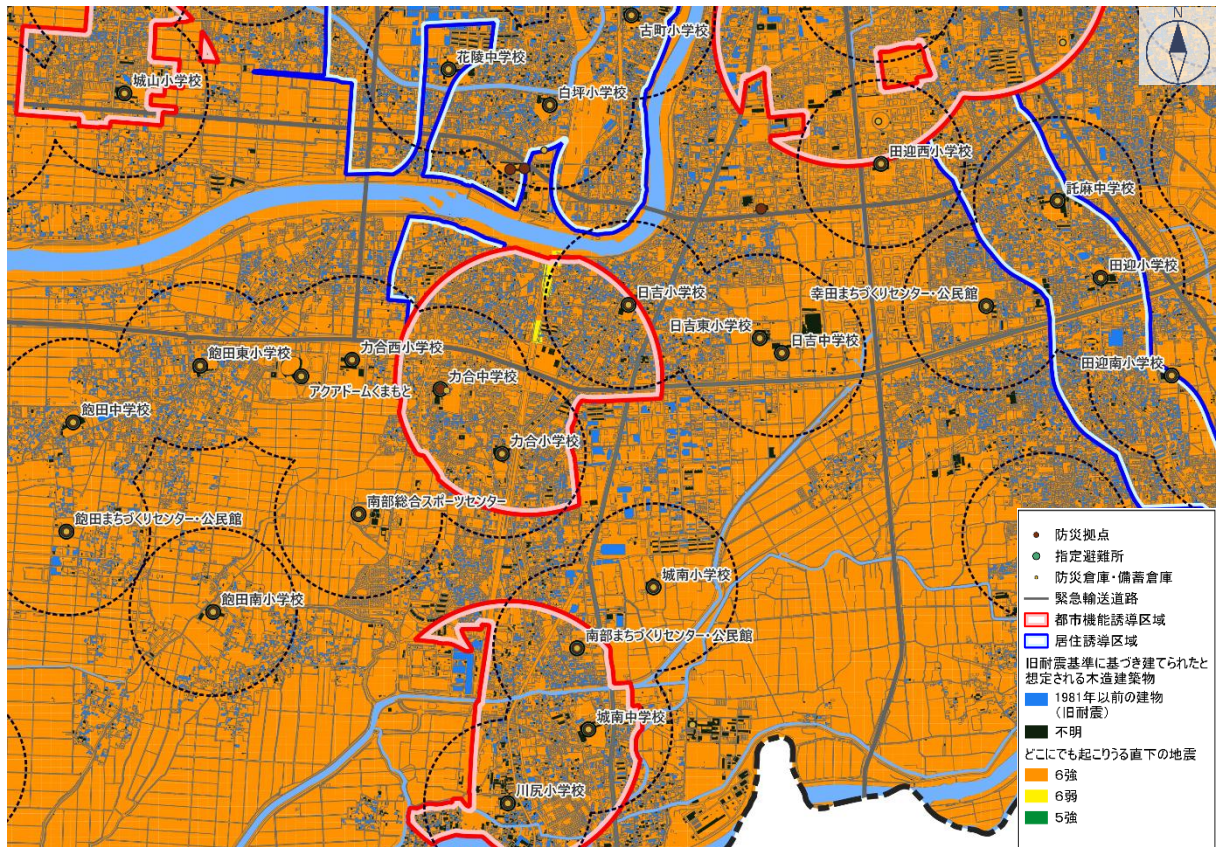
⑩ 健軍地区



⑪ 城山地区



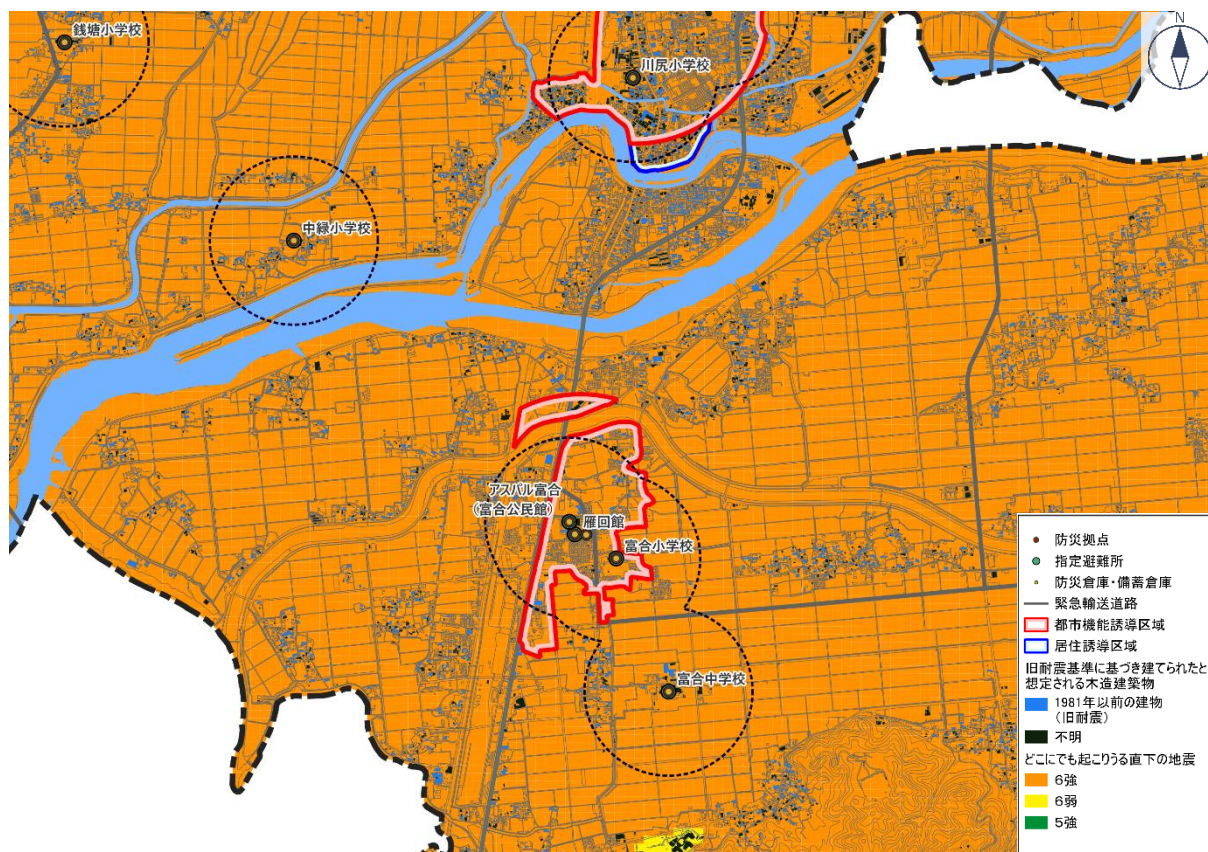
⑫ 刈草地区



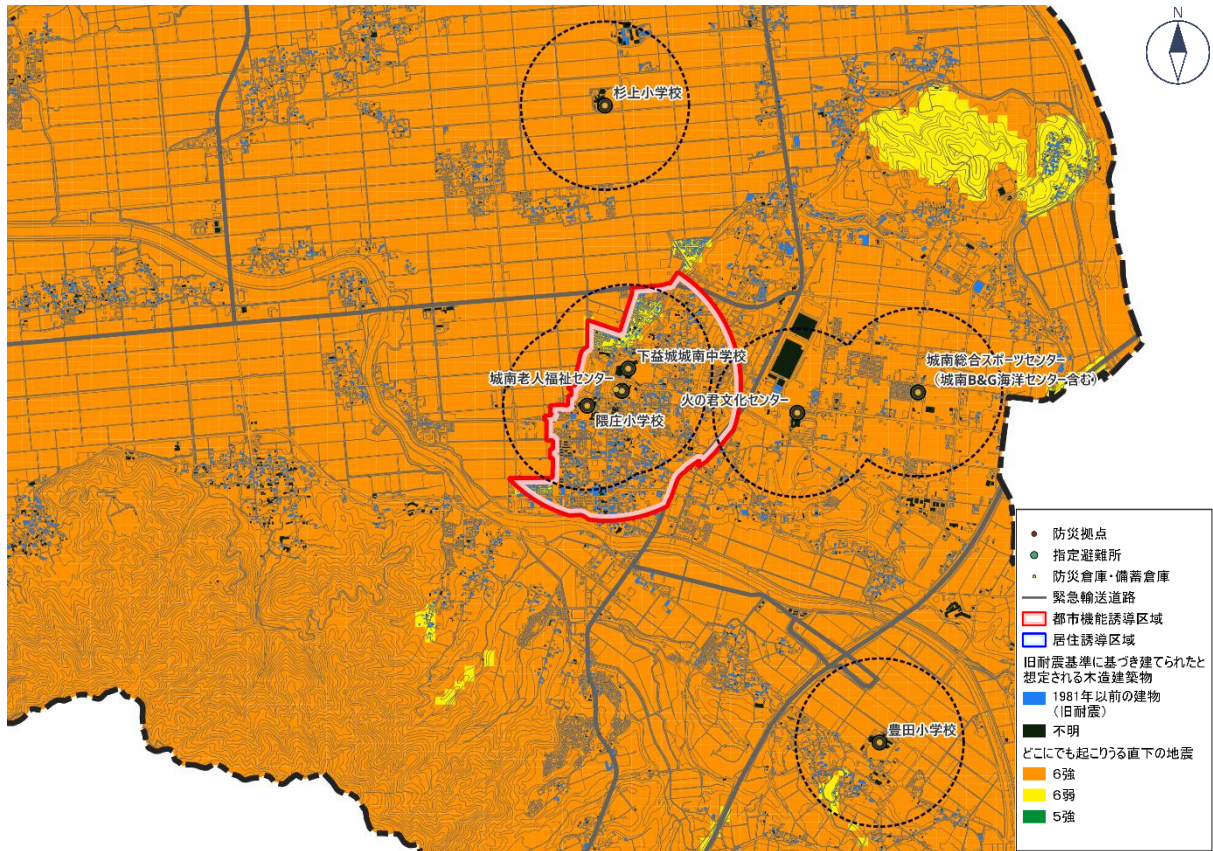
⑬ 川尻地区



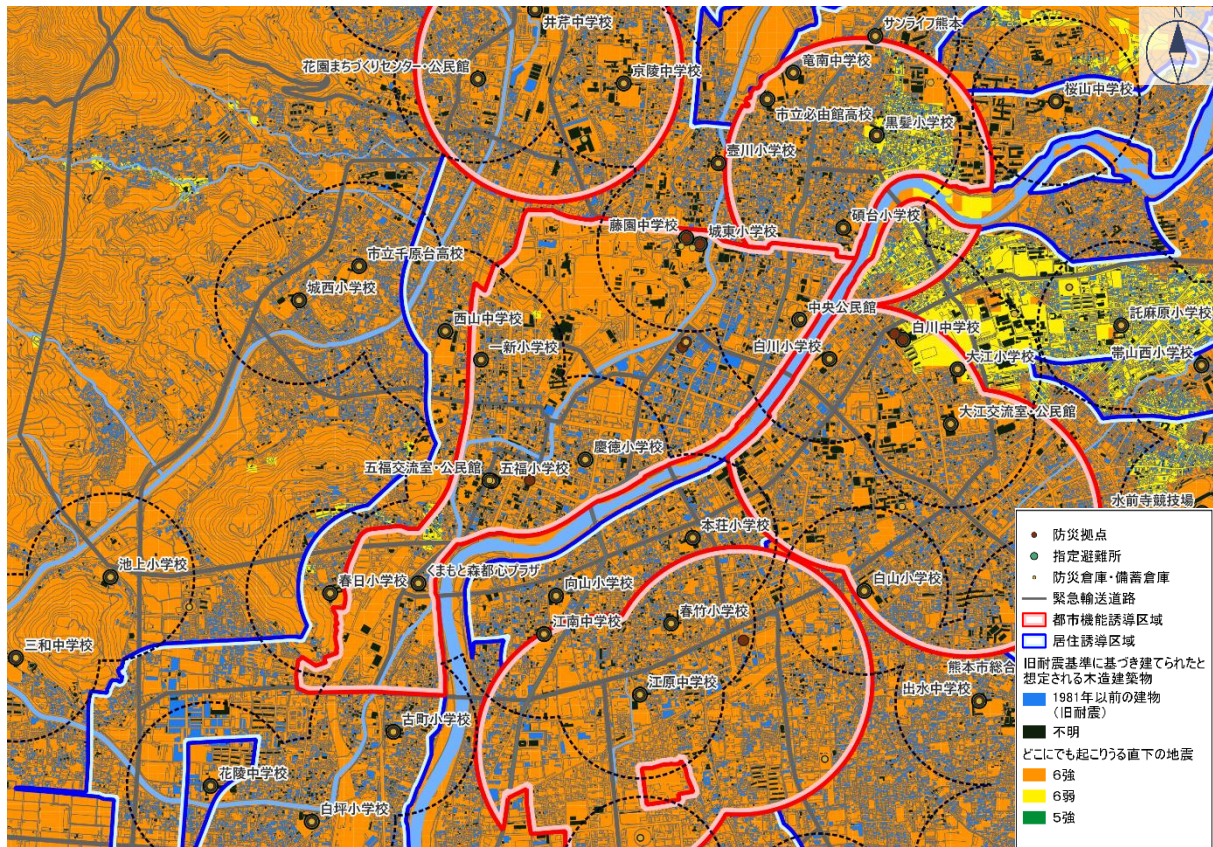
⑭ 富合地区



⑮ 城南地区

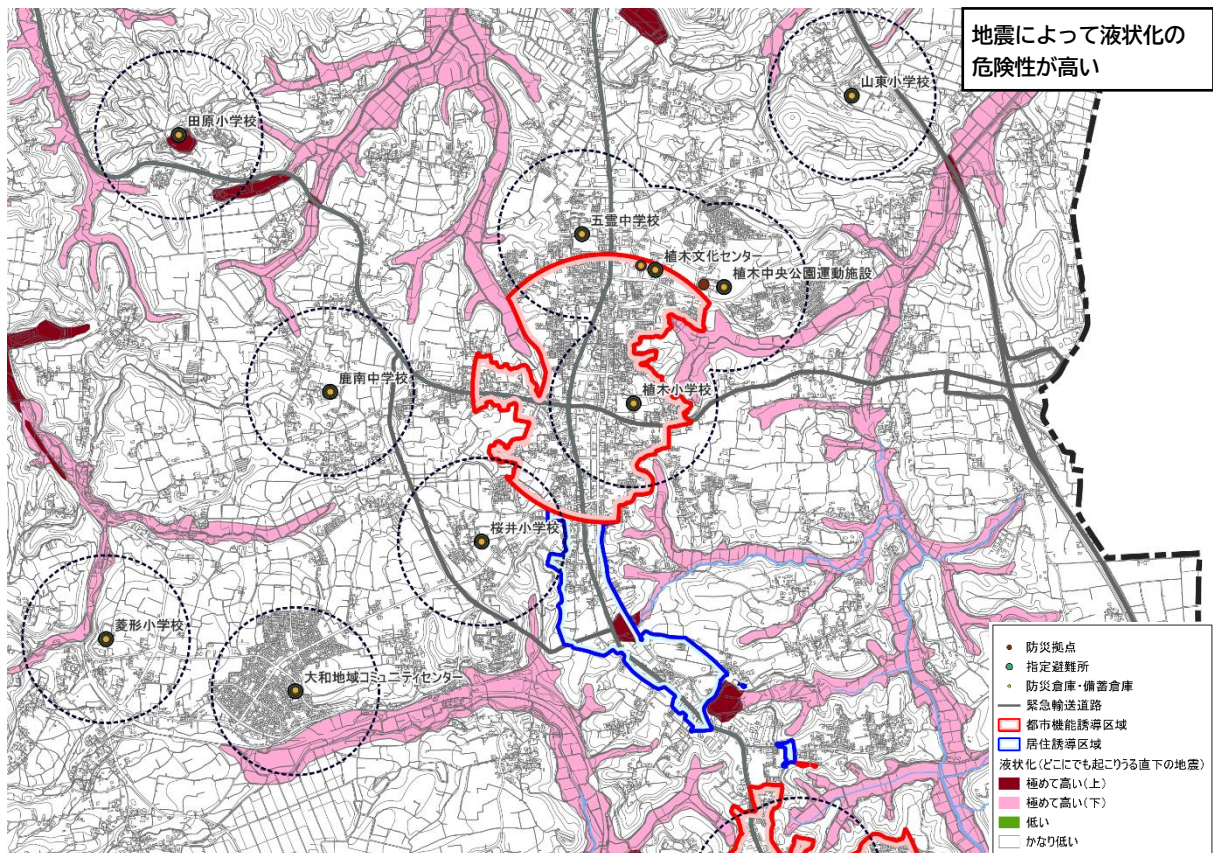


⑯ 中心市街地地区

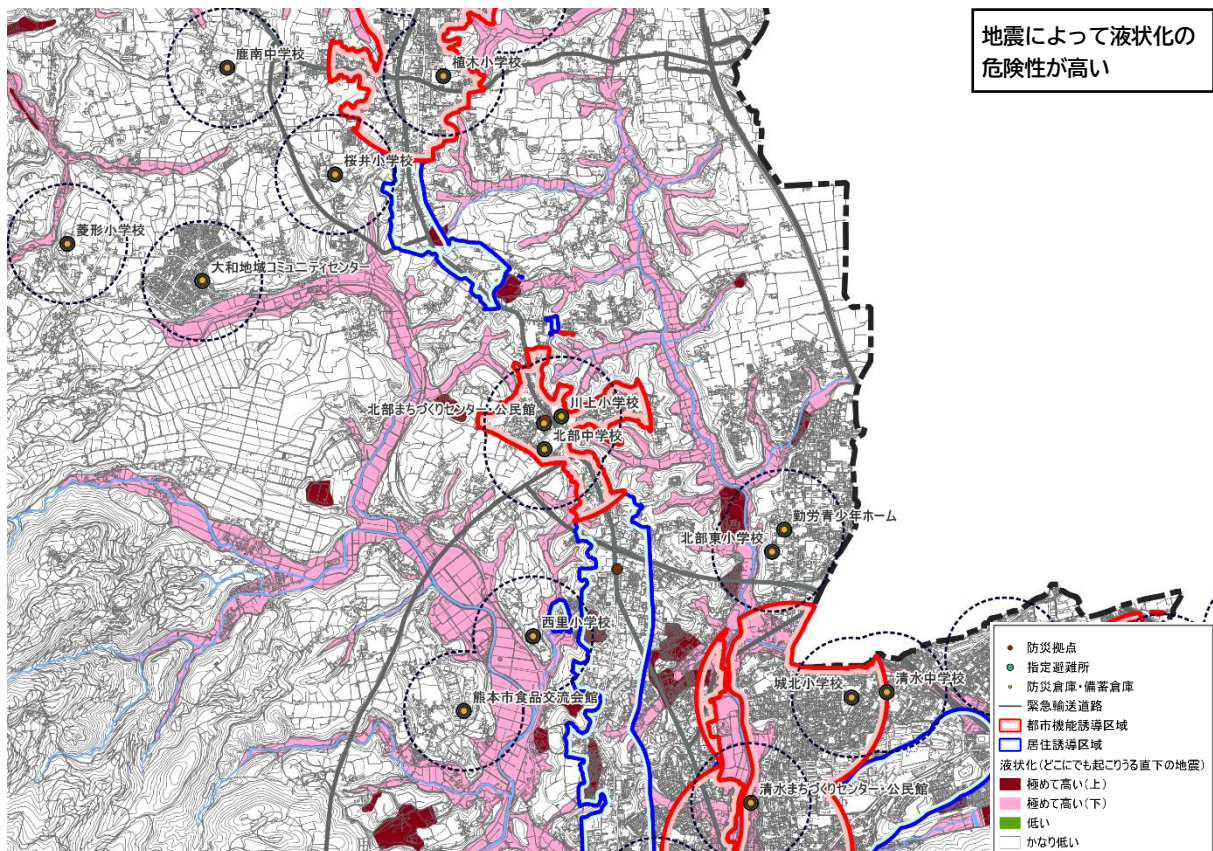


「どこにでも起こりうる直下の地震（液状化）」の分析

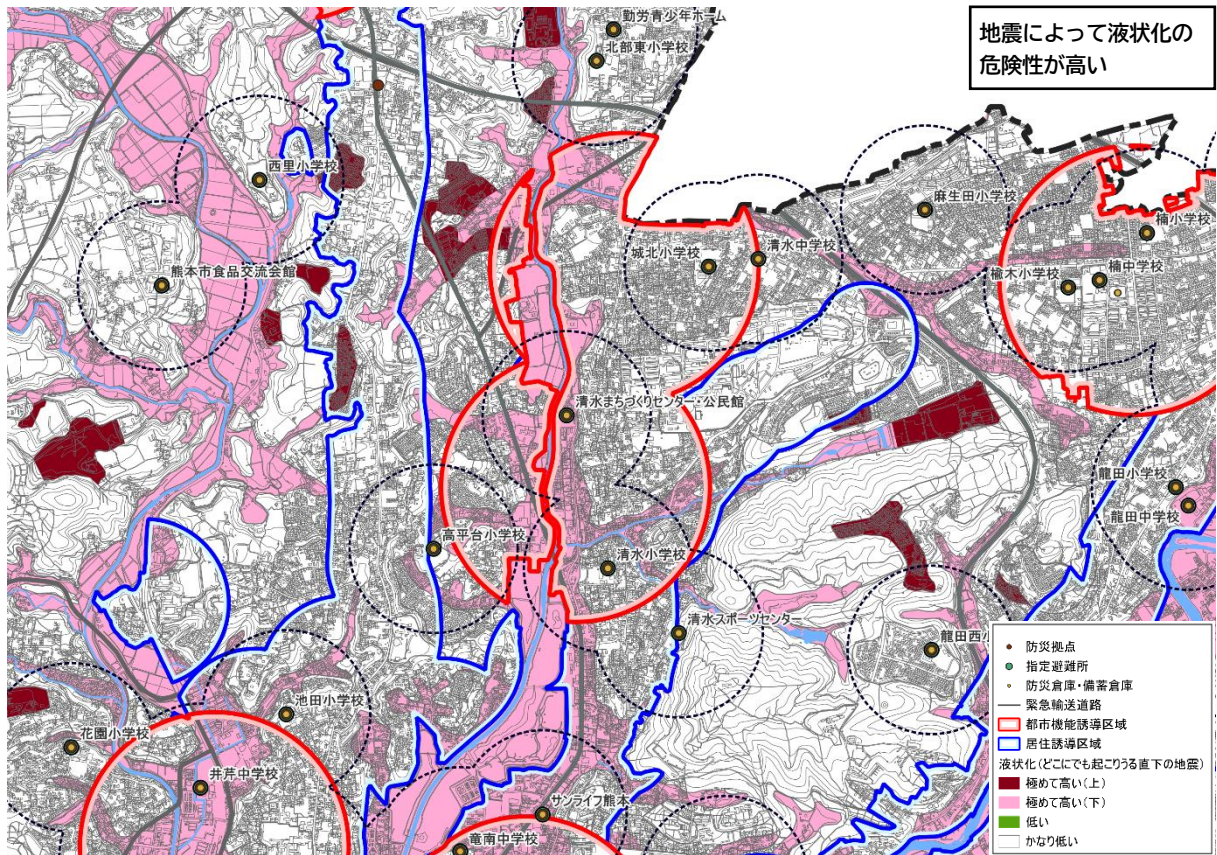
① 植木地区



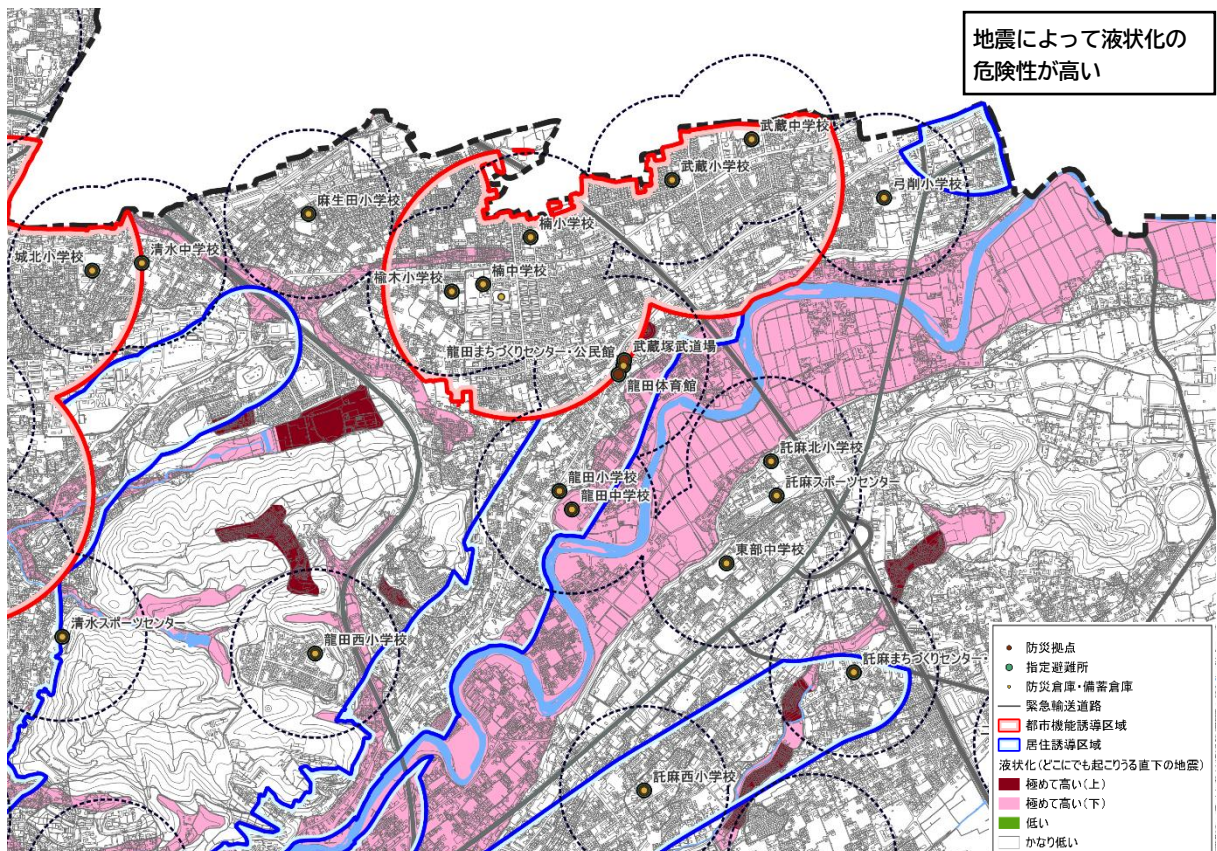
② 北部地区



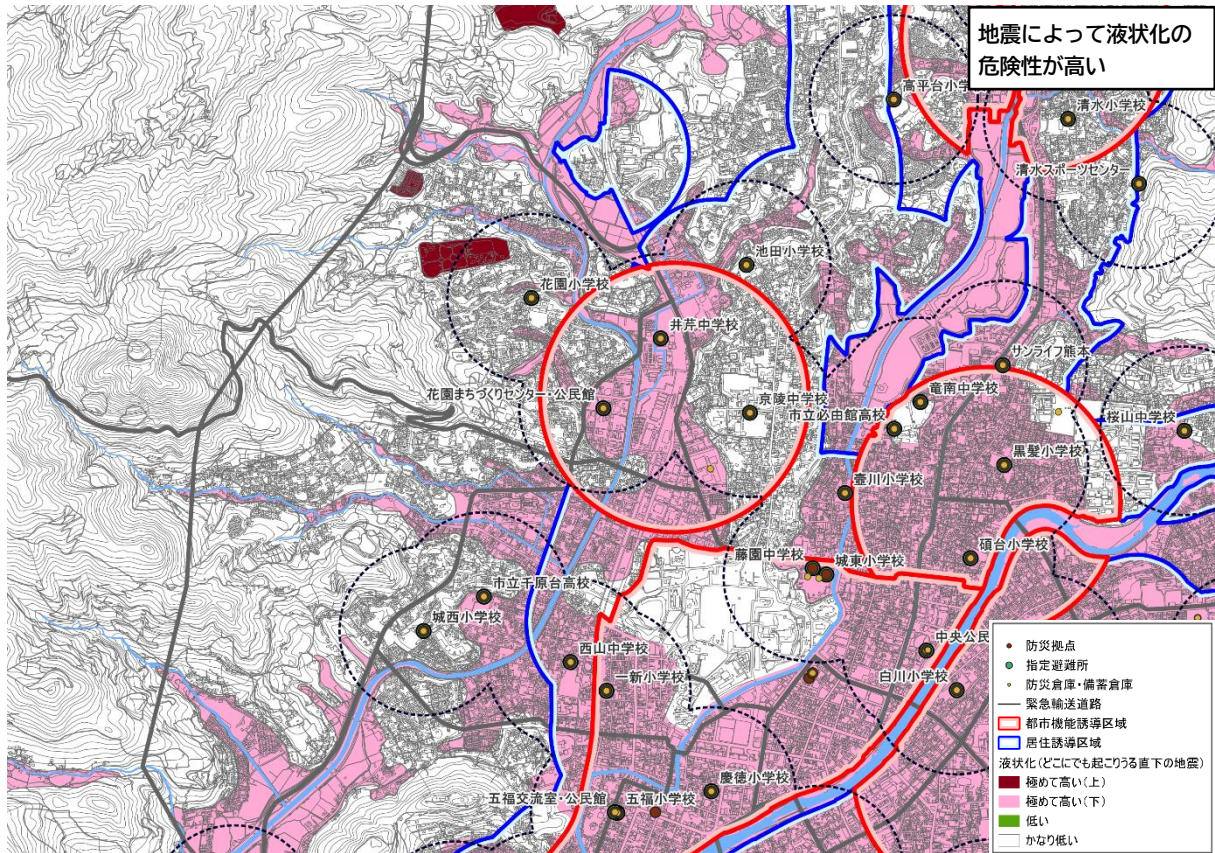
③ 八景水谷・清水亀井地区



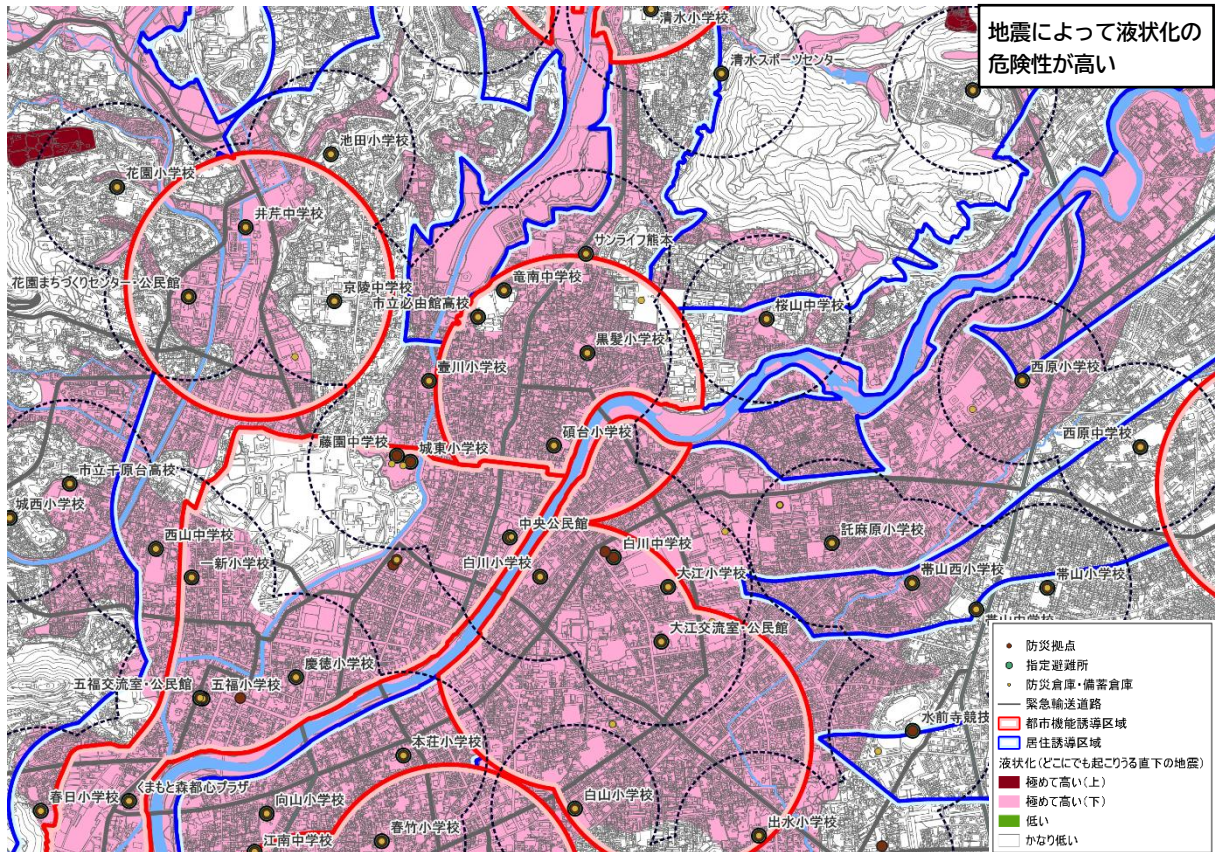
④ 楠・武蔵ヶ丘地区



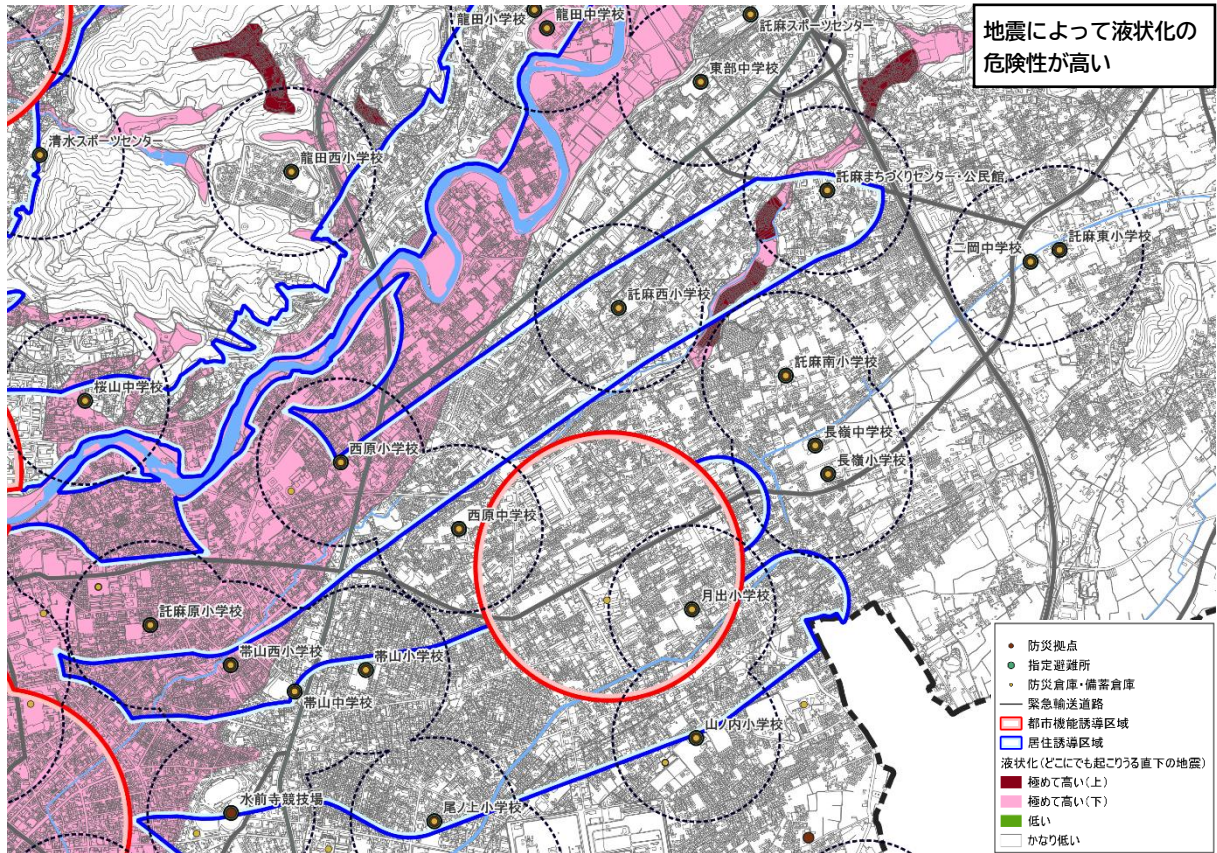
⑤ 上熊本地区



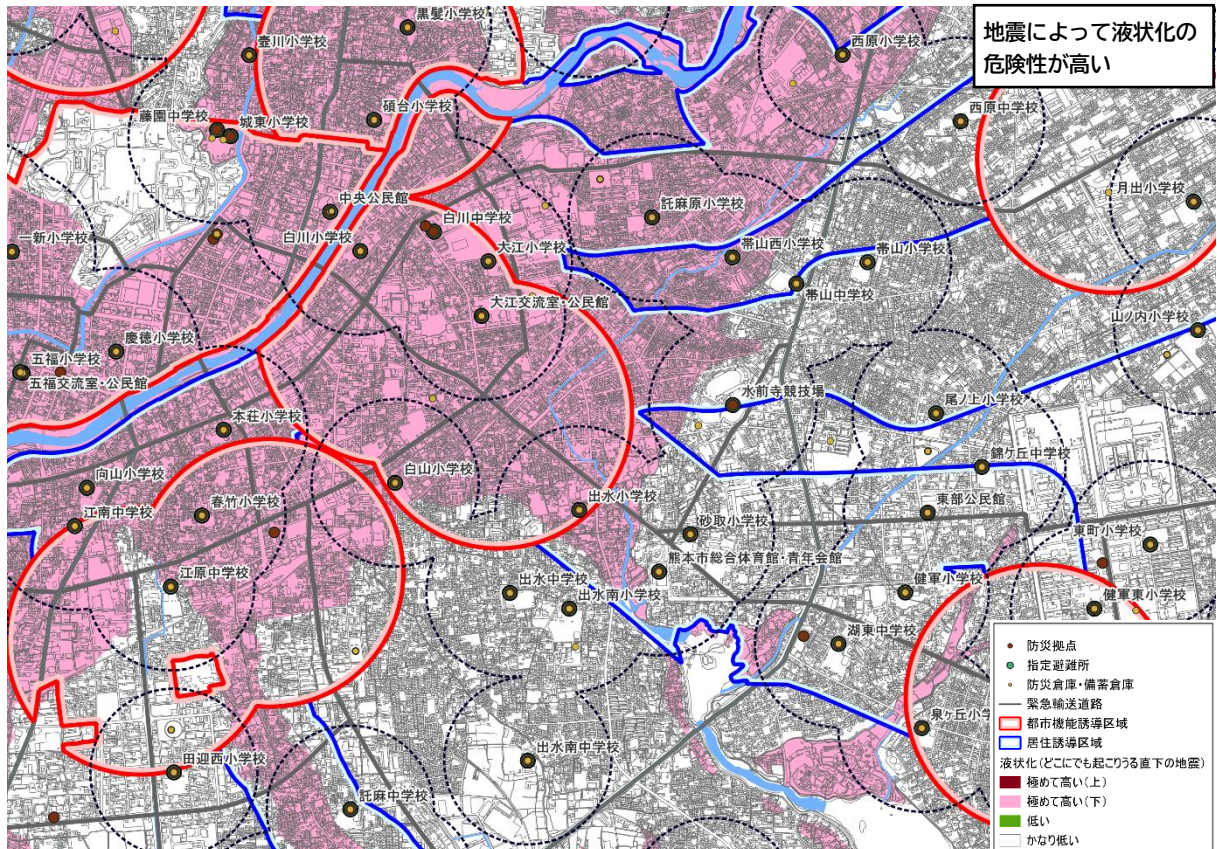
⑥ 子飼地区



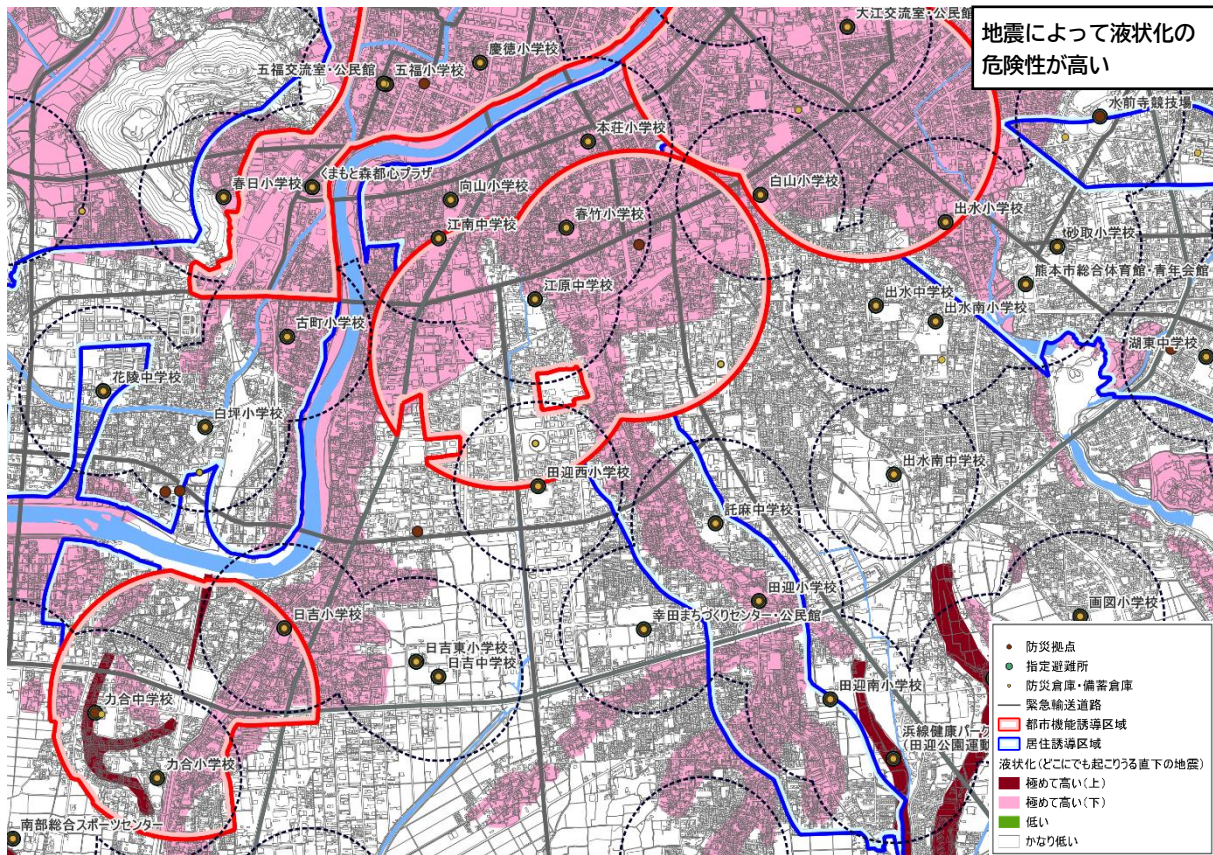
⑦ 長嶺地区



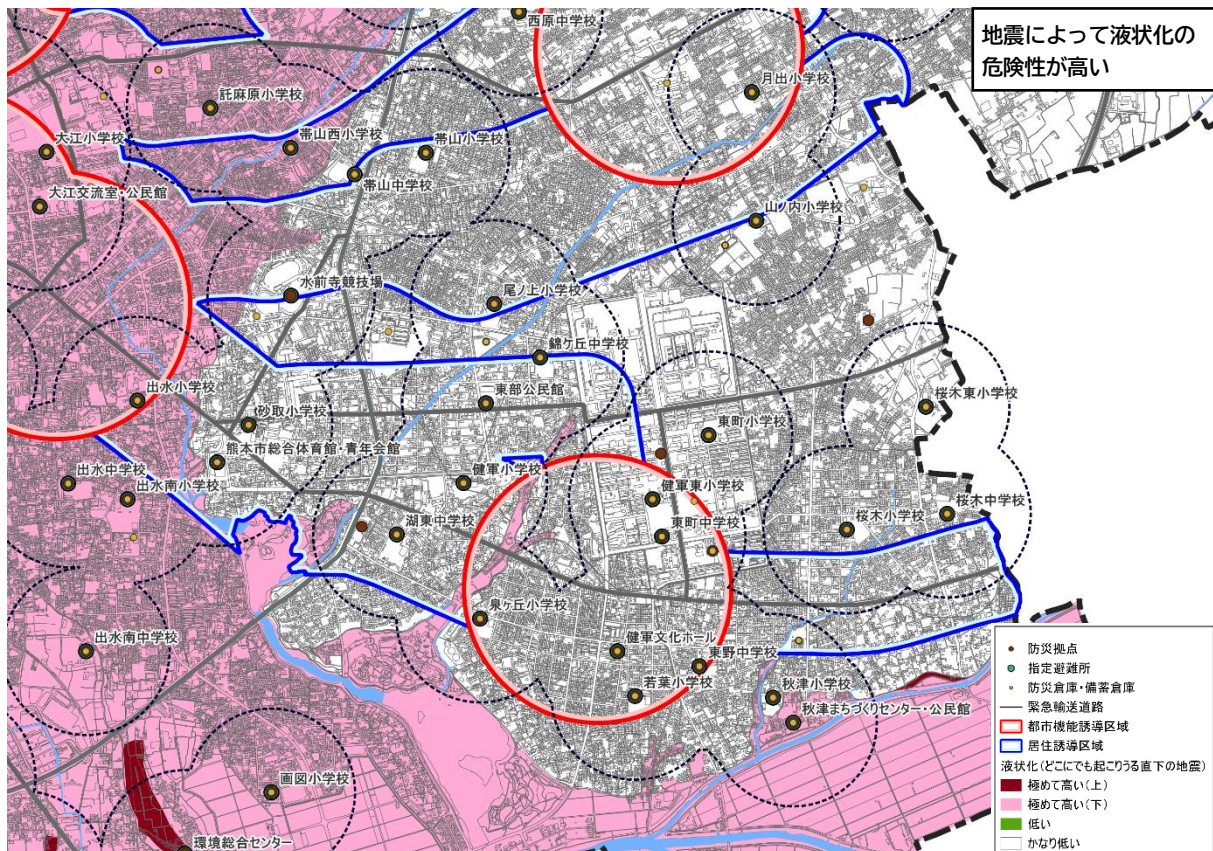
⑧ 水前寺・九品寺地区



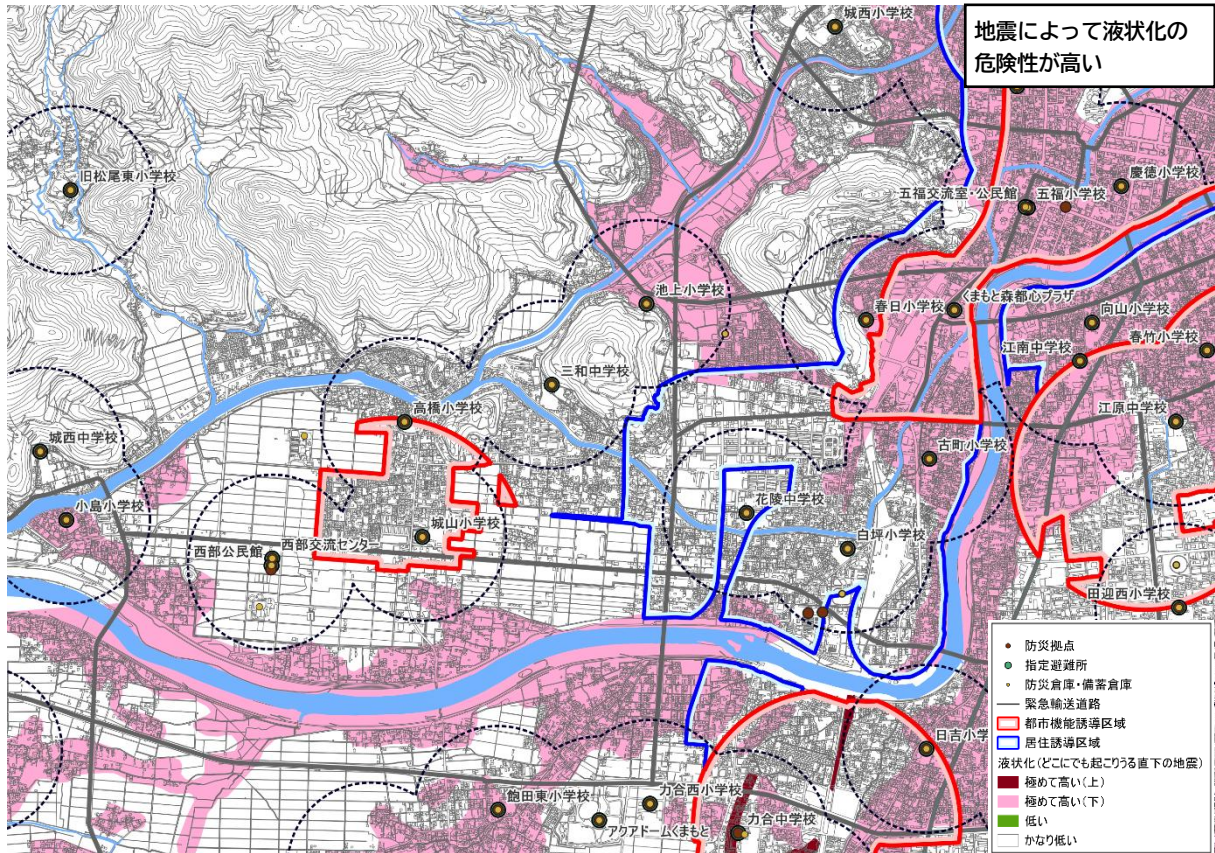
⑨ 平成・南熊本地区



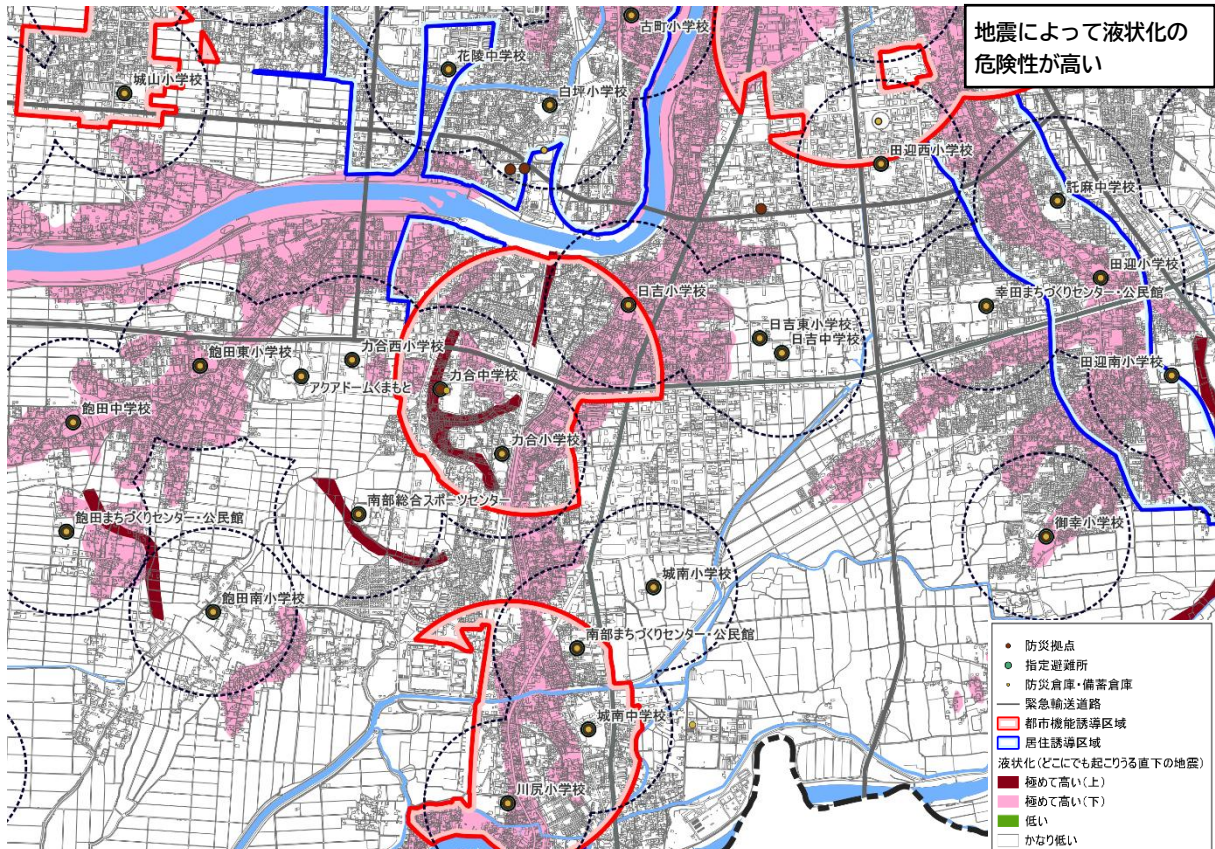
⑩ 健軍地区



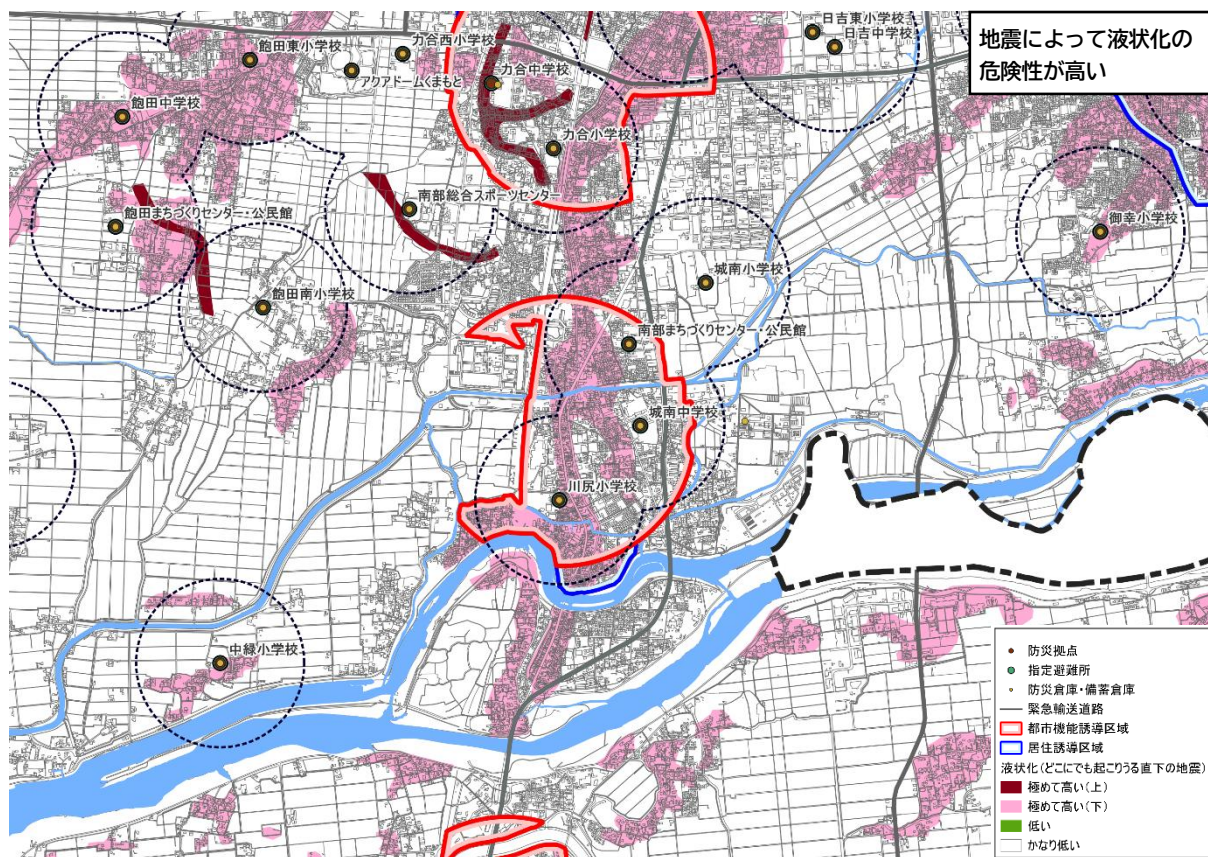
⑪ 城山地区



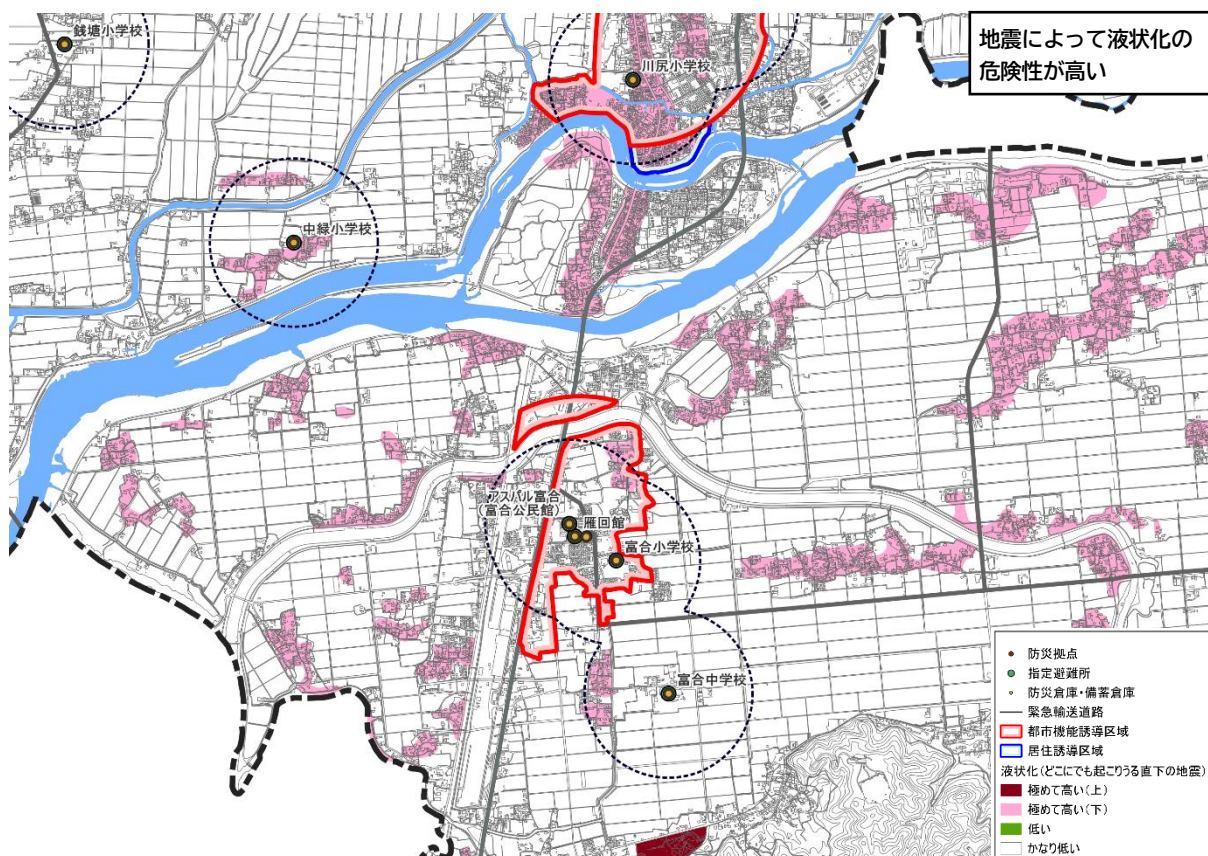
⑫ 刈草地区



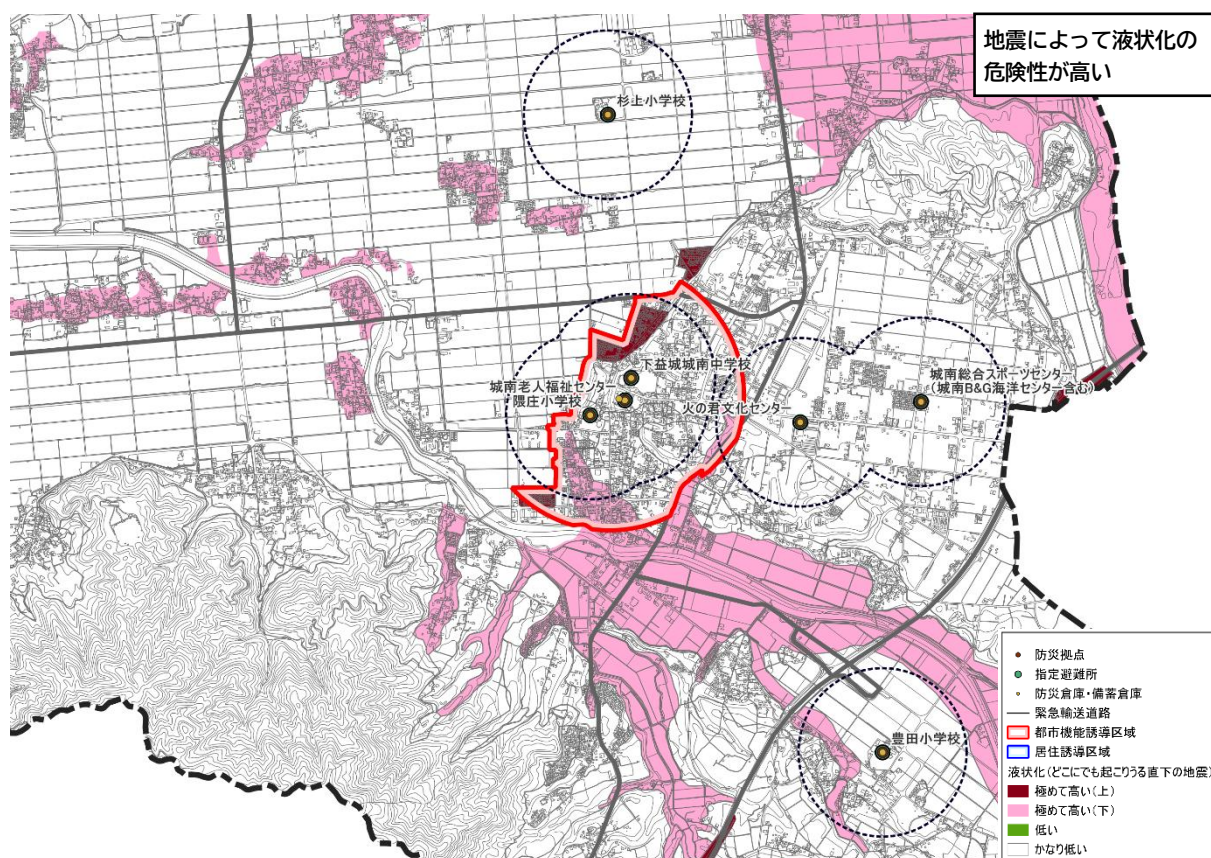
⑬ 川尻地区



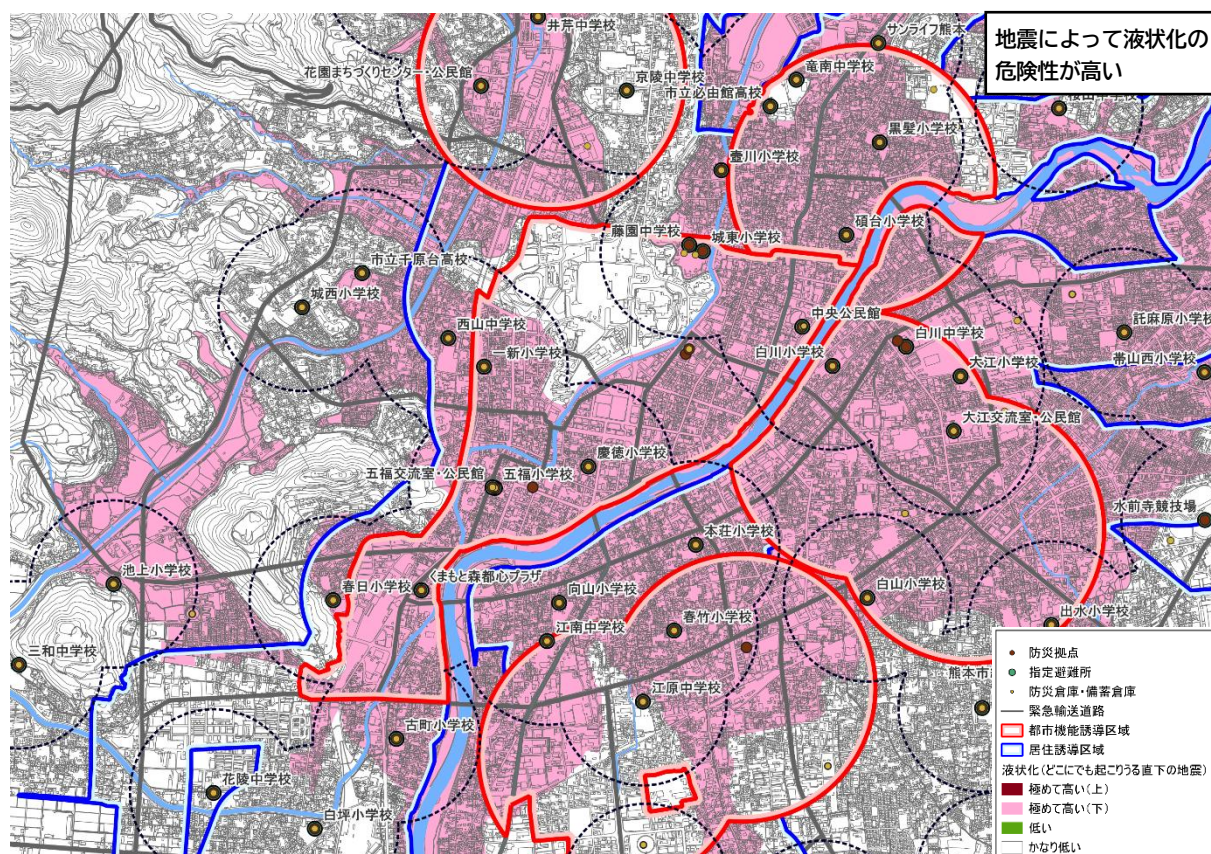
⑭ 富合地区



⑮ 城南地区

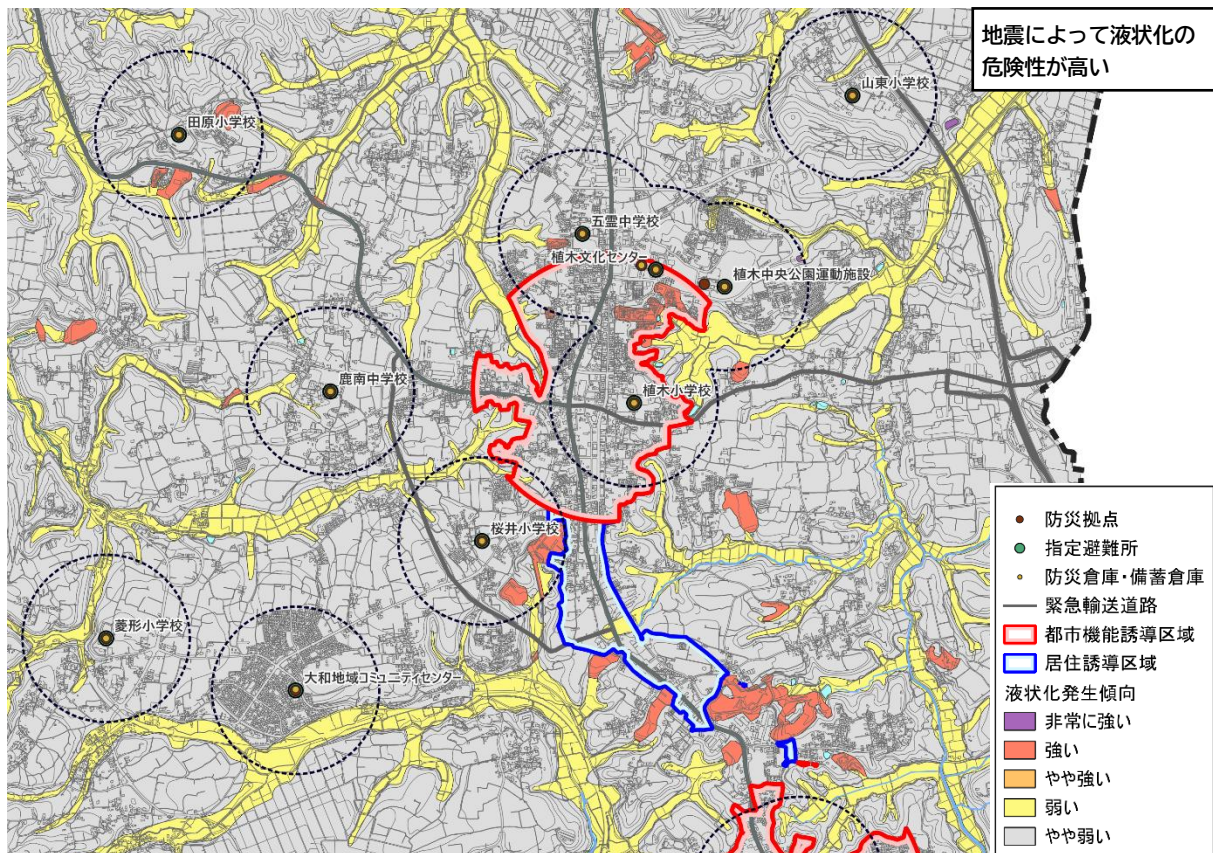


⑯ 中心市街地地区

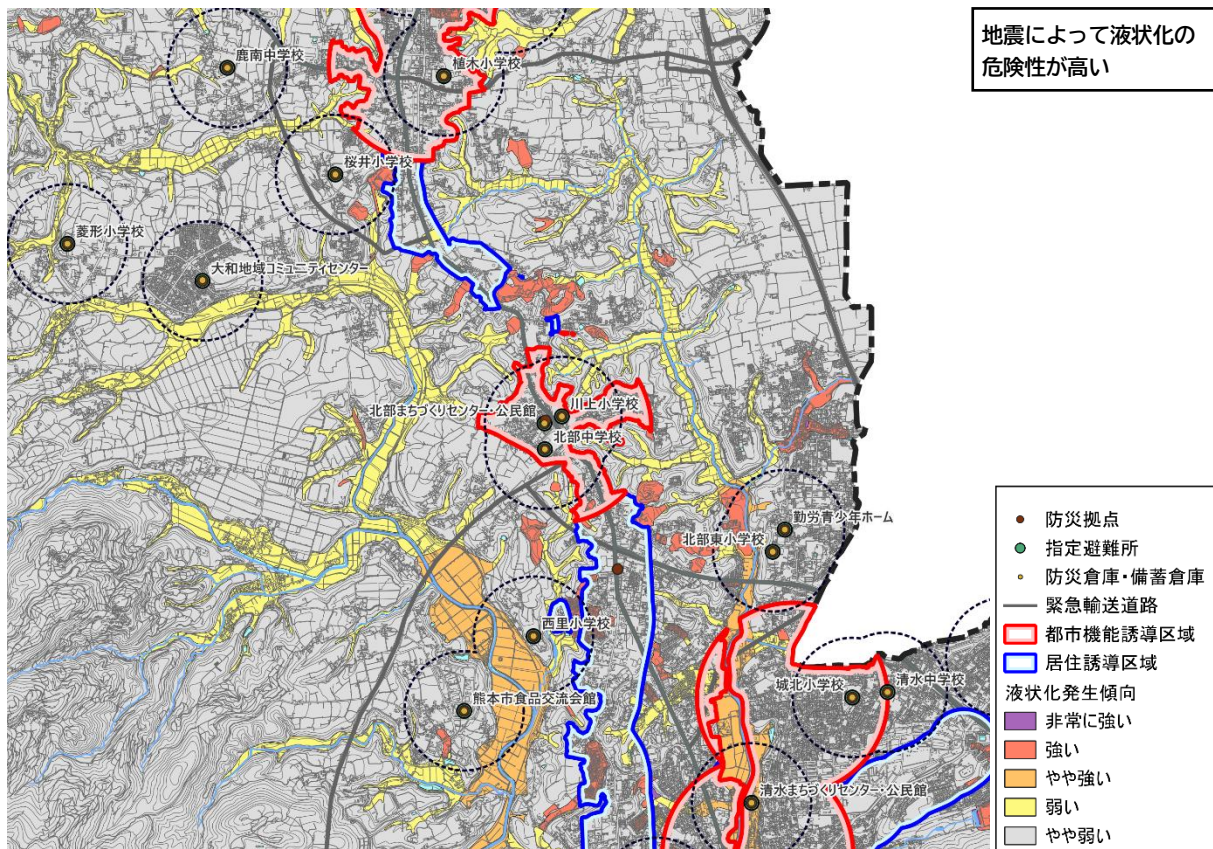


「液状化発生傾向図」の分析

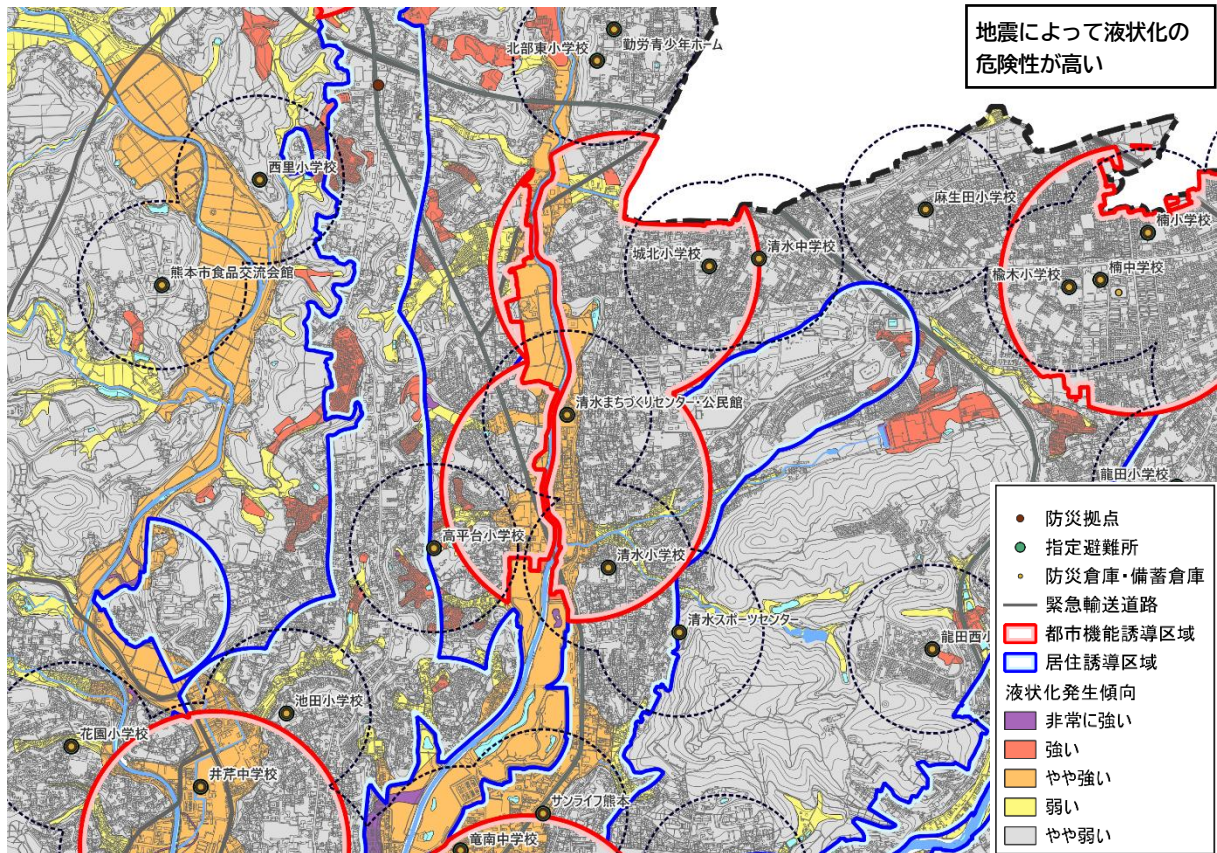
① 植木地区



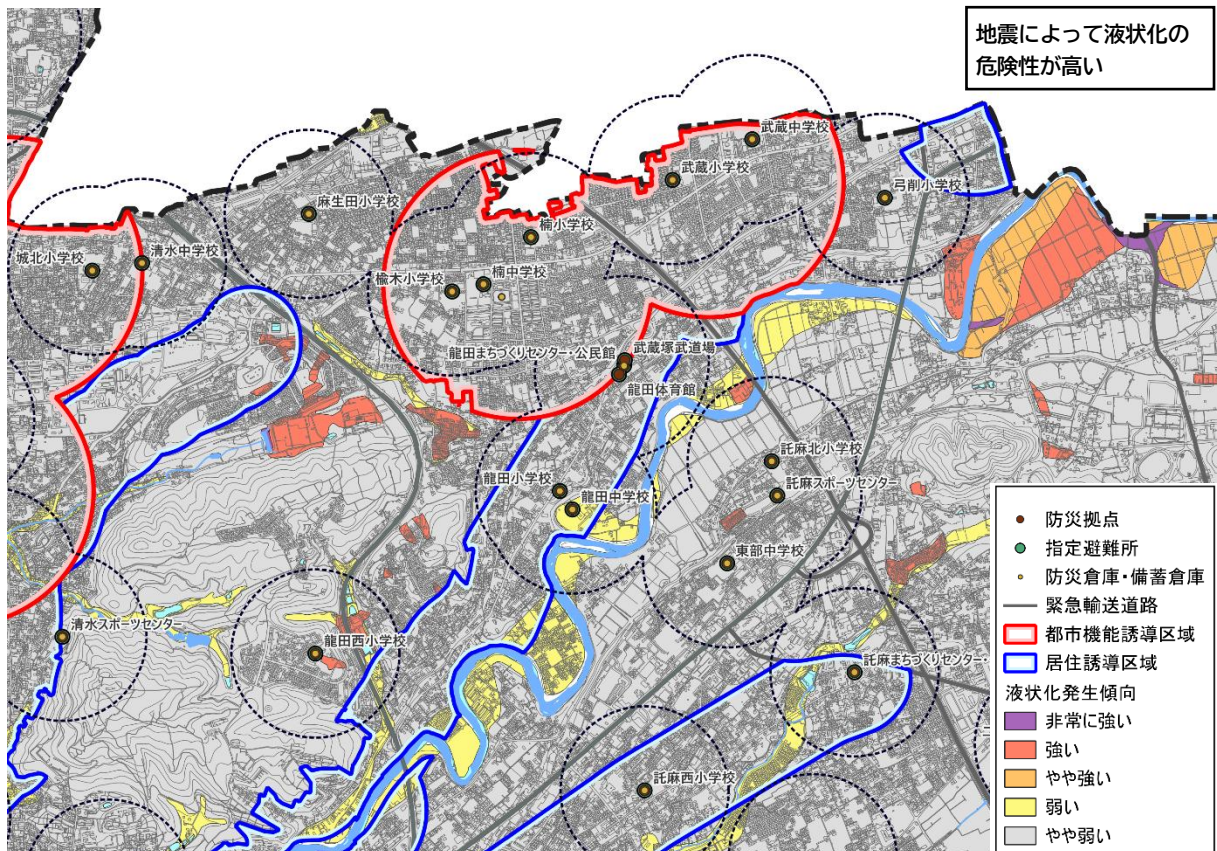
② 北部地区



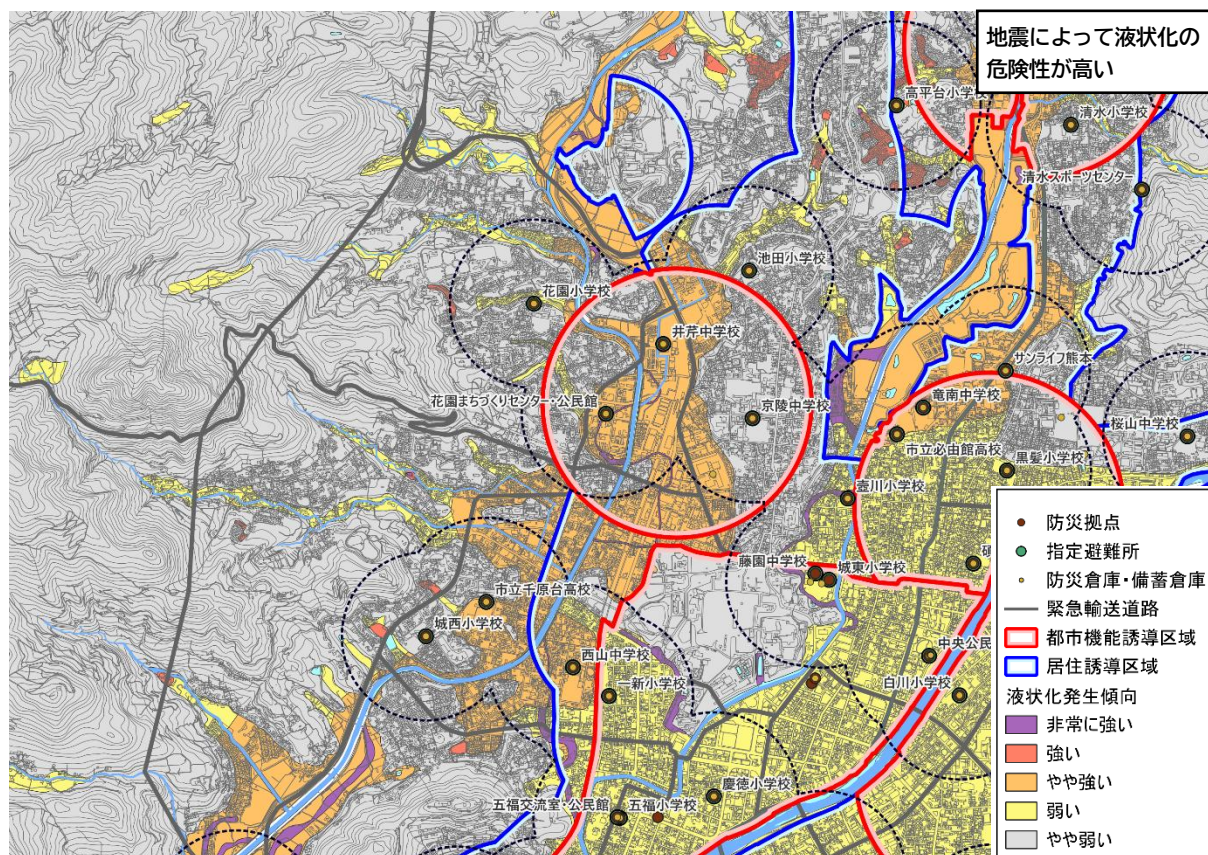
③ 八景水谷・清水亀井地区



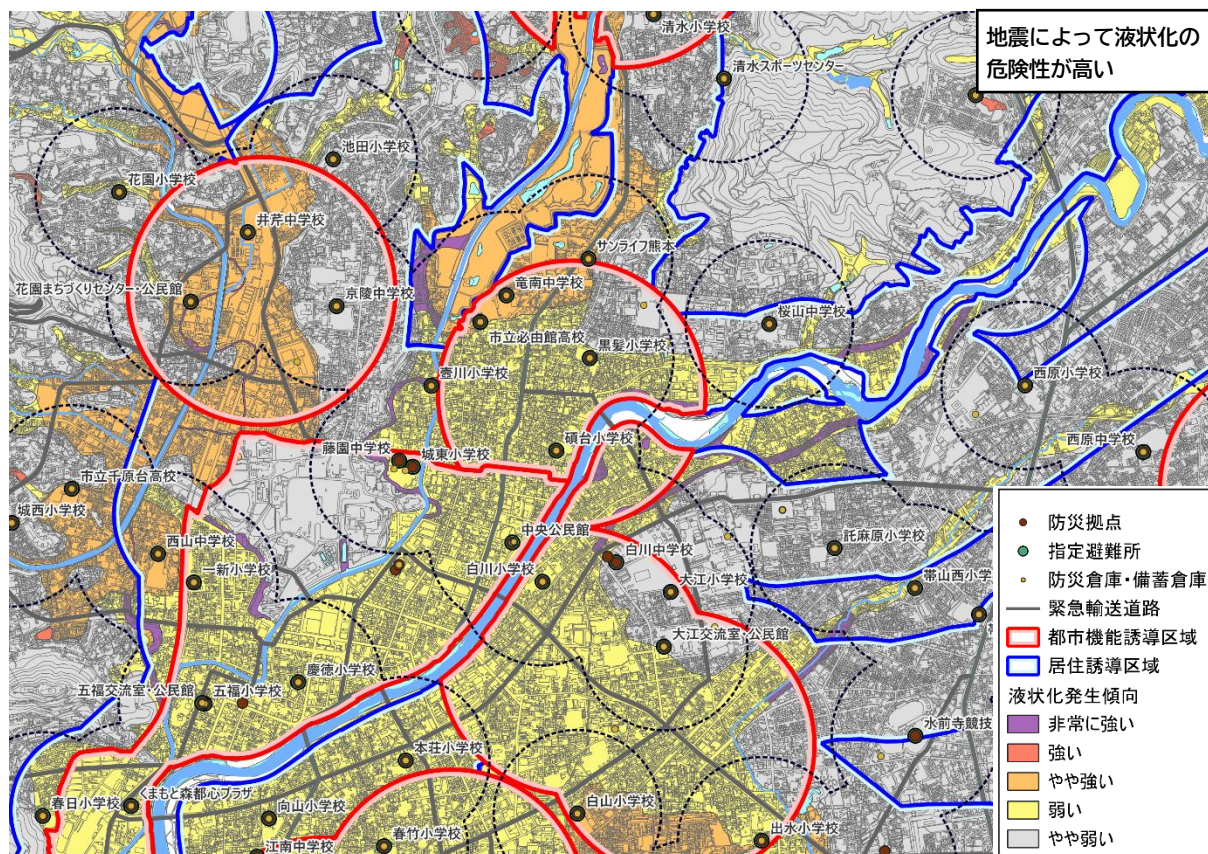
④ 楠・武蔵ヶ丘地区



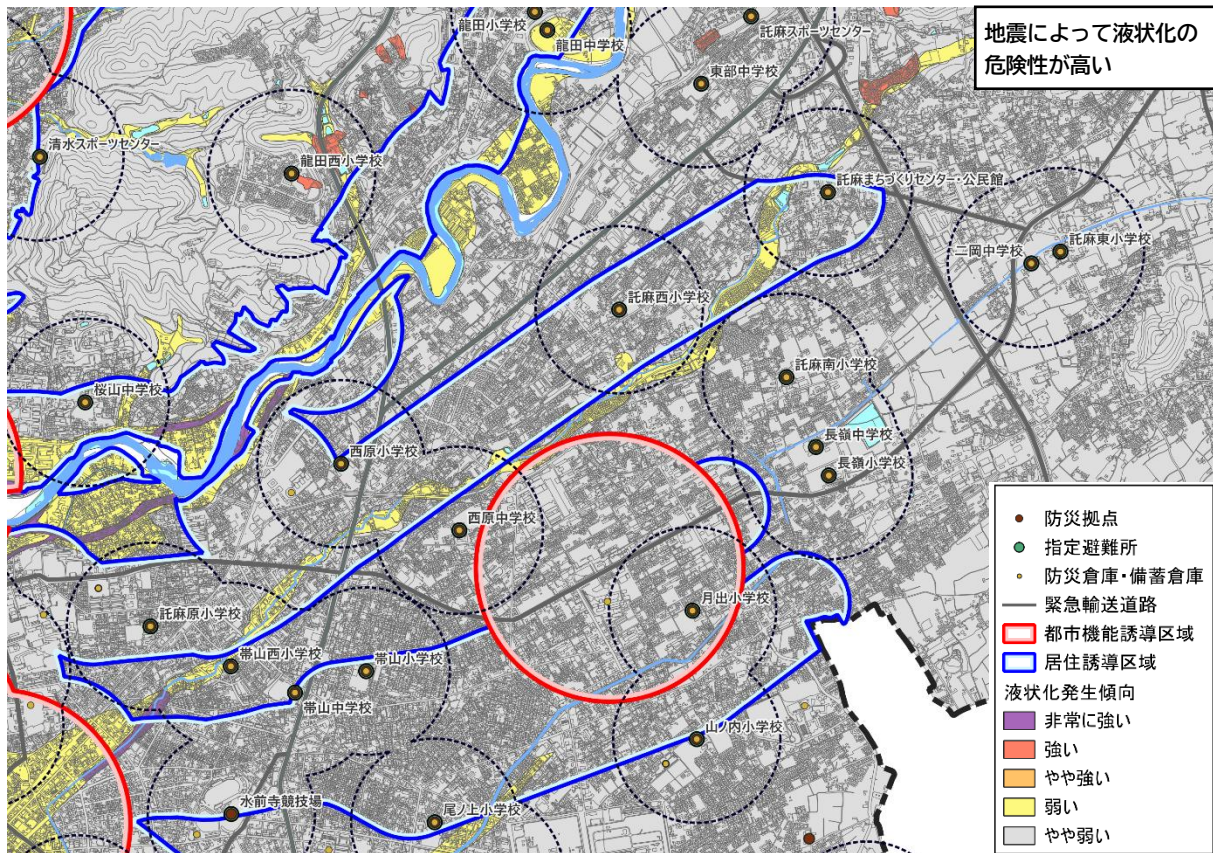
⑤ 上熊本地区



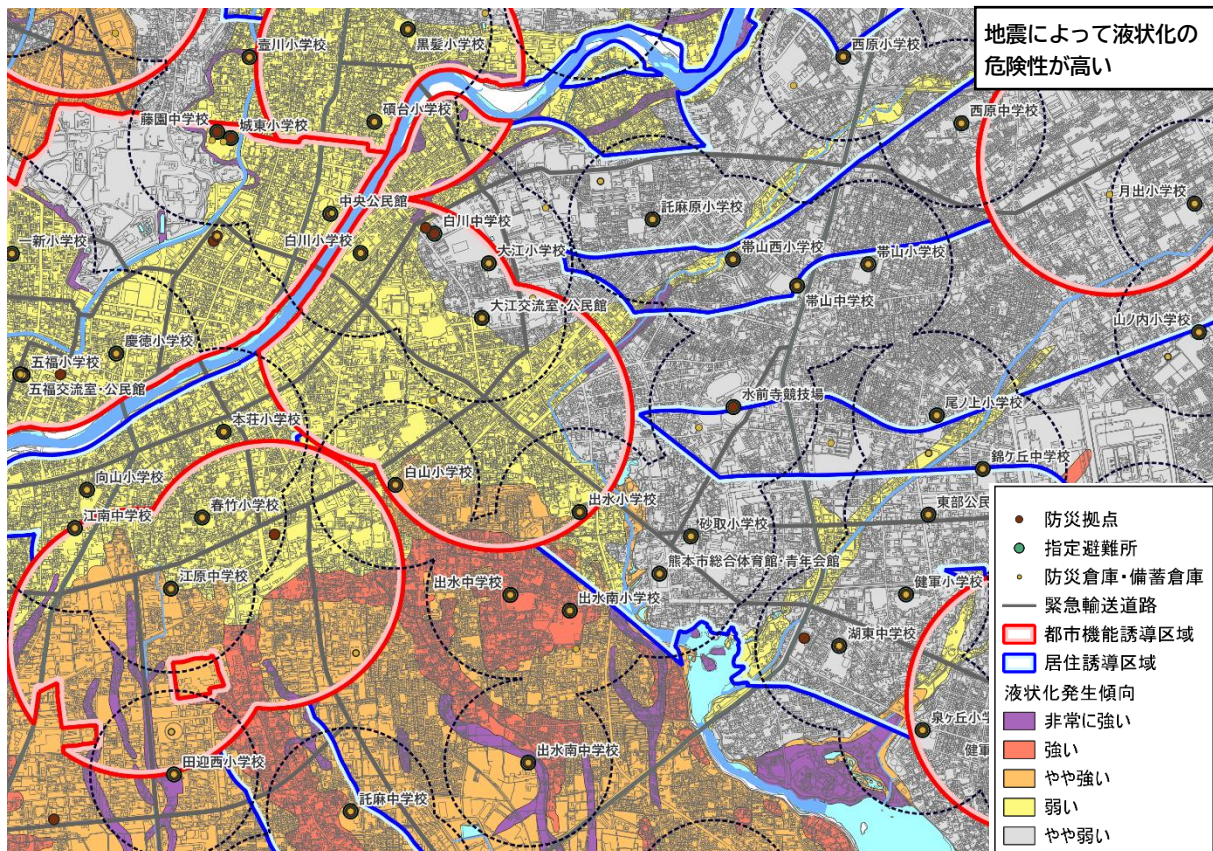
⑥ 子飼地区



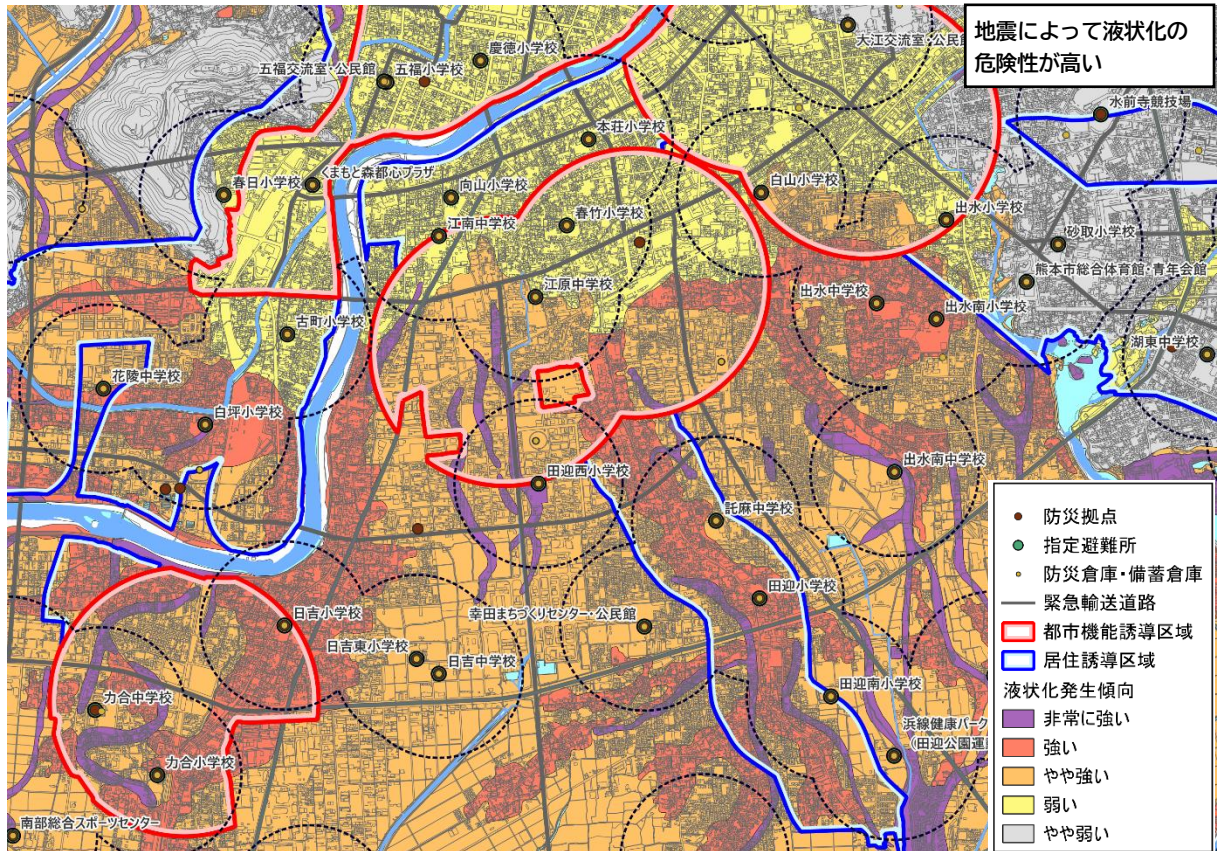
⑦ 長嶺地区



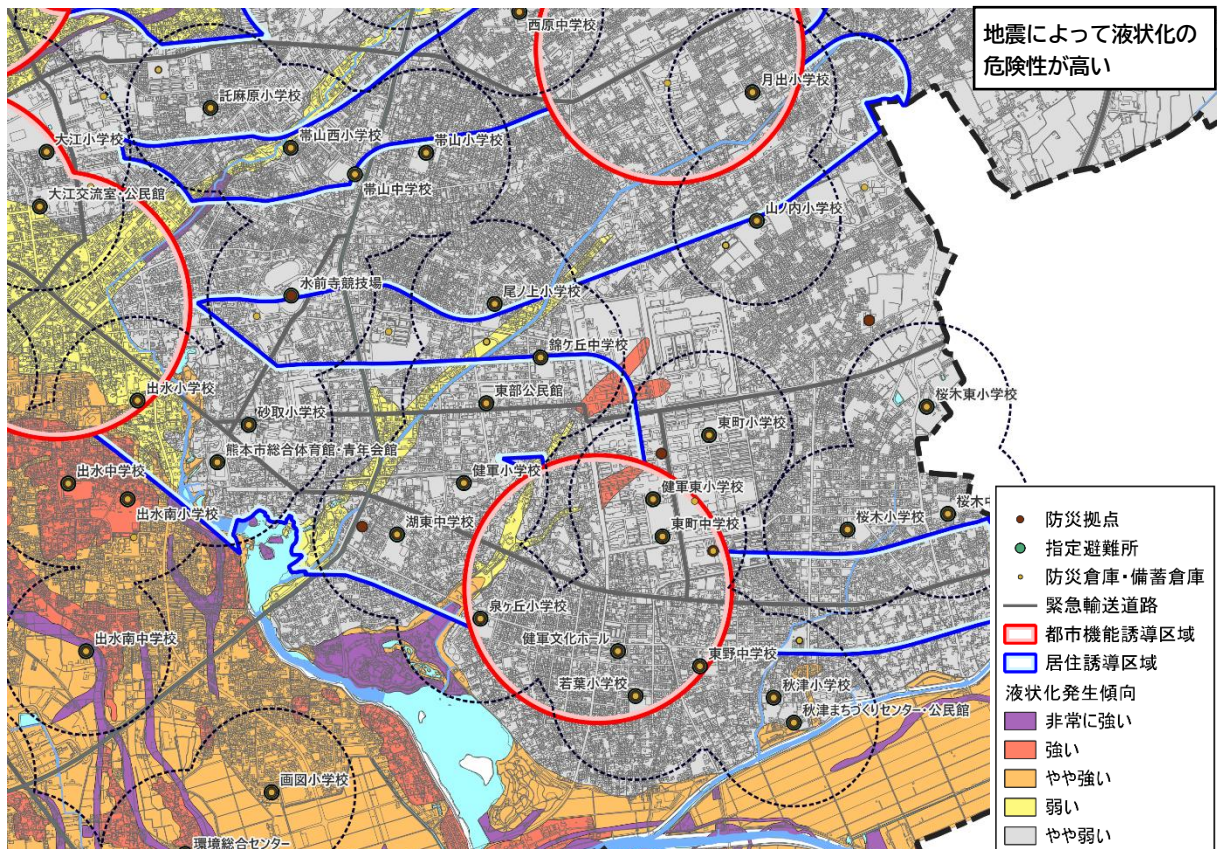
⑧ 水前寺・九品寺地区



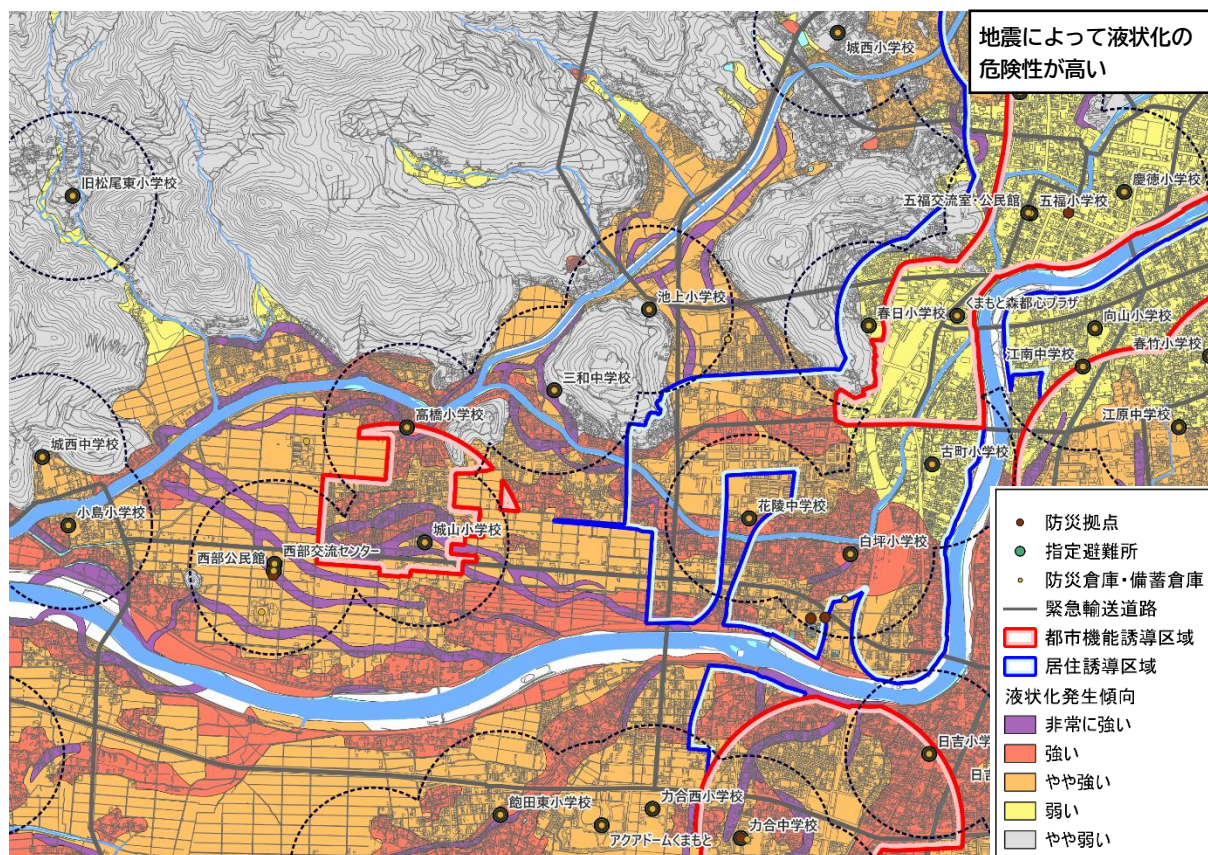
⑨ 平成・南熊本地区



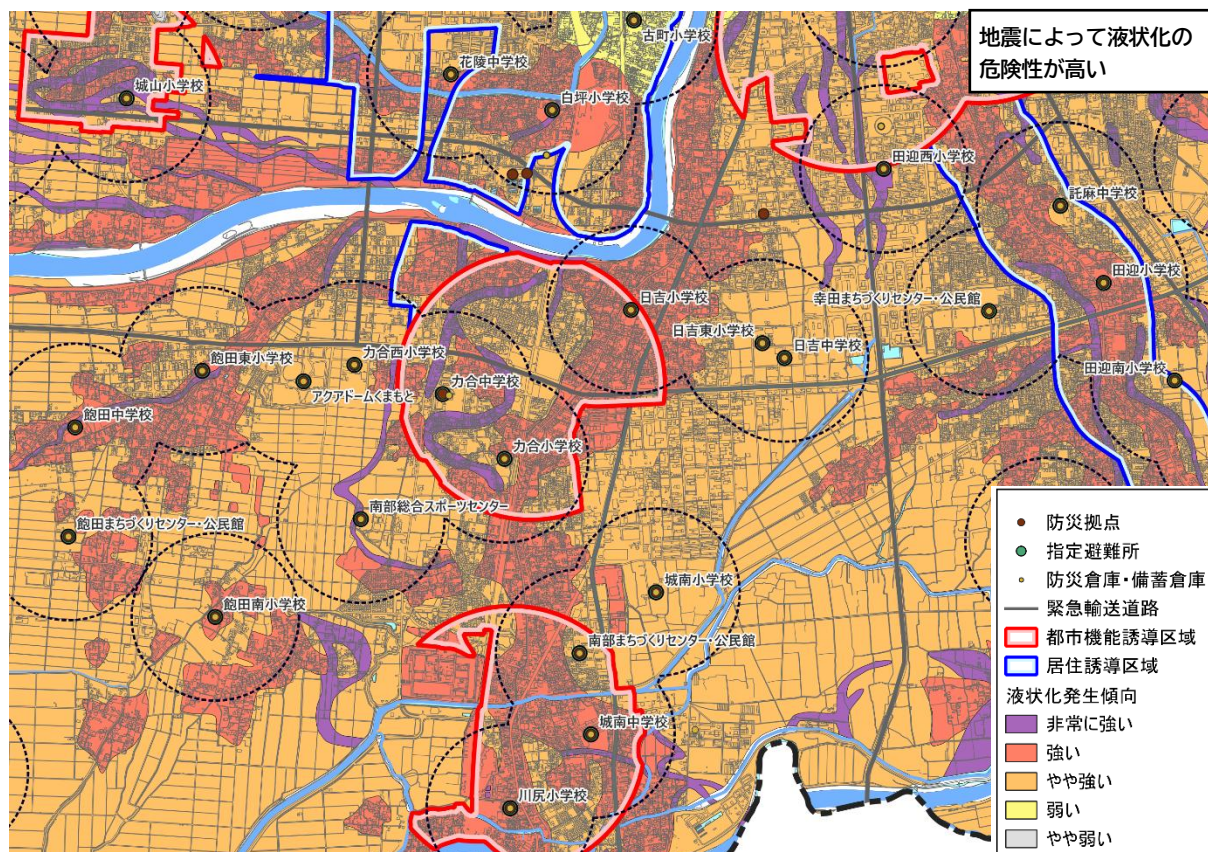
⑩ 健軍地区



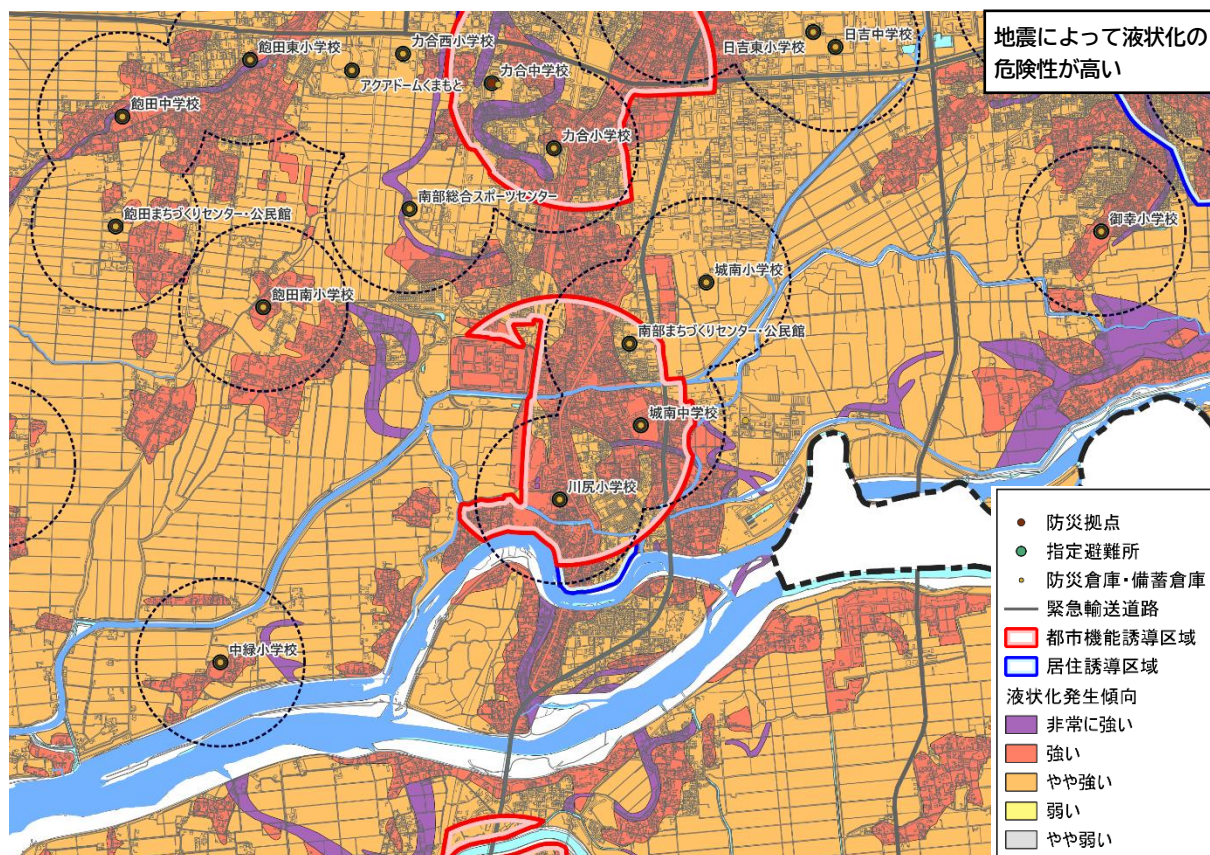
⑪ 城山地区



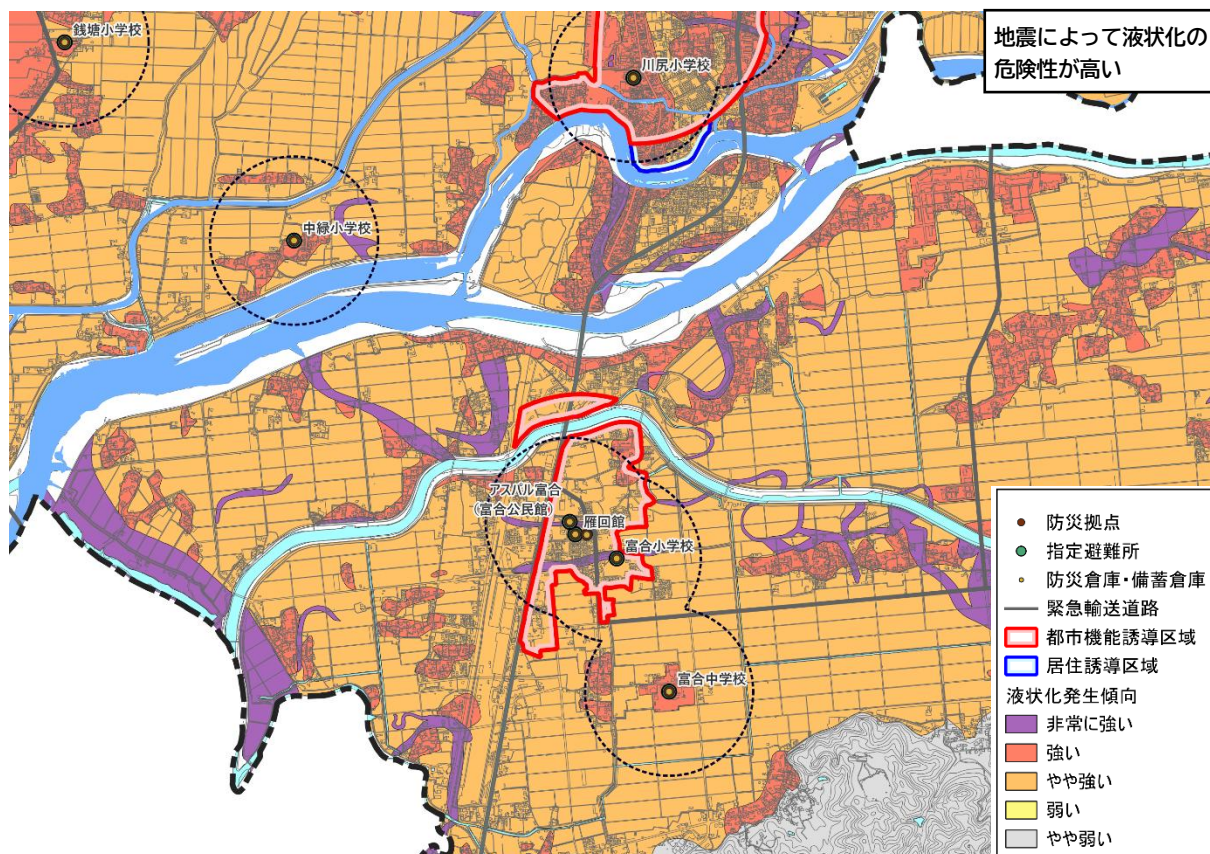
⑫ 刈草地区



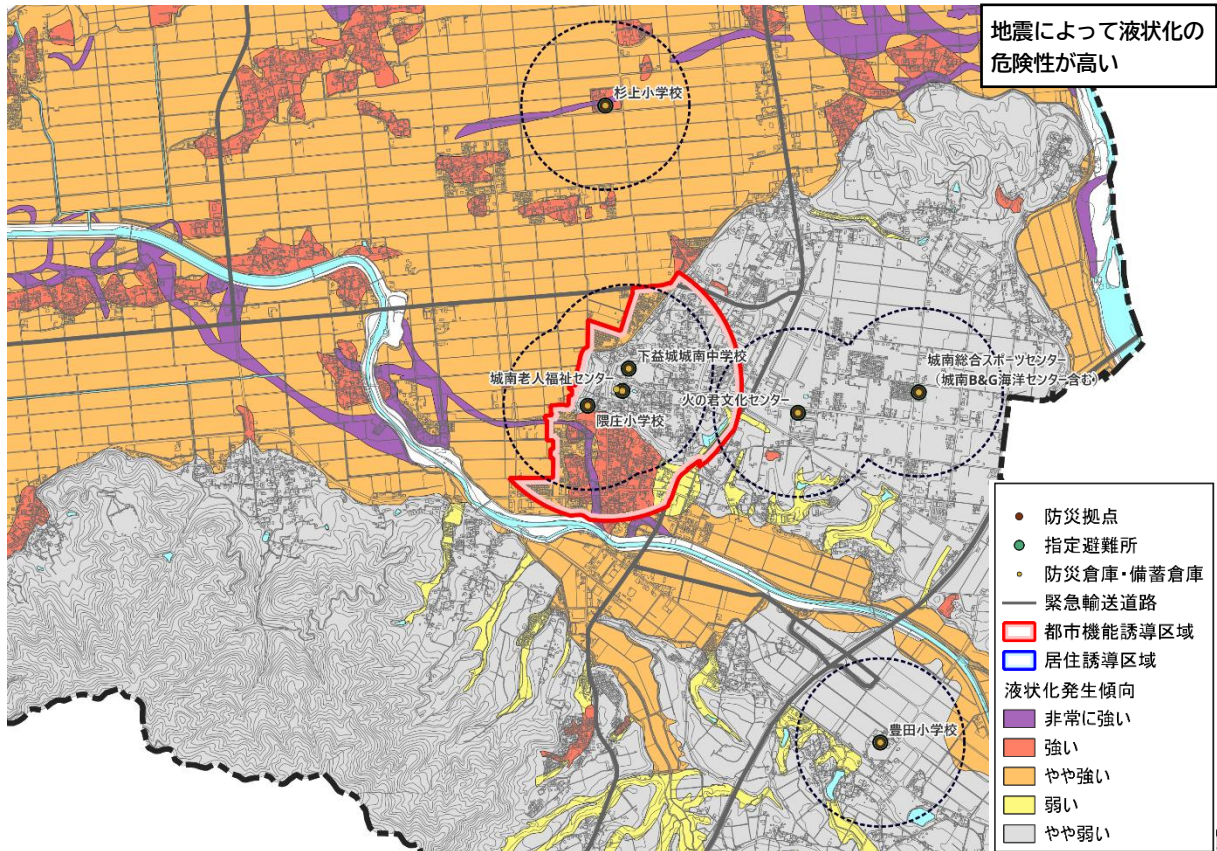
⑬ 川尻地区



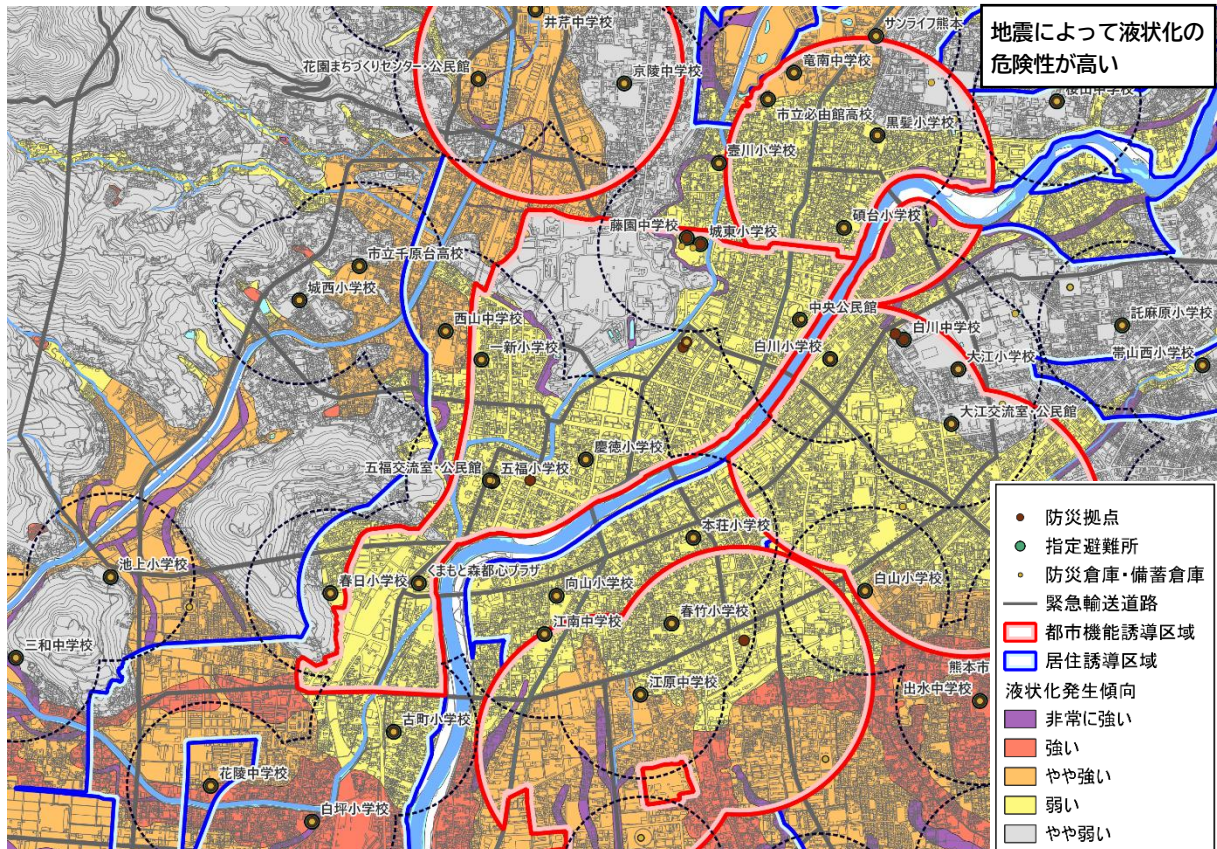
⑭ 富合地区



⑮ 城南地区

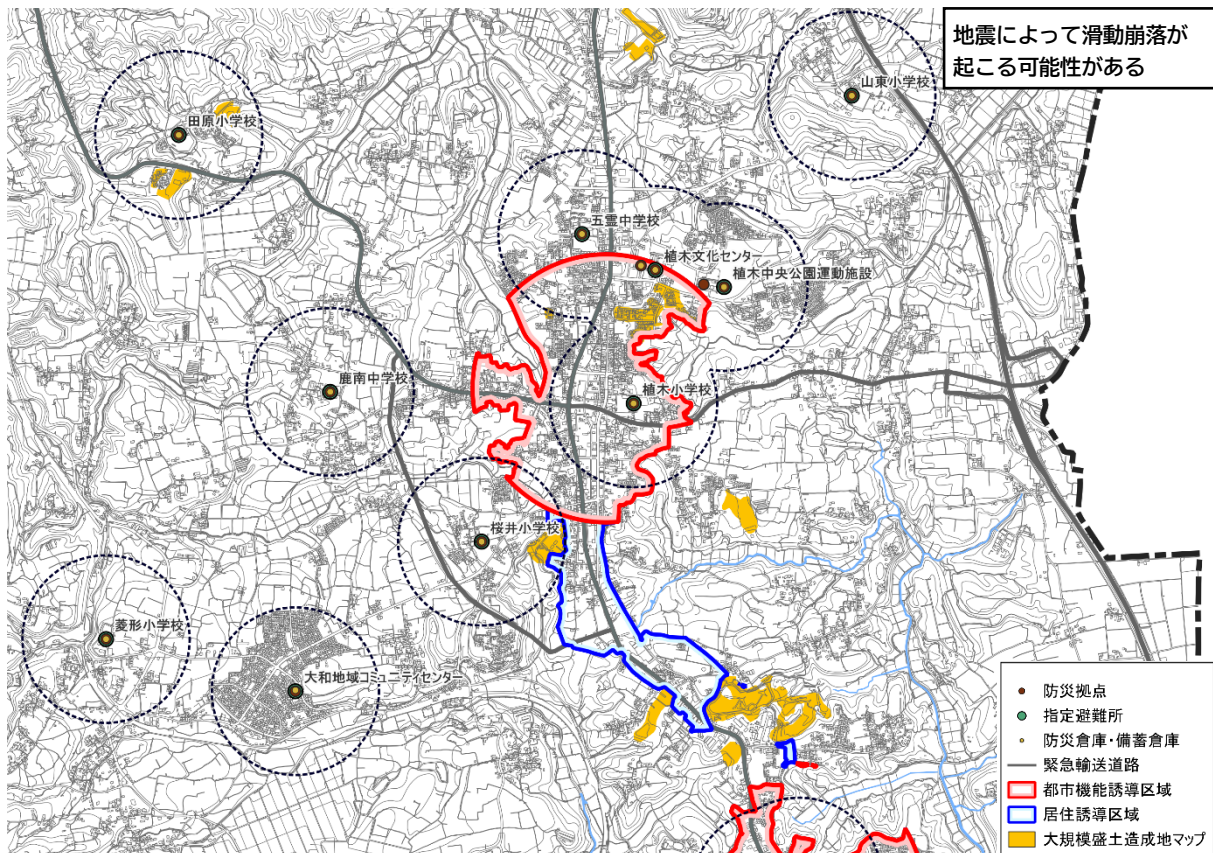


⑯ 中心市街地地区

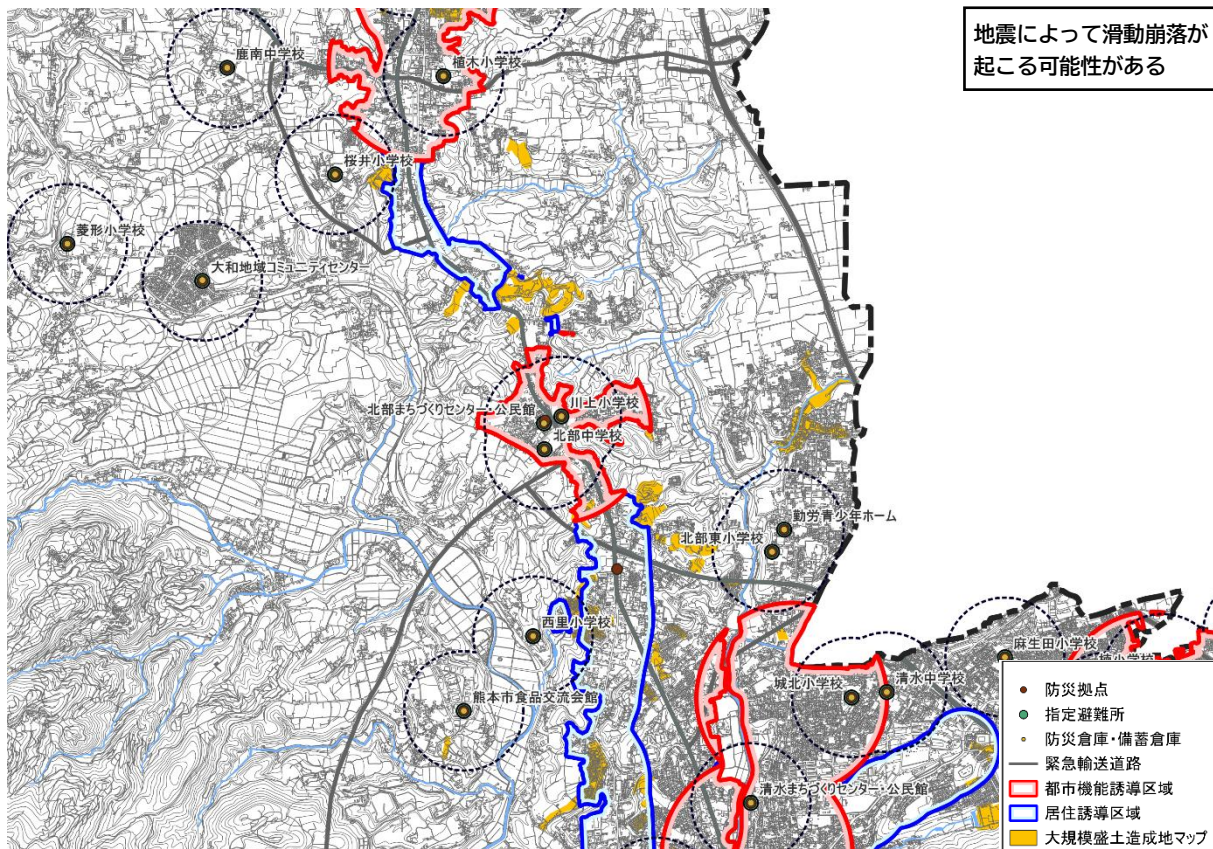


「大規模盛土造成地」の分析

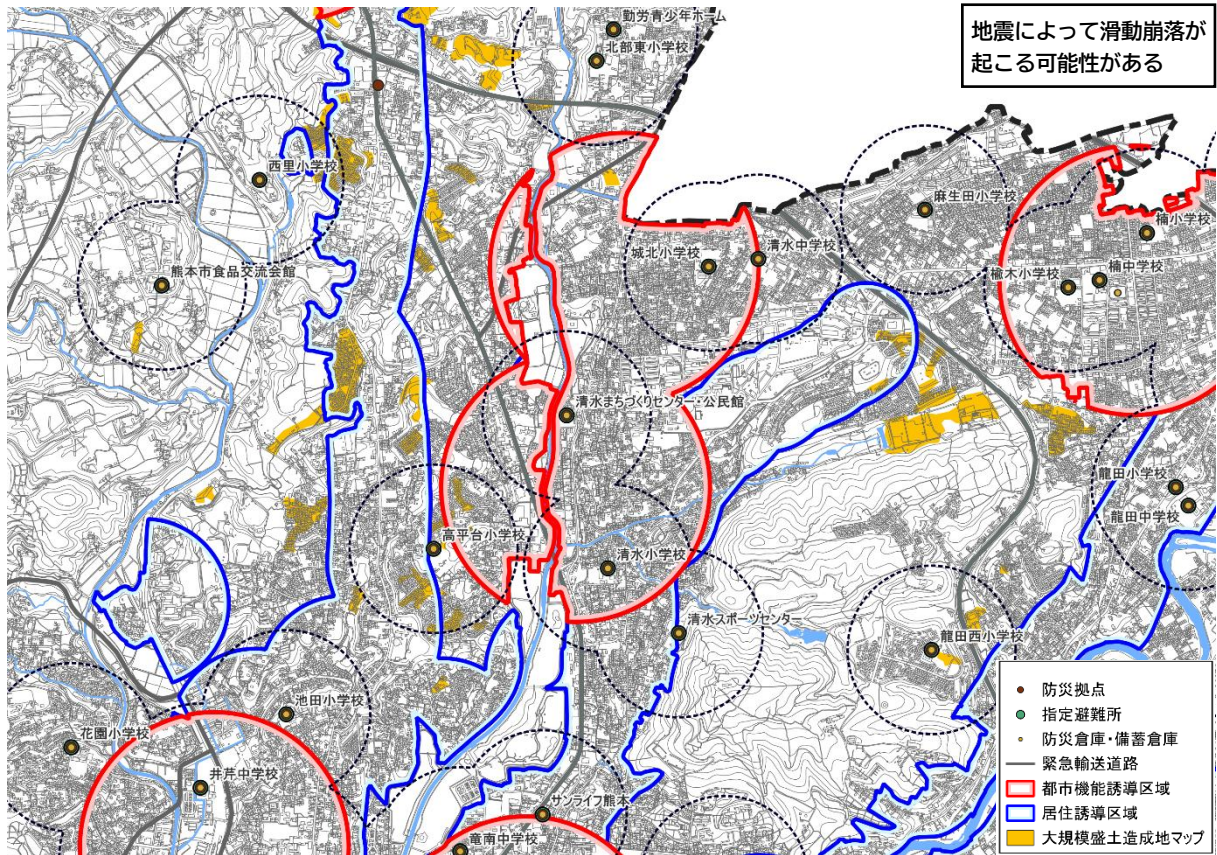
① 植木地区



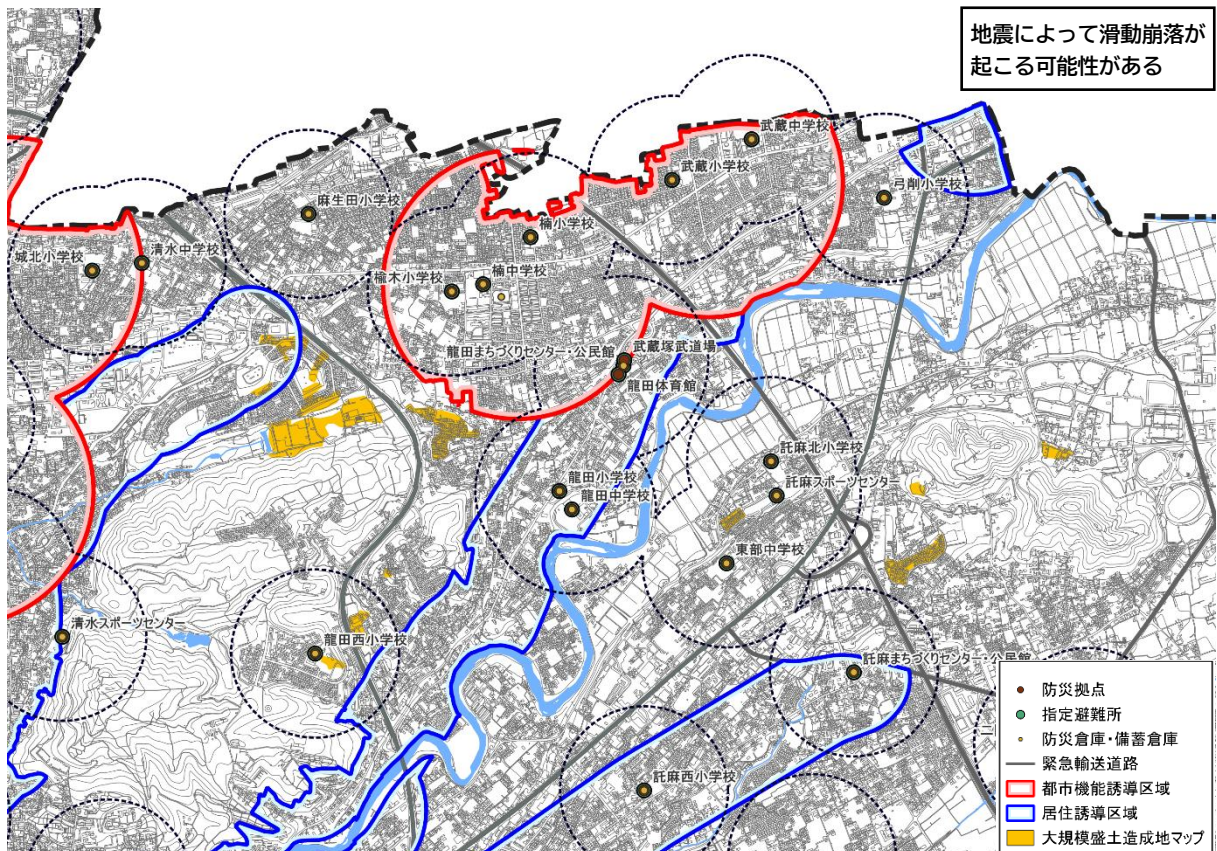
② 北部地区



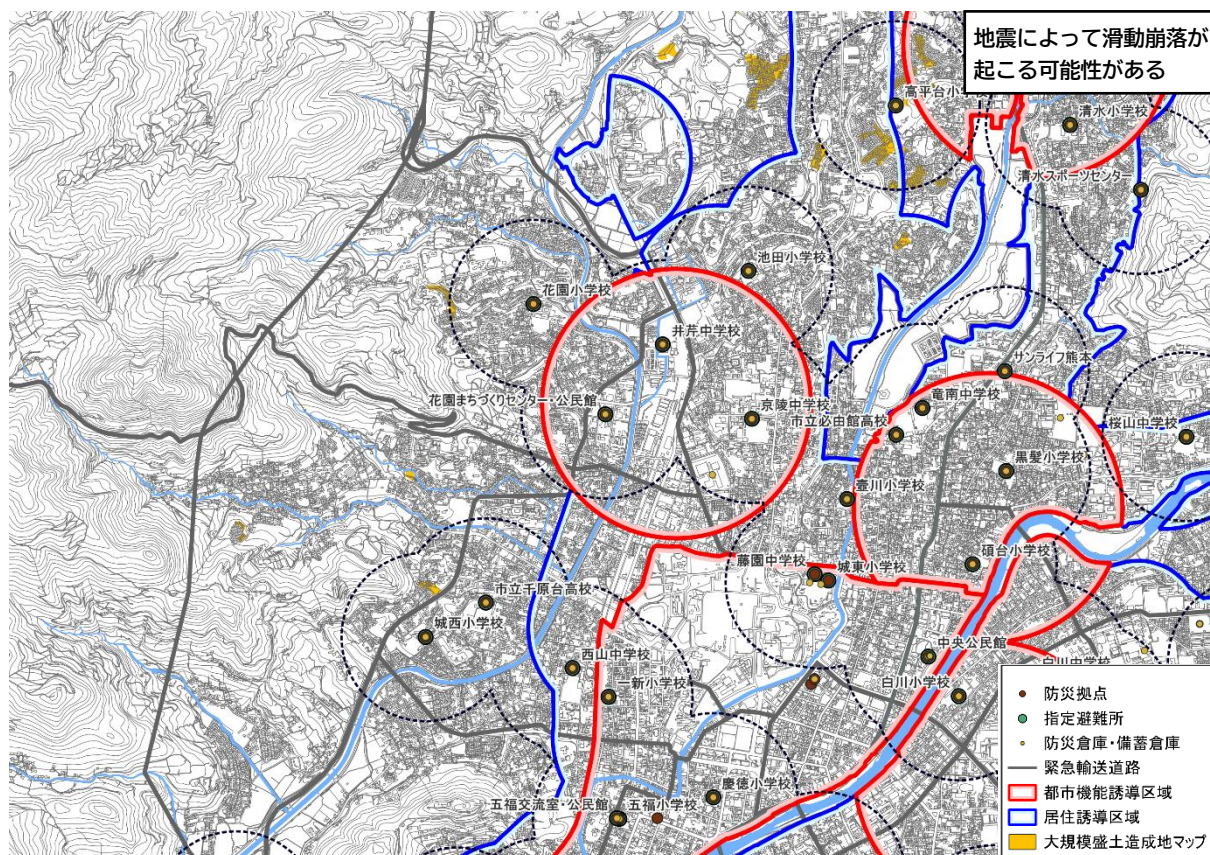
③ 八景水谷・清水亀井地区



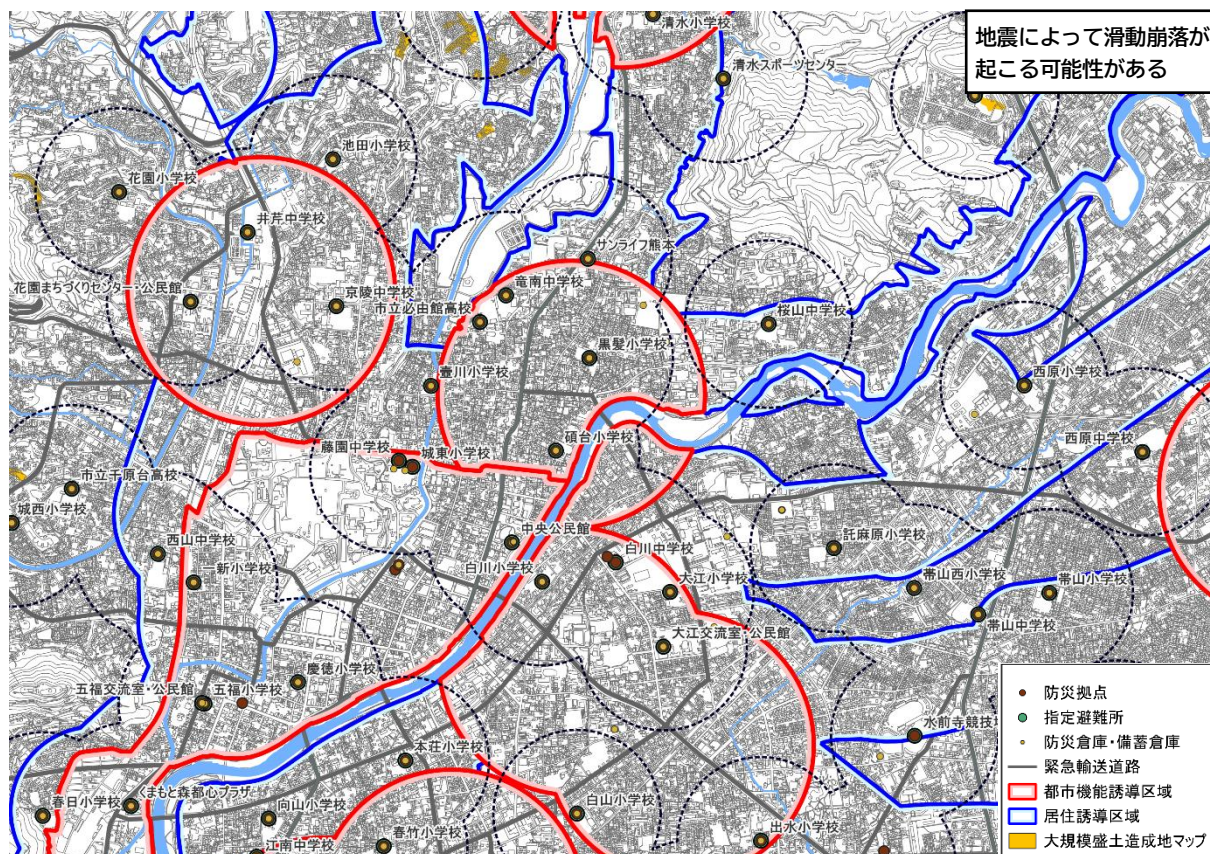
④ 楠・武蔵ヶ丘地区



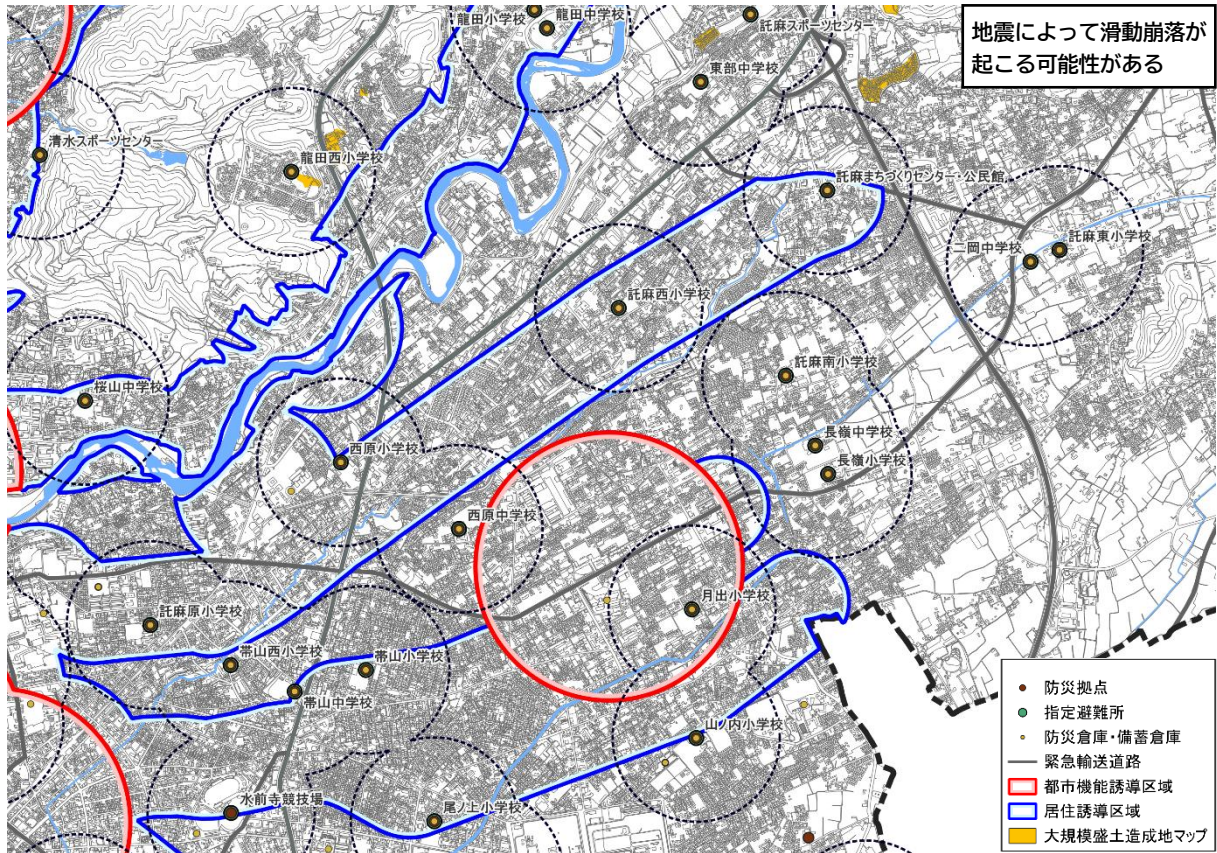
⑤ 上熊本地区



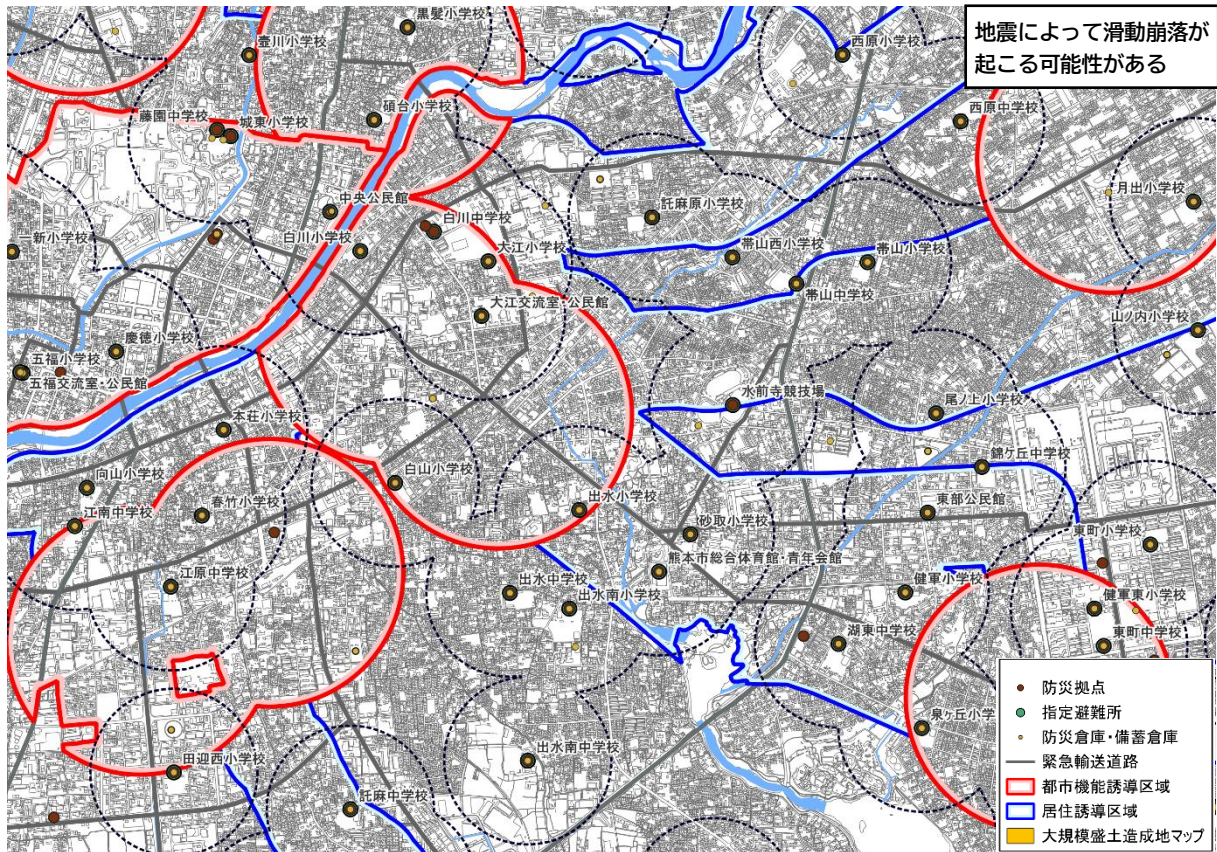
⑥ 子飼地区



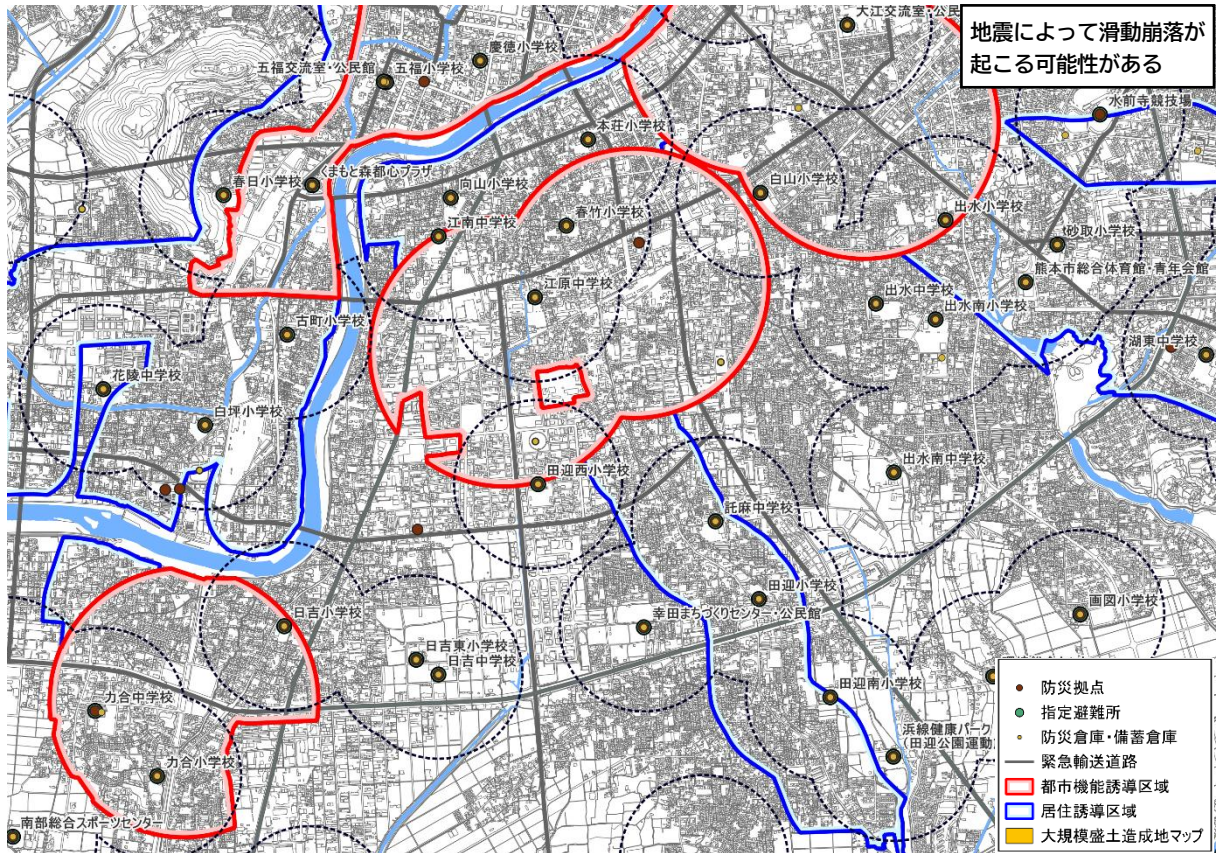
⑦ 長嶺地区



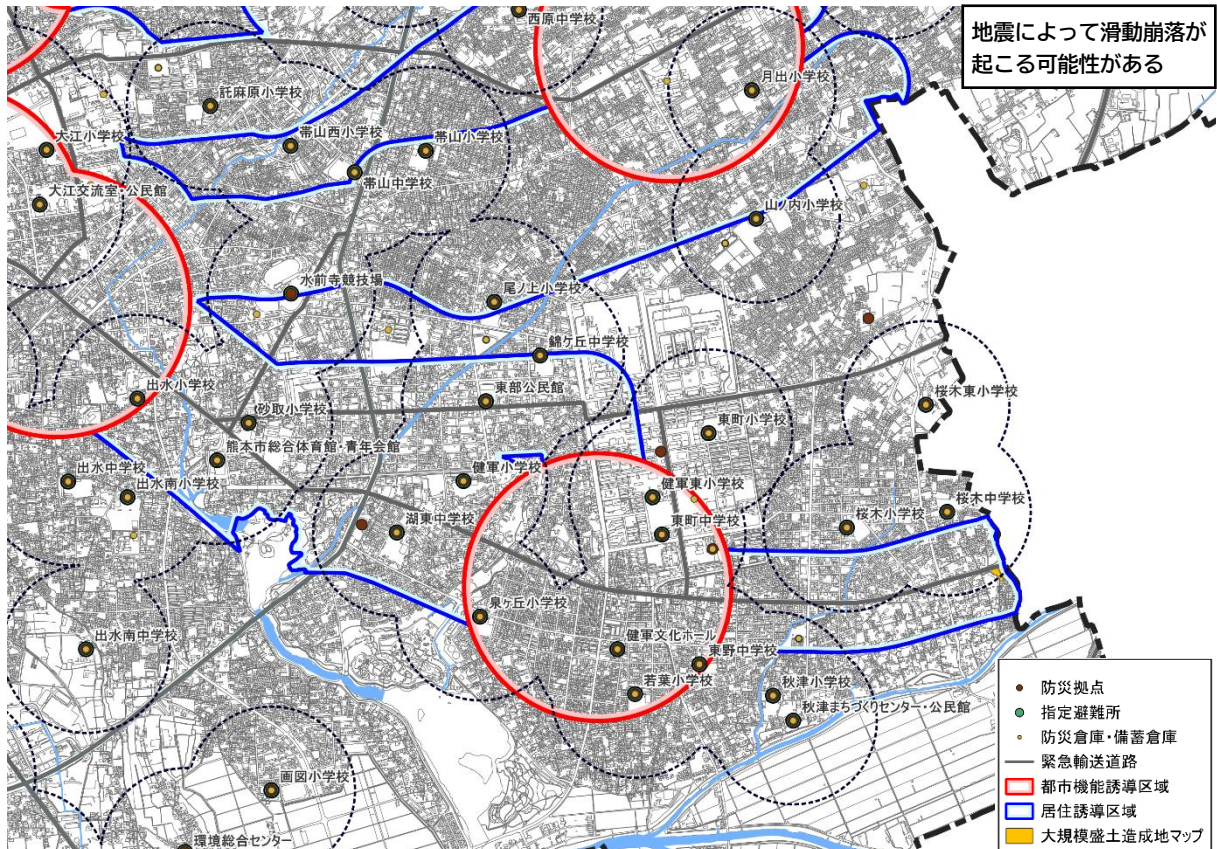
⑧ 水前寺・九品寺地区



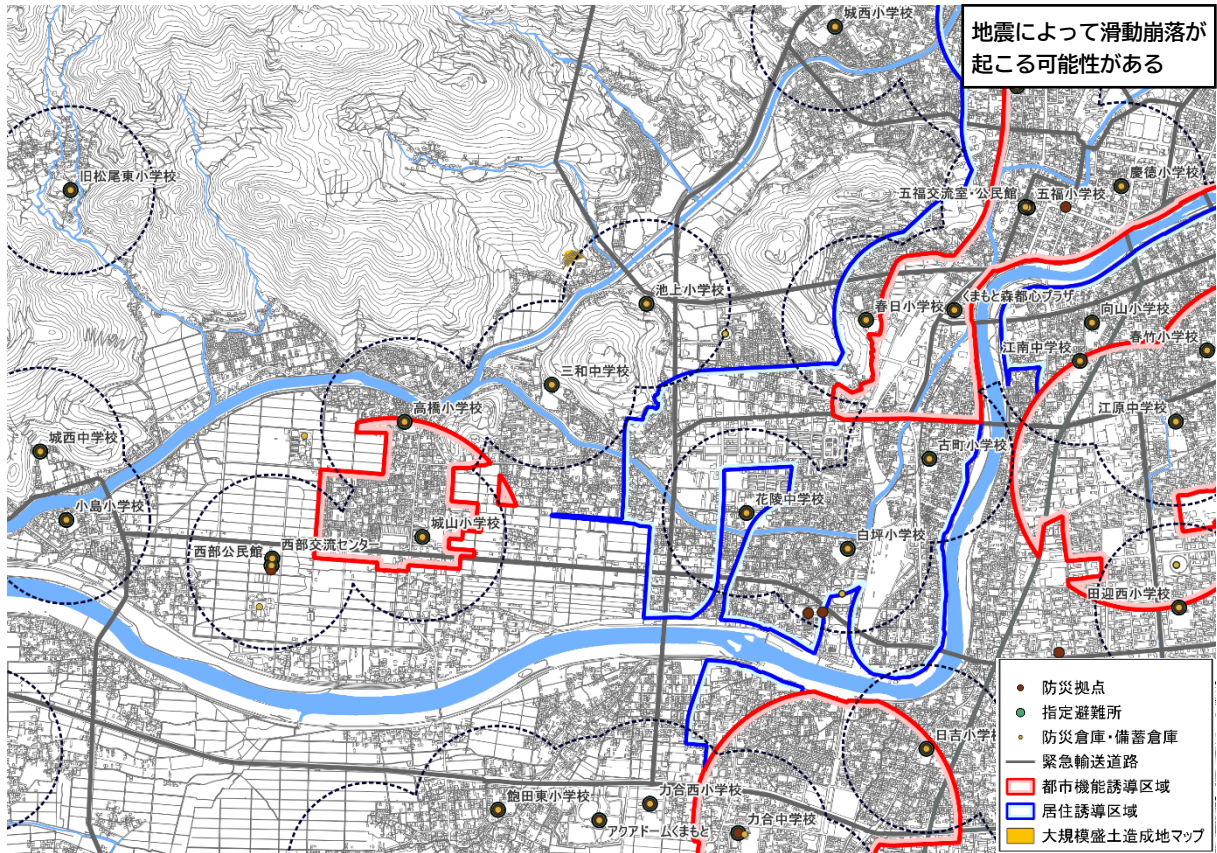
⑨ 平成・南熊本地区



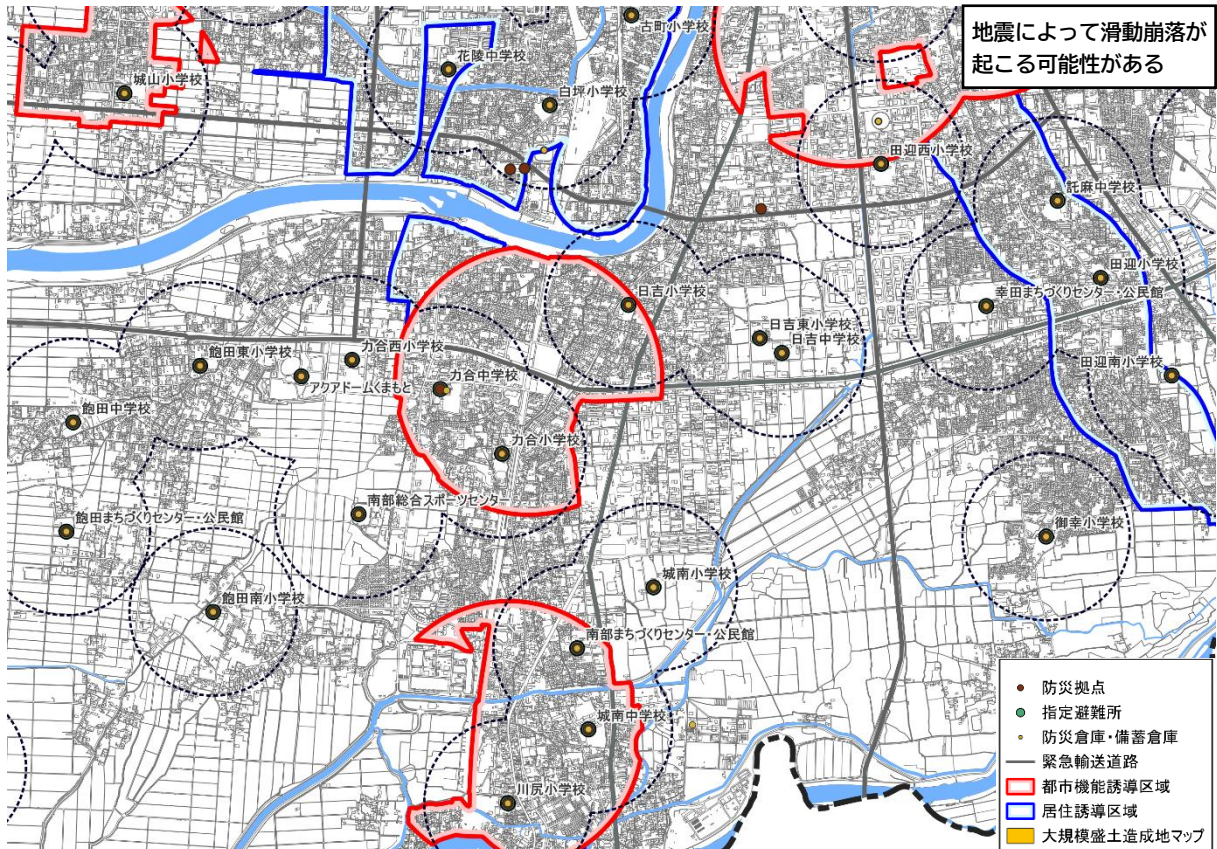
⑩ 健軍地区



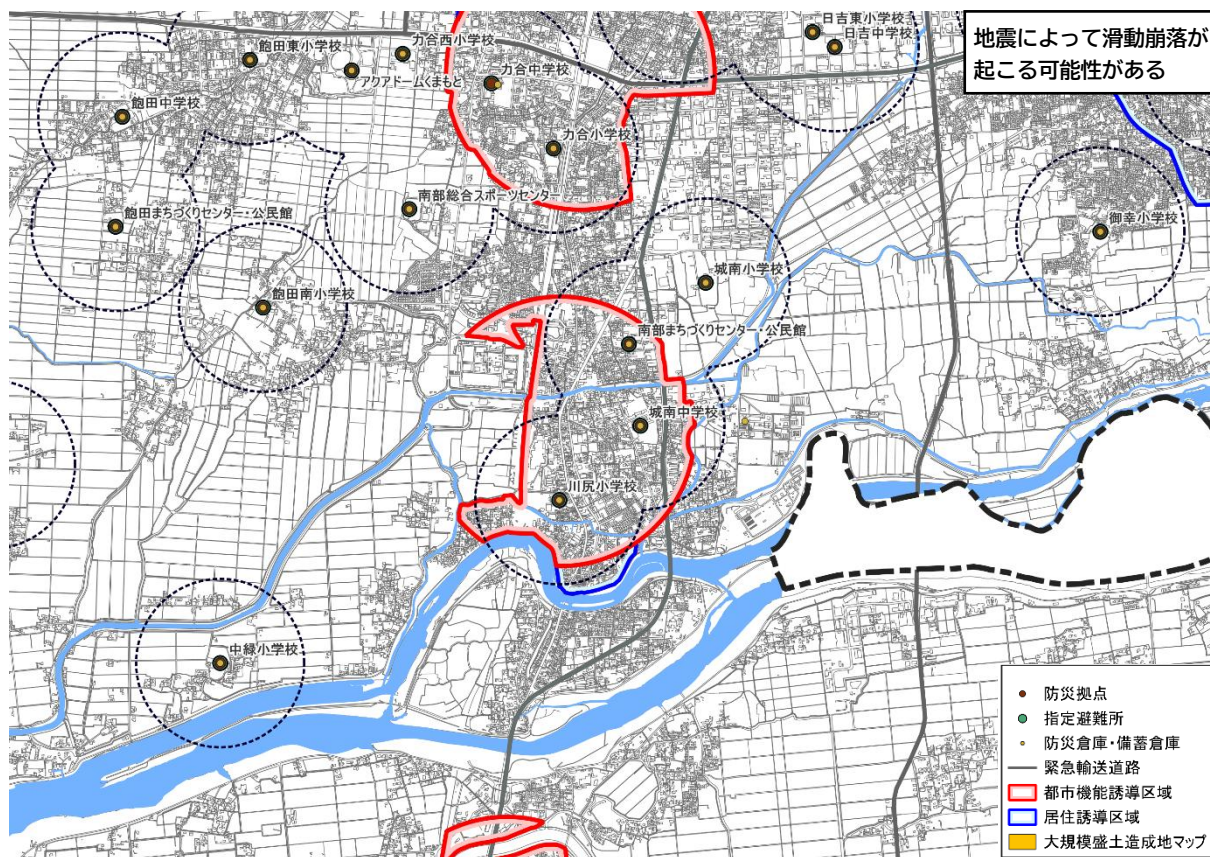
⑪ 城山地区



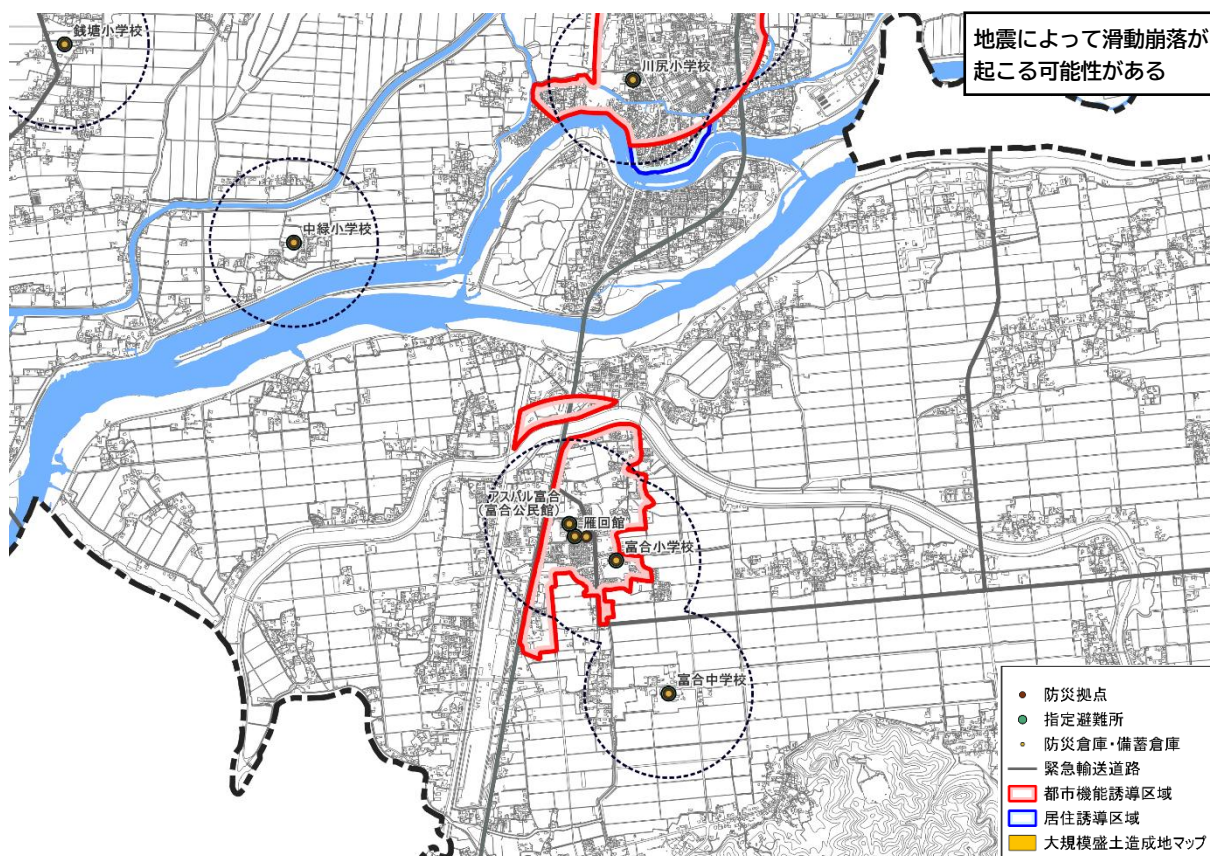
⑫ 刈草地区



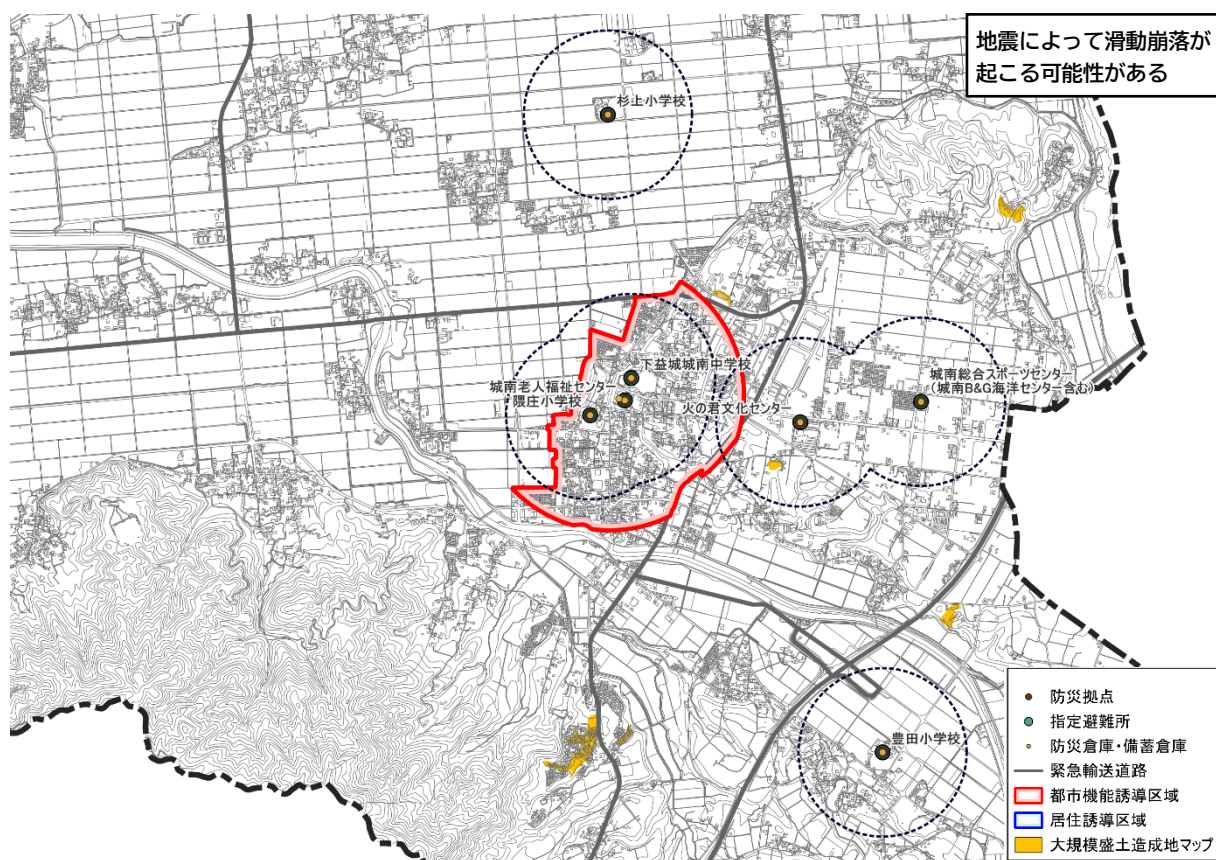
⑬ 川尻地区



⑭ 富合地区



⑮ 城南地区



⑯ 中心市街地地区

