

True Disaster Resilience Lies in Community Bonds Built on Mutual Aid and Support

The Kumamoto Earthquake a disaster on a scale never seen before in recorded history, with two earthquakes registering a maximum seismic intensity of 7, five registering intensity 6, and over 4,000 aftershocks. This disaster inflicted immense damage on our city alone, claiming 90 lives, displacing up to 110,000 people, and damaging 130,000 homes. Furthermore, this disaster revealed the limits of public assistance by the government, as a series of unforeseen events occurred one after another, including damage to Kumamoto Castle, the city's symbol, the suspension of operations at the City Hospital, confusion at evacuation shelters, and the spread of misinformation.

Under these circumstances, mutual assistance within communities and individual self-help played a vital role, reinforcing the realization that the bonds of communities that help and support one another constitute true disaster resilience. With this greatest lesson of the Kumamoto Earthquake firmly in mind, the city has vigorously promoted initiatives in cooperation with local communities and related organizations, continuously upgrading its disaster preparedness from multiple perspectives.

As nationwide large-scale and wide-area disasters are expected to continue occurring, we will use this ten-year milestone as an opportunity to further accelerate the creation of a safe, secure, disaster-resilient, and adaptable city. At the same time, by passing on the lessons of the earthquake to other municipalities, we will lead efforts to enhance disaster response capabilities across Kyushu and throughout Japan.

Major Support and Assistance Related to the Kumamoto Earthquake

- Status of donations and other contributions: approx. JPY 44.6 billion (as of January 31, 2026)
- Human support provided by volunteers, local governments, and private-sector organizations.
 - Kumamoto City Earthquake Volunteer Center: approx. 37,900 people (until November 2016)
 - Human support from local governments, private-sector organizations, and others:
Cumulative number of personnel dispatched and received: approx. 125,333 (as of end of March, 2025)

In addition, we received a large amount of relief supplies from across Japan, along with generous support and cooperation from many people both in Japan and abroad. This support became a tremendous driving force behind the city's recovery and reconstruction, and we extend our heartfelt gratitude to everyone involved.

—10 Years of Initiatives Following the Kumamoto Earthquake—

"From being supported to supporting each other"

At the ten-year milestone since the Kumamoto Earthquake, we will move forward with initiatives based on the following basic principles, with heartfelt remembrance of those who lost their lives, reflection on the path of recovery and reconstruction, and deep gratitude to all who have supported these efforts.

Basic Policy

Remembrance of the Victims and the Passing On of Their Memory

In addition to paying tribute to those who lost their lives, efforts will be made to prevent the fading of the disaster's memory and to renew disaster preparedness awareness across all of Kumamoto Prefecture, a joint memorial service will be held, co-hosted by the prefecture and municipalities within the prefecture.

Reflection on the Path of Recovery and Reconstruction

At the Contemporary Art Museum, Kumamoto, the Zoological and Botanical Gardens, and the Kumamoto Keirin Stadium, programs and events will be held looking back on the time of the Kumamoto Earthquake and the subsequent process of recovery and reconstruction.

Passing on Lessons for the Future

- Drills in cooperation with bodies such as the Disaster Prevention Subcommittee of the Kyushu Association of Mayors, as well as TKB48 evacuation shelter drills will be conducted.
- In each ward, disaster prevention events and similar initiatives will be held to enhance community disaster preparedness.

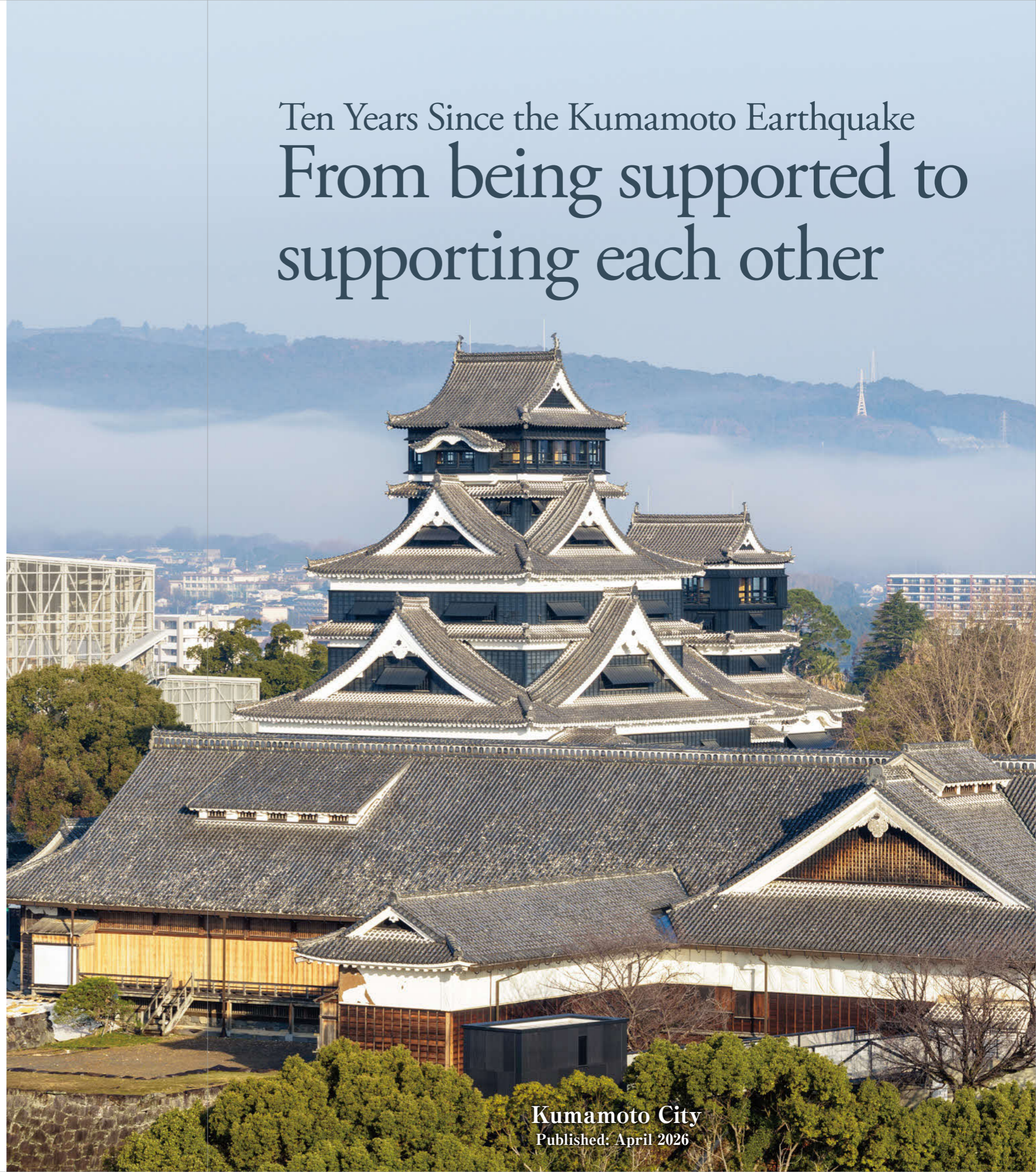
Gratitude for Support and Giving Back

The Restoration Concert and year-round events at Kumamoto Castle and its surrounding areas will be held to express gratitude for the various forms of support received and to foster disaster prevention awareness.



For details on each project, please visit the official Kumamoto City website.

Ten Years Since the Kumamoto Earthquake From being supported to supporting each other



The Path to Recovery and Reconstruction Since the 2016 Kumamoto Earthquake

Ten years have passed since the 2016 Kumamoto Earthquake (hereinafter referred to as the "Kumamoto Earthquake"). For all the mutual support among the citizens, and the warm assistance we received from people throughout Japan and around the world, we want to express our heartfelt gratitude. Through your support, we have been able to move steadily forward in our recovery.

2016

April 14 **Foreshock occurred (maximum seismic intensity of 7) / Establishment of the Kumamoto City Disaster Response Headquarters**

April 15 Issuance of Disaster Victim Certificates begins

April 16 **Main shock occurred (maximum seismic intensity of 7)**

Kumamoto City Hospital was damaged by the disaster, all patients were transferred or discharged and emergency outpatient services were suspended

April 22 Establishment of the Kumamoto City Disaster Volunteer Center

April 28 Partial resumption of outpatient services at Kumamoto City Hospital
Applications open for privately leased housing (temporary housing)

May 9 **Establishment of Kumamoto City Earthquake Recovery Headquarters and Formulation of "Kumamoto City Earthquake Recovery Basic Policy"**

For the victims of the disaster to regain secure and independent living as soon as possible, comprehensive support for rebuilding lives, including housing assistance and mental health care, were accelerated.

May 13 Decision made to relocate damaged Kumamoto City Hospital to Higashimachi Kita Housing (nationally owned land)

May 17 **Establishment of the General Consultation Desk**

In the end, seven housing complexes (449 units) in the Minami Ward, and two complexes (92 units) in the Higashi Ward were constructed.

June 2 All domestic flight connections resumed at Aso Kumamoto Airport

June 10 City Council held "First meeting of the Special Committee on the recovery and reconstruction following the Kumamoto Earthquake" (through March 8, 2017 — 8 sessions in total)

June 21 **Moving into construction-type emergency housing begins**

By the end, seven housing complexes (449 units) in the Minami Ward, and two complexes (92 units) in the Higashi Ward were constructed.

June 26 The Shirakawa Bridge reopens for traffic

September 15 **All evacuation centers in the city closed**

All 267 evacuation centers were closed sequentially, with the Kumamoto City Gymnasium being closed last.

September 29 All construction-type emergency housing completed (9 complexes), a total of 541 units

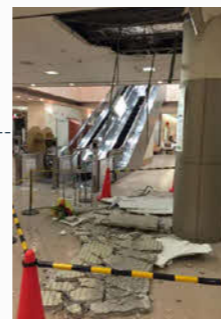
September 30 "Kumamoto City Hospital Basic Reconstruction Plan" is formulated

October 14 "Kumamoto Earthquake Recovery Plan" is formulated

October 15 Commemoration ceremony for victims of the Kumamoto Earthquake held

November 1 **"Community Mutual Support Center" established in every ward office**

Support provided for disaster victims, including monitoring of well-being, offering lifestyle/health consultations, and assistance for local communities.



2017

March 26 **Opening of the Kumamoto West Ring Road (Hanazono Section)**

During the Kumamoto Earthquake, existing roads were damaged and severed, causing severe traffic congestion. The opening of this section established a dual network function that contributed to both material transport and rescue operations.

April 5 Full-scale restoration works on the Kumamoto Castle Keeps begin

April **Establishment of a Community Development Center and Community Coordinators**

17 new Community Development Centers were established in each ward, staffed with dedicated Community Coordinators specializing in community development support. Coordinators work alongside local communities to address challenges during normal times and support the creation of systems enabling swift and flexible responses tailored to local conditions when disasters strike.

April **Establishment of the School District Disaster Prevention Liaison Committee and Evacuation Shelter Management Committee**

Each ward has assigned evacuation shelter management staff who collaborate with facility managers in local communities and schools to establish systems for opening and operating evacuation shelters during disasters.

April 16 First full-scale disaster response drill conducted after the assignment of Evacuation Shelter Coordinators

April 23 The "Kumamoto Recovery Soaring Festival" (Blue Impulse Aerial Display) is held

July 1 **Launch of the "Accompanied Housing Security Support Program"**
Households requiring assistance with housing reconstruction were provided with support, including help with move-in procedures.

December 13 Construction of disaster recovery public housing commences

2018

February 5 Reconstruction work on the Kumamoto City Hospital commences

March 8 The "Kumamoto Castle Restoration Basic Plan" is formulated

March Publication of the "2016 Kumamoto Earthquake: Kumamoto City Disaster Record" / Creation of the disaster prevention education supplementary reader Tsunagu

April 15 First national disaster response drill by a local government utilizing LINE

April 28 **Installation of Shachi Ornaments on the Kumamoto Castle Main Keep**

Two shachi ornaments installed on the roof of the restored Kumamoto Castle Main Keep.

October 22 All publicly funded demolitions of disaster-damaged houses completed

December **Total reopening of the Kumamoto City Zoological and Botanical Gardens and the Kumamoto City Museum**

The Kumamoto City Zoological and Botanical Gardens, which were damaged in the Kumamoto Earthquake, and the Kumamoto City Museum, which was closed long-term due to major renovations, were completely reopened, with the reopening seeing a large amount of visitors.

2019

January 31 Kumamoto City's first disaster recovery public housing completed

February - March Disaster restoration works for roads, bridges, rivers, water and sewer service facilities, as well as waterwork pipelines completed

March All emergency repairs on disaster-damaged housing was completed

April 1 **Designated as a "Disaster Relief Implementation City" under the Disaster Relief Act**

April 20 Disaster response drill with approx. 3400 local resident participants

July Completion of disaster-related community landslide prevention project in all 71 districts

August Completion of large-scale residential land seismic reinforcement project in all nine districts

August Commencement of residential land liquefaction prevention project in the Chikami District, Minami Ward

September 14 **Opening of the commercial complex "SAKURA MACHI Kumamoto" within the Sakuramachi District Redevelopment Site**

October 1 **Reconstruction of the Kumamoto City Hospital**

Rebuilt as a disaster-resilient hospital with enhanced seismic resistance and medical functions, serving as a key hub for protecting the lives of the citizens during the COVID-19 pandemic.

October 5 **Special public opening of Kumamoto Castle commences**

With the completion of the exterior restoration of the Kumamoto Castle Main Keep, a route leading to part of the plaza in front of the keep was opened to the public.

Damage and Recovery Status of the Kumamoto Earthquake *Overview of Kumamoto City

Casualties (as of end of January 2026)

Deaths: 90 (6 direct, 84 related)
Seriously injured: 772
(including 6 people with severe disabilities)

Evacuation centers / Number of evacuated

Evacuation centers: 267
Evacuated: 110,750 people

Damage to residences

*Number of disaster victim certificates issued (as of end of January 2026)
Complete destruction: 5764 cases
Major partial destruction: 8972 cases
Partial destruction: 38,964 cases
Partial damage: 82,985 cases
Total: 136,685 cases

Status of Residential Land Damage

Households affected by landslides (including areas within developed residential lots): Approx. 4300 households

• Households affected by liquefaction: Approx. 2900 households

Total: Approx. 7200 households

Water supply : Interrupted for up to approx. 326,000 households >>> **Water supply restored on April 30, 2016**

Electricity : Approx. 278,000 households without power >>> **Service restored on the afternoon of April 18, 2016**

Gas : Supply suspended to approx. 100,900 households >>> **Service restored as of April 30, 2016**



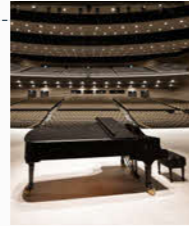
2019

October 6-13 **The Rugby World Cup 2019 is held in Kumamoto City**

November 30 - December 15 **The 2019 World Women's Handball Championship is held in Kumamoto City**
 Across both tournaments, Kumamoto welcomed a large number of visitors from around the world. The city recorded its highest-ever figures for tourist numbers and tourism spending, making this a valuable opportunity to showcase Kumamoto's recovery and reconstruction from the earthquake both in Japan and internationally.

November 1 Removal of Kumamoto City's first construction-type emergency housing begins
 November 22 All disaster recovery public housing was completed (8 districts, 326 units)

December 1 **Grand opening of the KUMAMOTO-JO HALL**
 As a project driving economic growth, the redevelopment of the Sakuramachi and Hanabata areas was promoted, and all facilities—including KUMAMOTO-JO HALL, which also functions as a storage warehouse—were opened.



2020

February 29 Disaster restoration works on school facilities completed
 March 17 Disaster restoration works on sewer pipelines completed

April **The "Downtown Revival Project" starts**
 A new system was launched to promote the rebuilding of deteriorating buildings, enhance disaster resilience in central business districts, and foster revitalization.

June 1 **Opening of the Kumamoto Castle Special Observation Route**
 Visitors can now safely view the damage to Kumamoto Castle and observe the ongoing restoration process up close.

July Onward Support provided to disaster-stricken areas affected by the heavy rain in July 2020



2021

March 20 **Development of the Shirakawaguchi Station Square completed**

June 28 **Opening of the Interior of Kumamoto Castle's Main Keep to the Public**
 With the restoration of the main keep, the exhibits have been renewed, and visitors can now view displays that make use of scale models and visual presentations such as projection mapping.

November 13 **Completion of the Hanabata Hiroba Square**
 In addition to improving everyday convenience for residents and enhancing walkability for visitors, open space functions were also secured for use during disasters, contributing to the development of a disaster-resilient city center.



December 19 **0 households living in emergency temporary housing**
 As a result of providing housing reconstruction support tailored to each affected individual's circumstances, the number of households living in emergency temporary housing had fallen to zero by the end of December.

2022

January Completion of the expanded residential land seismic reinforcement program in all 156 districts

March Onward **The 38th National Urban Greening Fair Kumamoto Fair is held**

April 23/24 **The 4th Asia-Pacific Water Summit is held**
 The summit is held at the Hanabata Hiroba Plaza and KUMAMOTO-JO HALL, promoting the appeal of Kumamoto City as the "City of Trees, and City of Water."

October 1 **Enforcement of the Kumamoto City Basic Disaster Prevention Ordinance**
 Based on the lessons learned and challenges identified from the Kumamoto Earthquake, the Kumamoto City Basic Disaster Prevention Ordinance was enacted to promote initiatives aimed at strengthening community disaster preparedness, and April 16th was designated as annual "Kumamoto Earthquake Day."



2023

March The "Kumamoto Castle Restoration Plan" was revised, and the planned completion period for the restoration was reset to FY2052.

April 16 **First public awareness event for "Kumamoto Earthquake Day" is held**
 Events such as the "Talk Session between the Mayor and the Youth," the "Disaster Recovery Panel Exhibition," and the "Disaster Prevention Hero Enrollment Exam," which taught disaster preparedness through play, were held, attracting a total of approx. 3,000 visitors.

September 1 Restoration and reopening of the Western School Teachers' Residence (Janes' Residence)



2024

January Onward **Implementation of support for the Noto Peninsula Earthquake disaster area**

March 100% completion of the establishment of school-district disaster prevention liaison councils

March **Introduction and implementation of the Kumamoto App**
 The smartphone app, "Kumamoto App," was introduced to increase participation in community and volunteer activities during normal times, and to support evacuation shelter management and the monitoring of evacuation conditions during disasters.

August **Formulation of the basic concept for the development of the new Kumamoto City Hall**
 Development of a new city hall progresses as a core facility to protect the lives and property of all citizens from all types of disasters.



2025

January **"ONE KYUSHU Project" established during the Kyushu Association of Mayors meeting**

The Association begins to examine disaster prevention and mitigation measures for the entire Kyushu region, including the establishment of a mutual support system, in preparation for a potential Nankai Trough earthquake and other large-scale disasters.

February Completion of the residential land liquefaction prevention project in Chikami District

August **Response to the August 2025 heavy rain**
 As a city designated for disaster relief operations, the Disaster Relief Act was applied and the city responded swiftly and proactively.

October 19 **Opening of the Kumamoto West Ring Road (Ikenoue Section)**
 With the opening of this section, additional route redundancy was secured, forming a more disaster-resilient road network.



2026

January 27 **Grand opening of the Kumamoto Keirin Stadium**

The reconstruction of the Kumamoto Keirin Stadium, which was heavily affected by the Kumamoto Earthquake, was completed, and the grand opening was held on January 27.

The newly developed on-site parking area can be used as a place for evacuation in vehicles in the event of a large-scale disaster, and a disaster emergency supply storage facility has been established within the on-site service center, allowing the site to also function as a regional disaster prevention hub.



Disaster Relief

Improving Welfare Support and the Revitalization of Local Communities

- Support previously provided through the “Community Mutual Support Center,” established as a dedicated organization for disaster victim assistance, was transitioned from FY2022 onward into the framework of existing organizations, ensuring the continued availability of systems to respond to consultations from affected residents.
- We continue to enhance welfare support—such as strengthening consultation services for households facing financial hardship—and to promote the revitalization of local communities through initiatives including community exchange events, so that people can continue to live healthy lives in their new living environments without experiencing social isolation.



Mental Health Care for Children

- The survey of the number of children and students requiring regular counseling includes those affected by the Kumamoto Earthquake, and we will continue to provide mental health care for children and students.

Community Development for Disaster Prevention and Mitigation

Further Enhancement of Community Disaster Preparedness

- We will conduct citywide drills in cooperation with citizens and local communities, facility managers, disaster-related organizations, and private-sector entities. By systematically implementing drills with different phases each fiscal year, we aim to enhance our disaster response capabilities.
- We will continue to promote initiatives in collaboration with local communities, including school-district disaster prevention liaison councils and evacuation shelter management committees, and will also work on developing human resources such as community disaster prevention leaders.



Improvement of Evacuation Environment

- As part of efforts to ensure privacy and improve sleeping conditions, we will rapidly expand stockpiles of partitions and simple beds, while also promoting the use of food trucks. These measures will be utilized not only during disasters, such as in citywide earthquake response drills, but also in normal times, to raise awareness among local residents through everyday use.



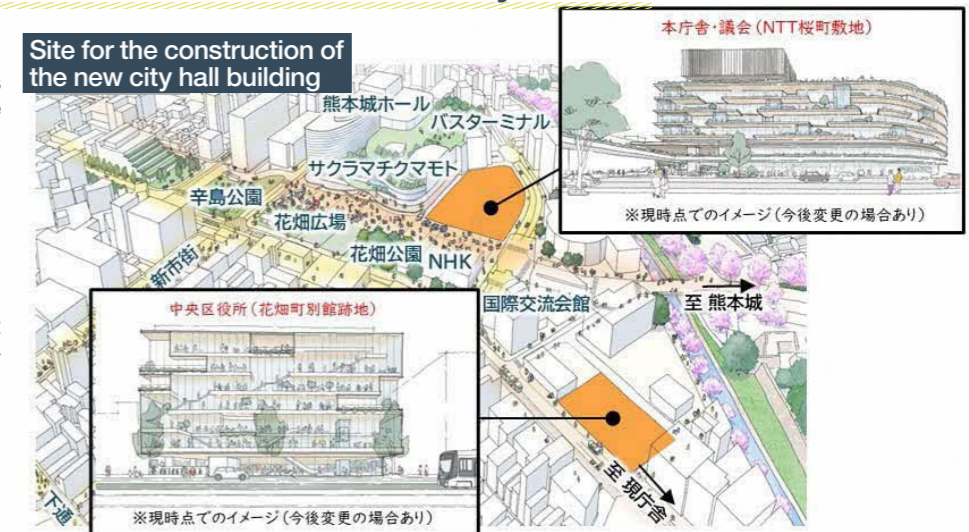
Improvement of Infrastructure

- To ensure the stable provision of basic water and sewerage services even in the event of a large-scale earthquake, we will continue to strengthen the seismic resistance of facilities and pipelines.
- We are realizing planned measures against the gradual deterioration of water and sewer pipelines and approx. 3000 bridges.



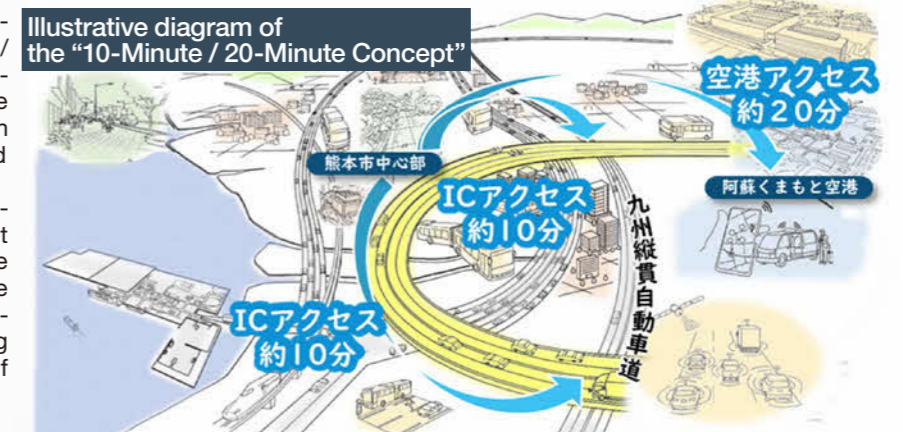
Development of a Disaster-Resilient and Vibrant City Center

- In addition to protecting the lives and property of our citizens from all types of disasters, we will proceed with the construction of the new city hall and related facilities to further enhance public services.
- We will promote the rebuilding of deteriorating buildings to enhance disaster resilience in the city center, while advancing urban development that contributes to vibrancy and regional and economic exchange across the entire central area through the effective use of the current city hall site and surrounding community development.



Development of High-Standard Roads That Function During Disasters

- High-standard roads such as the Kumamoto West Ring Road and the “10 / 20 Minute Concept” serve as a double-network during disasters, and are therefore expected to facilitate smooth rescue and relief operations and enable rapid recovery. To further strengthen the double-network function of the Kumamoto West Ring Road, which has opened in the Hanazono and Ikenoue sections, we will work toward the opening of the Sunahara section, while also advancing efforts toward the early realization of the “10 / 20 Minute Concept.”



Preservation and Inheritance of the Records, Memories, and Lessons of the Kumamoto Earthquake

Promotion of Initiatives to Enhance Disaster Awareness

- We will continue to implement disaster awareness-raising events aimed at enhancing citizens' disaster preparedness, along with initiatives carried out in cooperation with local communities in each ward and ongoing disaster prevention education.

Establishment of Support and Cooperation Frameworks with Other Cities

- We will strengthen cooperation with the national government, the prefecture, other cities, and relevant organizations to build an effective and efficient disaster response framework.
- We will continue to apply the lessons learned from the Kumamoto Earthquake to support other disaster-affected municipalities, and through this support, we will also enhance the disaster response capabilities of Kumamoto City staff.
- To prepare for potential large-scale disasters, including a Nankai Trough earthquake, and efforts are underway to strengthen disaster prevention and mitigation measures and build mutual support systems, not only in Kumamoto Prefecture but also throughout Kyushu and across Japan.