

Let's Dispose of Trash Properly!

This is an explanation of the trash disposal rules in the Ueki Area of Kumamoto City.

For disposal instructions about types of trash that are not listed here, please contact the Kita Ward Office's Environmental Division of the Public Assistance Section (096-272-1112).

3 Principles of Trash Disposal

- 1 The Correct Type of Trash
- 2 On the Correct Day
- 3 In the Correct Location

Basic Rules

- Dispose of burnable (except branches and leaves) and non-burnable waste in their respective designated trash bags.
- Anything that doesn't fit in a designated trash bag is over-sized trash and requires a fee.
- Dispose of trash by 8:30 AM on the designated collection day.
- Please confirm with the Ueki Area Garbage Collection Calendar.

Types of Trash

- ① Burnable
- ② Non-Burnable
- ③ Over-sized Trash
- ④ Recyclable Trash

Trash Pickup Location

- ① Burnable Put the trash out in the same place as burnable trash
- ② Non-Burnable (Landfill) . . . Put the trash out in the same place as burnable trash
- ③ Over-Sized Trash Put the trash out in the same place as burnable trash
- ④ Recyclable Trash . . . Put the trash out in your area's designated location (check with your local community council)

Types of Designated Trash Bags



Burnable trash



Non-Burnable Trash



Garbage Sorting App

The Garbage Sorting App, which also has features that let you know the collection days for trash, is now available to download. You can download it on your phone or tablet by scanning this QR Code.



How to Separate and Dispose of Garbage (For recyclable garbage, please flip this over)

Designated

Please use designated trash bags (except for over-sized and recyclable trash).

Clear

Please use a clear trash bag up to 45L.

Burnable Twice a Week



Designated



Food Waste



Paper Scraps



Plastics



Textiles



Leather Goods



Rubber



Wood



Plants, Flowers, Grass



Drying agents, refrigerants, medicine



Fallen leaves, pruned branches

Clear

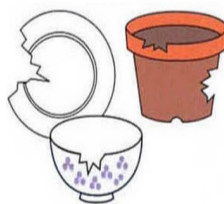
Landfill Waste Once a Month



Designated



Glass



China, earthenware, pottery



Concrete blocks



Mirrors

○Please wrap up sharp objects (broken glass, etc.) in paper and mark as dangerous (危険).

○Things that cannot fit in the designated trash bags are **over-sized trash**

Over-Sized Trash Once a Month



Wooden Furniture



Futons, Carpets, etc. (tie them up before putting them out)



Bicycles



Desks



Gas Stoves



Mattresses



Microwaves

○Trash that doesn't fit in designated bags.

○Please mark your bicycle to let us know that it is not in use.

○Please cancel your security and anti-theft registries before you throw out your bicycle.

○Microwaves, futons, blankets, carpets, and other similar items should be tied up with string before being put out.

Waste the City Does NOT Collect

Don't put out at the regular trash disposal area

Large quantities of garbage, e.g. after moving or spring cleaning, tires, fire extinguishers, kerosene, business garbage, TVs, refrigerators, air conditioners, washing machines, personal computers, etc.

➡ Please consult with an expert or the shop where you purchased the product



- For Consultations Regarding Garbage Kumamoto City Kita Ward Office's Public Assistance Section (096-272-1112)
- You Can Get Advice in Foreign Languages Here Kumamoto Consultation and Support Plaza for Foreign Residents (096-359-4995)

How to Separate and Dispose of Recyclable Garbage

Please Dispose of Them at the Locally Designated Place and Time. (2 Times per Month)

Types of Cans



Do not crush (don't change the shape)



Push attached lids inward



- Wash and drain the can, but don't put anything inside it.
- Please put in any aluminum or steel cans.
- For rusted or smashed cans, refer to the Metals Section.
- For fryer pots and pans, please wash them and refer to the Metals Section.

Reusable Bottles

1,8 Liter Bottles
Beer Bottles



1,8 Liter Bottles



Beer Bottles

Remove the cap



Metal cap
(Metals Section)

Plastic cap
(Other Plastics Section)



- Wash and drain the bottle, and don't put anything inside it.
- Only 1,8 liter and beer bottles.
- For bottles of oil, wash them and refer to the Types of Bottles Section.
- For broken bottles, refer to the Non-Burnable Section.

Types of Bottles



Metal cap

Plastic cap



- Wash and drain the bottle, and don't put anything inside it.
- For broken bottles, refer to the Non-Burnable Section.
- For pumps and spray nozzles, refer to the Other Plastics Section

PET Bottles



PET

Clear PET Bottles



Caps & Labels
(Other Plastics)



Wash



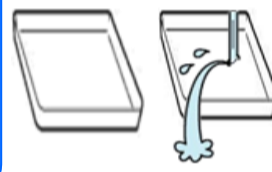
Flatten and Throw Away



White Trays



PS



- Non-colored (only white)
- Wash, drain, and throw it away

Other Plastics and Containers

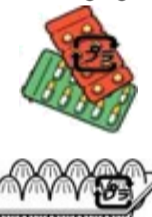


With This Mark



Styrofoam Containers
(Break it up if it's too large)

Medicine Packaging



Food Containers and Wrappers



Remove pumps and spray nozzles



Remove caps and labels



- Use up the contents, then take off the cap and wash, drain, and throw away
- Throw it away after taking off the cap and label

Metals and Small Appliances

Anything that doesn't fit in the collection container is over-sized trash

Metal Caps



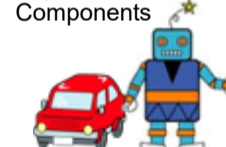
Other Metals



Small Home Appliances



Toys with Metal Components



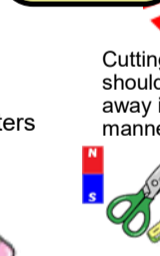
Empty Lighters



Digital Thermometers



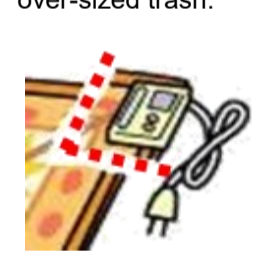
Make a hole in any used-up spray cans before throwing them away



Cloth and vinyl pieces are burnable trash



Cut off the switch and cord from electric carpets. The carpet portion is over-sized trash.



Newspapers & Flyers

Not Collected on Rainy Days



- Do not mix newspapers and flyers with other papers
- Tie up in a cross-like fashion with string or twine

Cardboard

Not Collected on Rainy Days



- Fold them up to be 1m by 1m or less.
- Tie up in a cross-like fashion with string or twine.

Books and Other Paper

Not Collected on Rainy Days



- Tie up in a cross-like fashion with string or twine

Paper Cartons



Not Collected on Rainy Days

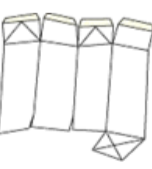


Wash

Dry Off



Cut Open



The cap is Other Plastics



Cut It Out



Tie with string or twine



- Paper containers for drinks that



Have this mark.

- Cartons with aluminum foil coating on the inside are Burnable Trash

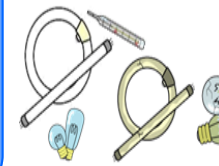
Old Cloth

Not Collected on Rainy Days



- Clothes, sheets, towels, etc. (underwear, socks, curtains, blankets, and cotton things are burnable garbage).
- Wash and throw away.
- Tie up in a cross-like fashion with string or twine.

Fluorescent Lights, Lightbulbs, and Mercury Thermometers



- Please dispose of them safely even if they aren't broken

Dry Batteries

